



Calretinin (ABT91R) Rabbit mAb (Ready to Use)

Catalog No	YP-rAb-18179
Isotype	IgG
Reactivity	Human
Applications	IHC
Gene Name	CALB2
Protein Name	Calretinin (CR) (29 kDa calbindin)
Purification Process	Protein A
Specificity	This antibody detects endogenous levels of Calretinin
Formulation	The prediluted ready-to-use antibody is diluted in phosphate buffer saline containing stabilizing protein and 0.05% Proclin 300
Source	Monoclonal, Rabbit,IgG
Dilution	Ready to use for IHC Note: For IHC, we suggest antigen retrieval with TE buffer pH 9.0
Concentration	0.5 mg/ml
Purity	≥90%
Storage Stability	2° C to 8° C/1 year,Ship by ice bag
Synonyms	29 kDa calbindin ; CAB 29 ; CAB29 ; CAL 2 ; CAL2 ; CALB 2 ; CALB2 ; CALB2_HUMAN ; Calbindin 2 29 kDa ; Calbindin 2 ; Calbindin D29K ; Calbindin2 ; Calretinin ; CR
Observed Band	
Calculated Molecular Weight	
Cell Pathway	Cytoplasmic, Nuclear
Tissue Specificity	Brain.
Function	Calretinin is a calcium-binding protein which is abundant in auditory neurons.,online information:Calbindin entry,similarity:Belongs to the calbindin family.,similarity:Contains 6 EF-hand domains.,tissue specificity:Brain.,
Background	This gene encodes an intracellular calcium-binding protein belonging to the troponin C superfamily. Members of this protein family have six EF-hand domains which bind calcium. This protein plays a role in diverse cellular functions, including message targeting and intracellular calcium buffering. It also functions as a modulator of neuronal excitability, and is a diagnostic marker for some human diseases, including Hirschsprung disease and some cancers. Alternative splicing





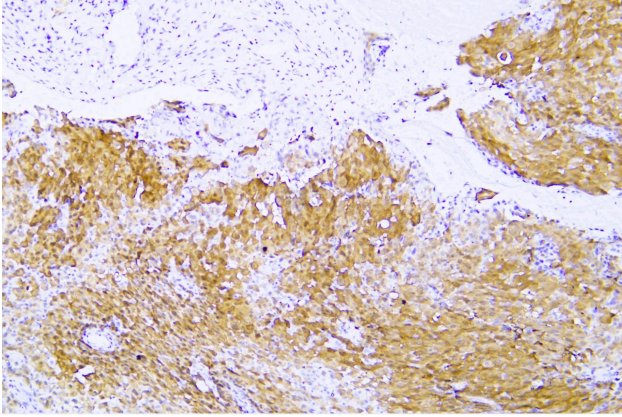
results in multiple transcript variants. [provided by RefSeq, Jun 2010],

matters needing attention

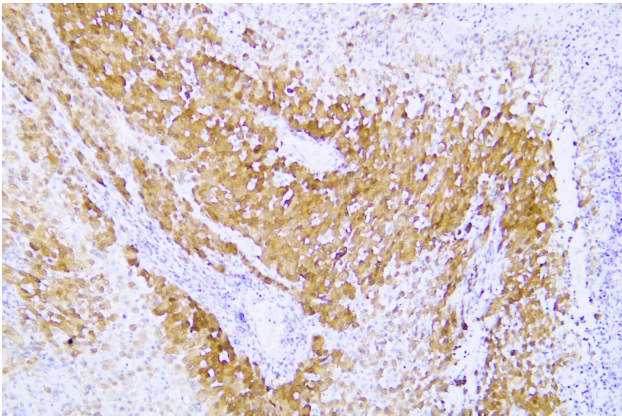
Avoid repeated freezing and thawing!

Usage suggestions

This product can be used in immunological reaction related experiments. For more information, please consult technical personnel.



Human mesothelioma was stained with anti-Calretinin (ABT91R) rabbit mAb



Human mesothelioma was stained with anti-Calretinin (ABT91R) rabbit mAb

