



Somatostatin (ABT81R) Rabbit mAb (Ready to Use)

Catalog No	YP-rAb-18164
Isotype	IgG
Reactivity	Human,Mouse,Rat
Applications	IHC
Gene Name	SST
Protein Name	Somatostatin (Growth hormone release-inhibiting factor) [Cleaved into: Somatostatin-28; Somatostatin-14]
Purification Process	Protein A
Specificity	This antibody detects endogenous levels of Somatostatin
Formulation	The prediluted ready-to-use antibody is diluted in phosphate buffer saline containing stabilizing protein and 0.05% Proclin 300
Source	Monoclonal, Rabbit,IgG
Dilution	Ready to use for IHC Note: For IHC, we suggest antigen retrieval with TE buffer pH 9.0
Concentration	0.5 mg/ml
Purity	≥90%
Storage Stability	2° C to 8° C/1 year,Ship by ice bag
Synonyms	Growth hormone release inhibiting factor ; Growth hormone release-inhibiting factor ; Prepro somatostatin ; SMS_HUMAN ; SMST ; Somatostatin 14 ; Somatostatin 28 ; Somatostatin-14 ; SST
Observed Band	
Calculated Molecular Weight	
Cell Pathway	Cytoplasmic
Tissue Specificity	Fetal brain,
Function	Somatostatin inhibits the release of somatotropin.,online information:Somatostatin entry,pharmaceutical:A synthetic analog known as octreotide or SMS 201-995 is available under the name Sandostatin (Novartis). It is used for the treatment of a variety of disorders including acromegaly and the symptomatic treatment of carcinoid tumors and vasoactive intestinal peptide tumors.,similarity:Belongs to the somatostatin family.,
Background	The hormone somatostatin has active 14 aa and 28 aa forms that are produced by alternate cleavage of the single preproprotein encoded by this gene. Somatostatin is expressed throughout the body and inhibits the release of numerous secondary





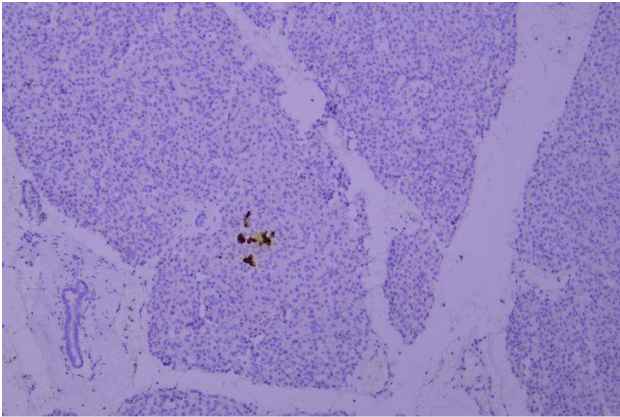
hormones by binding to high-affinity G-protein-coupled somatostatin receptors. This hormone is an important regulator of the endocrine system through its interactions with pituitary growth hormone, thyroid stimulating hormone, and most hormones of the gastrointestinal tract. Somatostatin also affects rates of neurotransmission in the central nervous system and proliferation of both normal and tumorigenic cells. [provided by RefSeq, Jul 2008],

matters needing attention

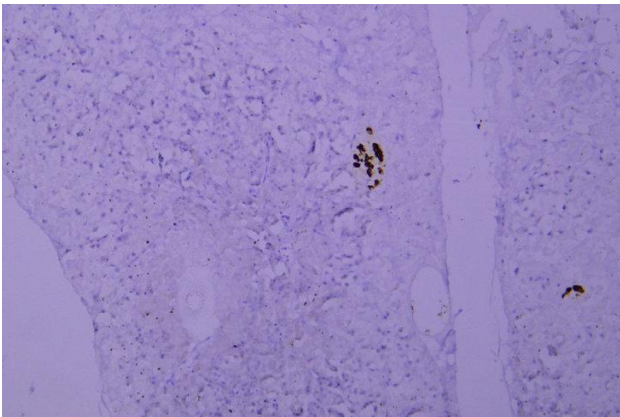
Avoid repeated freezing and thawing!

Usage suggestions

This product can be used in immunological reaction related experiments. For more information, please consult technical personnel.



Immunohistochemical analysis of paraffin-embedded human Pancreas-1. 1, Antibody was incubated at 4° overnight. 2, Citrate buffer of pH6.0 was used for antigen retrieval. 3, Secondary antibody was diluted at 1:200 (room temperature, 30min).



Immunohistochemical analysis of paraffin-embedded human Pancreas. 1, Antibody was incubated at 4° overnight. 2, Citrate buffer of pH6.0 was used for antigen retrieval. 3, Secondary antibody was diluted at 1:200 (room temperature, 30min).

