



# S100A6 (ABT179R) Rabbit mAb (Ready to Use)

<b>Catalog No</b>	YP-rAb-18163
<b>Isotype</b>	IgG
<b>Reactivity</b>	Human
<b>Applications</b>	IHC
<b>Gene Name</b>	S100A6 CACY
<b>Protein Name</b>	S100A6
<b>Purification Process</b>	Protein A
<b>Specificity</b>	This antibody detects endogenous levels of S100A6
<b>Formulation</b>	The prediluted ready-to-use antibody is diluted in phosphate buffer saline containing stabilizing protein and 0.05% Proclin 300
<b>Source</b>	Monoclonal, Rabbit,IgG
<b>Dilution</b>	Ready to use for IHC Note: For IHC, we suggest antigen retrieval with TE buffer pH 9.0
<b>Concentration</b>	0.5 mg/ml
<b>Purity</b>	≥90%
<b>Storage Stability</b>	2° C to 8° C/1 year,Ship by ice bag
<b>Synonyms</b>	Protein S100-A6 ; Calcyclin ; Growth factor-inducible protein 2A9 ; MLN 4 ; Prolactin receptor-associated protein ; PRA ; S100 calcium-binding protein A6
<b>Observed Band</b>	
<b>Calculated Molecular Weight</b>	
<b>Cell Pathway</b>	Nuclear, Cytoplasmic
<b>Tissue Specificity</b>	Brain,Fibroblast,Placenta,Platelet,
<b>Function</b>	induction:Preferentially expressed when quiescent fibroblasts are stimulated to proliferate. It is inducible by growth factors and overexpressed in acute myeloid leukemias.,miscellaneous:This protein co-purified with the prolactin receptor.,PTM:The N-terminus is blocked.,similarity:Belongs to the S-100 family.,similarity:Contains 2 EF-hand domains.,subunit:Homodimer, antiparallel. Interacts with SUGT1.,
<b>Background</b>	S100 calcium binding protein A6(S100A6) Homo sapiens The protein encoded by this gene is a member of the S100 family of proteins containing 2 EF-hand calcium-binding motifs. S100 proteins are localized in the cytoplasm and/or nucleus of a wide range of cells, and involved in the regulation of a number of cellular processes such as cell cycle progression and differentiation. S100 genes





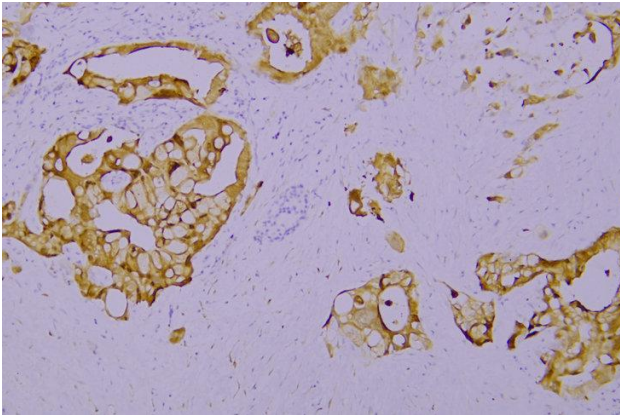
include at least 13 members which are located as a cluster on chromosome 1q21. This protein may function in stimulation of Ca<sup>2+</sup>-dependent insulin release, stimulation of prolactin secretion, and exocytosis. Chromosomal rearrangements and altered expression of this gene have been implicated in melanoma. [provided by RefSeq, Jul 2008],

**matters needing attention**

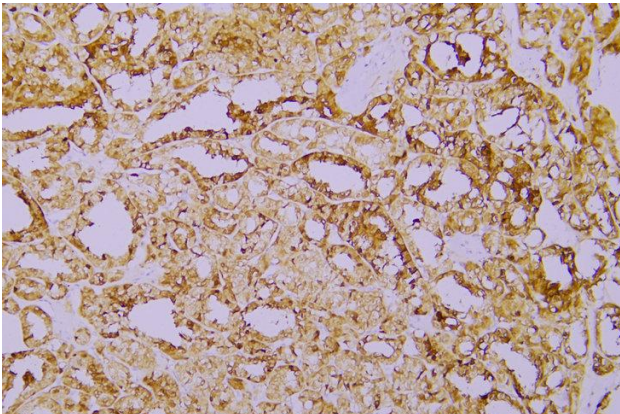
Avoid repeated freezing and thawing!

**Usage suggestions**

This product can be used in immunological reaction related experiments. For more information, please consult technical personnel.



Immunohistochemical analysis of paraffin-embedded human Pancreatic carcinoma. 1, Antibody was incubated at 4° overnight. 2, TRIS-EDTA of pH8.0 was used for antigen retrieval. 3, Secondary antibody was diluted at 1:200(room temperature, 30min).



Immunohistochemical analysis of paraffin-embedded human Papillary thyroid carcinoma. 1, Antibody was incubated at 4° overnight. 2, TRIS-EDTA of pH8.0 was used for antigen retrieval. 3, Secondary antibody was diluted at 1:200(room temperature, 30min).

