



S100A4 (ABT178R) Rabbit mAb (Ready to Use)

Catalog No	YP-rAb-18162
Isotype	IgG
Reactivity	Human
Applications	IHC
Gene Name	S100A4
Protein Name	Protein S100-A4 (Calvasculin) (Metastasin) (Placental calcium-binding protein) (Protein Mts1) (S100 calcium-binding protein A4)
Purification Process	Protein A
Specificity	This antibody detects endogenous levels of S100A4
Formulation	The prediluted ready-to-use antibody is diluted in phosphate buffer saline containing stabilizing protein and 0.05% Proclin 300
Source	Monoclonal, Rabbit,IgG
Dilution	Ready to use for IHC Note: For IHC, we suggest antigen retrieval with TE buffer pH 9.0
Concentration	0.5 mg/ml
Purity	≥90%
Storage Stability	2° C to 8° C/1 year,Ship by ice bag
Synonyms	18A2 ; 42A ; calcium Placental protein ; Calvasculin ; CAPL ; Fibroblast specific protein 1 ; FSP1 ; Fibroblast specific protein 1 ; Fibroblast specific protein ; FSP1 ; Leukemia multidrug resistance associated protein ; Malignant transformation suppression 1 ; MTS1 ; Malignant transformation suppression 1 ; Metastasin ; MTS1 ; OTTHUMP00000015467 ; OTTHUMP00000015468 ; P9KA ; PEL98 ; Placental calcium-binding protein ; Protein Mts1 ; Protein S100 A4 ; Protein S100-A4 ; S100 calcium binding protein A4 ; calcium protein, calvasculin, metastasin, murine placental homolog ; S100 calcium binding protein A4 ; S100 calcium-binding protein A4 ; S100a4 ; S10A4_HUMAN
Observed Band	
Calculated Molecular Weight	
Cell Pathway	Nuclear, Cytoplasmic
Tissue Specificity	Ubiquitously expressed.





Function

similarity:Belongs to the S-100 family.,similarity:Contains 2 EF-hand domains.,subunit:Homodimer. Interacts with PPFIBP1 in a calcium-dependent mode.,tissue specificity:Ubiquitously expressed.,

Background

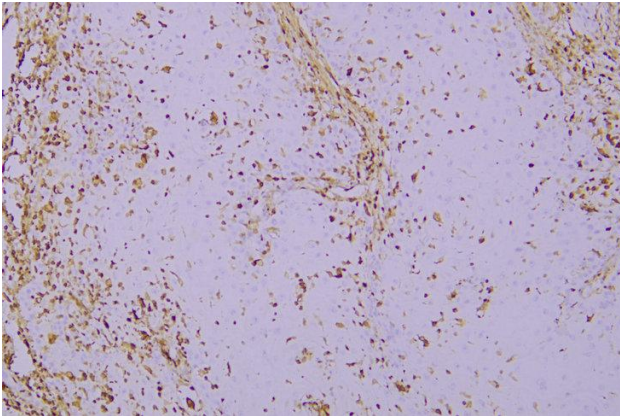
S100 calcium binding protein A4(S100A4) Homo sapiens The protein encoded by this gene is a member of the S100 family of proteins containing 2 EF-hand calcium-binding motifs. S100 proteins are localized in the cytoplasm and/or nucleus of a wide range of cells, and involved in the regulation of a number of cellular processes such as cell cycle progression and differentiation. S100 genes include at least 13 members which are located as a cluster on chromosome 1q21. This protein may function in motility, invasion, and tubulin polymerization. Chromosomal rearrangements and altered expression of this gene have been implicated in tumor metastasis. Multiple alternatively spliced variants, encoding the same protein, have been identified. [provided by RefSeq, Jul 2008],

matters needing attention

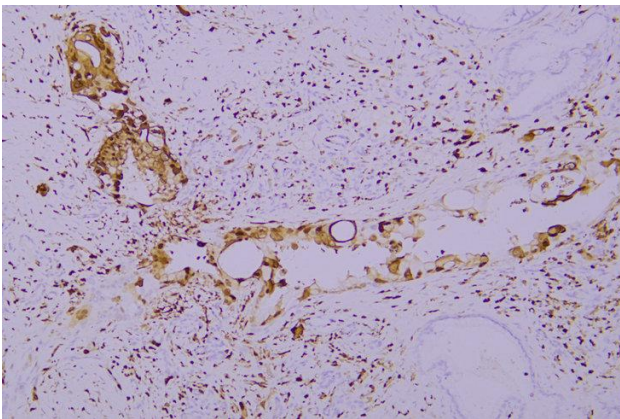
Avoid repeated freezing and thawing!

Usage suggestions

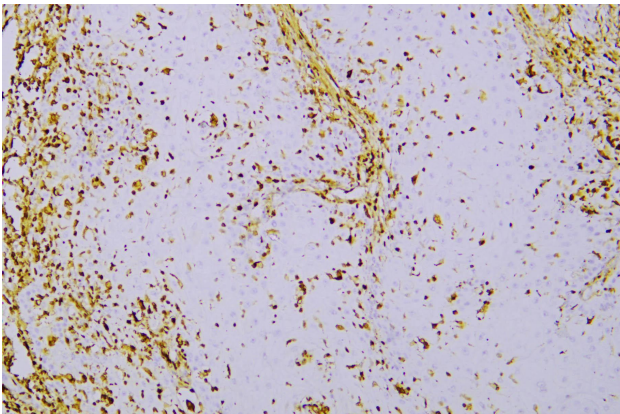
This product can be used in immunological reaction related experiments. For more information, please consult technical personnel.



Immunohistochemical analysis of paraffin-embedded human Cutaneous squamous carcinoma. 1, Antibody was incubated at 4° overnight. 2, Citrate buffer of pH6.0 was used for antigen retrieval. 3,Secondary antibody was diluted at 1:200(room temperature, 30min).



Immunohistochemical analysis of paraffin-embedded human Pancreatic carcinoma. 1, Antibody was incubated at 4° overnight. 2, Citrate buffer of pH6.0 was used for antigen retrieval. 3,Secondary antibody was diluted at 1:200(room temperature, 30min).



Human skin squamous cell carcinoma was stained with anti-S100A4 (ABT178R) rabbit mAb

杭州臻优品生物科技有限公司

热销产品:

蛋白、一抗、抗体对、ELISA试剂盒、生化试剂盒
CCK8试剂盒、QPCR检测试剂盒

检测服务:

ELISA检测及定制服务 | 生化检测 | PCR、QPCR检测 | WB检测
ICO-IP检测 | 切片 | 染色 | 免疫组化 | 免疫荧光 | 透射电镜全套
| 宏基因组、转录组、基因组、蛋白组、代谢组测序



关注官网



关注客服