



# Prostatic Acid Phosphatase (PAP) (ABT66R) Rabbit mAb (Ready to Use)

<b>Catalog No</b>	YP-rAb-18161
<b>Isotype</b>	IgG
<b>Reactivity</b>	Human,Mouse,Rat
<b>Applications</b>	IHC
<b>Gene Name</b>	ACPP
<b>Protein Name</b>	Prostatic Acid Phosphatase(PSAP)
<b>Purification Process</b>	Protein A
<b>Specificity</b>	This antibody detects endogenous levels of PSAP
<b>Formulation</b>	The prediluted ready-to-use antibody is diluted in phosphate buffer saline containing stabilizing protein and 0.05% Proclin 300
<b>Source</b>	Monoclonal, Rabbit,IgG
<b>Dilution</b>	Ready to use for IHC Note: For IHC, we suggest antigen retrieval with TE buffer pH 9.0
<b>Concentration</b>	0.5 mg/ml
<b>Purity</b>	≥90%
<b>Storage Stability</b>	2° C to 8° C/1 year,Ship by ice bag
<b>Synonyms</b>	5' NT ; 5' nucleotidase ; 5'-NT ; 5'-nucleotidase ; Acid phosphatase prostate ; ACP 3 ; ACP3 ; acpP ; Ecto 5' nucleotidase ; Ecto-5'-nucleotidase ; PAP ; PPAP_HUMAN ; Prostatic acid phosphatase ; Prostatic acid phosphotase ; Thiamine monophosphatase ; TMPase
<b>Observed Band</b>	
<b>Calculated Molecular Weight</b>	
<b>Cell Pathway</b>	[Isoform 1]: Secreted . ; [Isoform 2]: Cell membrane ; Single-pass type I membrane protein . Lysosome membrane ; Single-pass type I membrane protein . Nucleus . Cytoplasm, cytosol . Appears to shuttle between the cell membrane and intracellular vesicles. Colocalizes with FLOT1 at cell membrane and in intracellular vesicles (PubMed:17638863). Colocalizes with LAMP2 on the lysosome membrane (PubMed:17897319). .
<b>Tissue Specificity</b>	Highly expressed in the prostate, restricted to glandular and ductal epithelial cells. Also expressed in bladder, kidney, pancreas, lung, cervix, testis and ovary. Weak expression in a subset of pancreatic islet cells, squamous epithelia, the pilosebaceous unit, colonic neuroendocrine cells and skin adnexal structures. Low expression in prostate carcinoma cells and tissues. ; [Isoform 2]: Widely

## 杭州臻优品生物科技有限公司

### 热销产品:

蛋白、一抗、抗体对、ELISA试剂盒、生化试剂盒  
CCK8试剂盒、QPCR检测试剂盒

### 检测服务:

ELISA检测及定制服务 | 生化检测 | PCR、QPCR检测 | WB检测  
ICO-IP检测 | 切片 | 染色 | 免疫组化 | 免疫荧光 | 透射电镜全套  
| 宏基因组、转录组、基因组、蛋白组、代谢组测序



关注官网



关注客服



expressed. Expressed in the sarcolemma of skeletal muscle.

**Function**

Catalytic activity:A phosphate monoester + H(2)O = an alcohol + phosphate.,similarity:Belongs to the histidine acid phosphatase family.,subcellular location:Predominantly localized in the plasma membrane but also detected in intracellular vesicles.,subunit:Homodimer.,

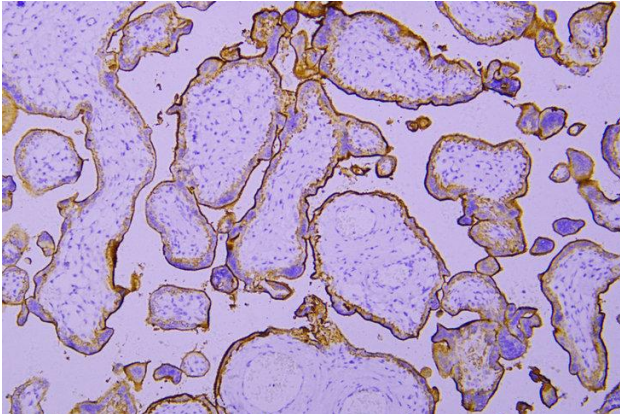
**Background**

**matters needing attention**

Avoid repeated freezing and thawing!

**Usage suggestions**

This product can be used in immunological reaction related experiments. For more information, please consult technical personnel.



Immunohistochemical analysis of paraffin-embedded human Placenta. 1, Antibody was incubated at 4° overnight. 2, TRIS-EDTA of pH8.0 was used for antigen retrieval. 3,Secondary antibody was diluted at 1:200(room temperature, 30min).

