



Neuron-Specific Enolase(NSE) (ABT47R) Rabbit mAb (Ready to Use)

Catalog No	YP-rAb-18160
Isotype	IgG
Reactivity	Human,Mouse,Rat
Applications	IHC
Gene Name	ENO2
Protein Name	Neuron-Specific Enolase(NSE)
Purification Process	Protein A
Specificity	This antibody detects endogenous levels of Enolase
Formulation	The prediluted ready-to-use antibody is diluted in phosphate buffer saline containing stabilizing protein and 0.05% Proclin 300
Source	Monoclonal, Rabbit,IgG
Dilution	Ready to use for IHC Note: For IHC, we suggest antigen retrieval with TE buffer pH 9.0
Concentration	0.5 mg/ml
Purity	≥90%
Storage Stability	2° C to 8° C/1 year,Ship by ice bag
Synonyms	2 phospho D glyceRate hydrolyase ; 2-phospho-D-glyceRate hydro-lyase ; Eno 2 ; ENO2 ; ENOG ; ENOG_HUMAN ; Enolase 2 ; gamma, neuronal ; Enolase 2 ; Enolase 2 gamma neuronal ; Enolase2 ; Epididymis secretory protein Li 279 ; Gamma enolase ; Gamma-enolase ; HEL S 279 ; Neural enolase ; Neuron specific enolase ; Neuron specific gamma enolase ; Neuron-specific enolase ; neuronal enriched enolase ; Neurone specific enolase ; NSE
Observed Band	
Calculated Molecular Weight	
Cell Pathway	Cytoplasmic
Tissue Specificity	The alpha/alpha homodimer is expressed in embryo and in most adult tissues. The alpha/beta heterodimer and the beta/beta homodimer are found in striated muscle, and the alpha/gamma heterodimer and the gamma/gamma homodimer in neurons.
Function	Catalytic activity:2-phospho-D-glycerate = phosphoenolpyruvate +





H(2)O.,cofactor:Magnesium. Required for catalysis and for stabilizing the dimer.,developmental stage:During ontogenesis, there is a transition from the alpha/alpha homodimer to the alpha/beta heterodimer in striated muscle cells, and to the alpha/gamma heterodimer in nerve cells.,Function:Has neurotrophic and neuroprotective properties on a broad spectrum of central nervous system (CNS) neurons. Binds, in a calcium-dependent manner, to cultured neocortical neurons and promotes cell survival.,induction:Levels of ENO2 increase dramatically in cardiovascular accidents, cerebral trauma, brain tumors and Creutzfeldt-Jacob disease.,pathway:Carbohydrate degradation; glycolysis; pyruvate from D-glyceraldehyde 3-phosphate: step 4/5.,similarity:Belongs to the enolase family.,subcellular location:Can translocate to the plasma membrane in either the homodimeric (alpha/alpha) or heterodimeric (alpha/gamma) form.,subunit:Mammalian enolase is composed of 3 isozyme subunits, alpha, beta and gamma, which can form homodimers or heterodimers which are cell-type and development-specific.,tissue specificity:The alpha/alpha homodimer is expressed in embryo and in most adult tissues. The alpha/beta heterodimer and the beta/beta homodimer are found in striated muscle, and the alpha/gamma heterodimer and the gamma/gamma homodimer in neurons.,

Background

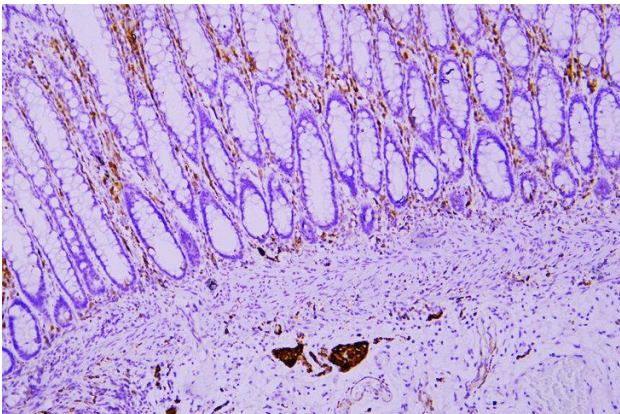
enolase 2(ENO2) Homo sapiens This gene encodes one of the three enolase isoenzymes found in mammals. This isoenzyme, a homodimer, is found in mature neurons and cells of neuronal origin. A switch from alpha enolase to gamma enolase occurs in neural tissue during development in rats and primates. [provided by RefSeq, Jul 2008],

matters needing attention

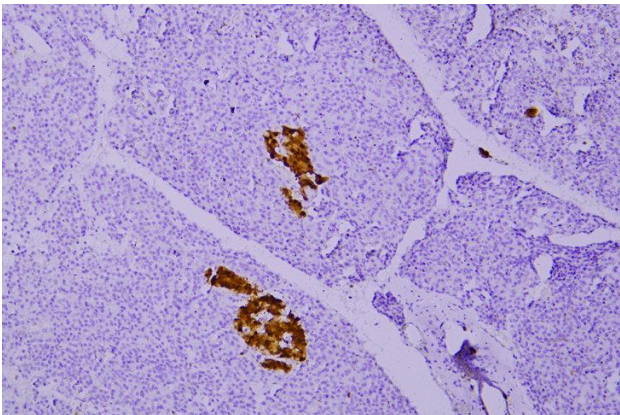
Avoid repeated freezing and thawing!

Usage suggestions

This product can be used in immunological reaction related experiments. For more information, please consult technical personnel.



Immunohistochemical analysis of paraffin-embedded human Colon. 1, Antibody was incubated at 4° overnight. 2, TRIS-EDTA of pH9.0 was used for antigen retrieval. 3,Secondary antibody was diluted at 1:200(room temperature, 30min).



Immunohistochemical analysis of paraffin-embedded human Pancreas. 1, Antibody was incubated at 4° overnight. 2, TRIS-EDTA of pH9.0 was used for antigen retrieval. 3,Secondary antibody was diluted at 1:200(room temperature, 30min).

