



Cytokeratin 18 (CK18) (ABT165R) Rabbit mAb (Ready to Use)

Catalog No	YP-rAb-18153
Isotype	IgG
Reactivity	Human,Mouse,Rat
Applications	IHC
Gene Name	KRT18 CYK18 PIG46
Protein Name	Keratin, type I cytoskeletal 18 (Cell proliferation-inducing gene 46 protein) (Cytokeratin-18) (CK-18) (Keratin-18) (K18)
Purification Process	Protein A
Specificity	This antibody detects endogenous levels of Cytokeratin 18
Formulation	The prediluted ready-to-use antibody is diluted in phosphate buffer saline containing stabilizing protein and 0.05% Proclin 300
Source	Monoclonal, Rabbit,IgG
Dilution	Ready to use for IHC Note: For IHC, we suggest antigen retrieval with TE buffer pH 9.0
Concentration	0.5 mg/ml
Purity	≥90%
Storage Stability	2° C to 8° C/1 year,Ship by ice bag
Synonyms	CK 18 ; CK-18 ; CK18 ; CYK18 ; Cytokeratin 18 ; Cytokeratin endo B ; CytokeRatin-18 ; K 18 ; K18 ; K1C18_HUMAN ; KA18 ; KeRatin 18 ; KeRatin 18, type I ; KeRatin D ; keRatin, type I cytoskeletal 18 ; KeRatin-18 ; Krt18
Observed Band	
Calculated Molecular Weight	
Cell Pathway	Cytoplasmic, Membranous
Tissue Specificity	Expressed in colon, placenta, liver and very weakly in exocervix. Increased expression observed in lymph nodes of breast carcinoma.
Function	Disease:Defects in KRT18 are a cause of cryptogenic cirrhosis [MIM:215600].,Function:Involved in the uptake of thrombin-antithrombin complexes by hepatic cells (By similarity). When phosphorylated, plays a role in filament reorganization. Involved in the delivery of mutated CFTR to the plasma membrane. Together with KRT8, is involved in interleukin-6 (IL-6)-mediated barrier protection.,induction:By IL-6.,miscellaneous:There are two types of cytoskeletal and microfibrillar keratin: I (acidic; 40-55 kDa) and II (neutral to basic; 56-70 kDa).,PTM:O-glycosylated at multiple sites; glycans consist of single

杭州臻优品生物科技有限公司

热销产品:

蛋白、一抗、抗体对、ELISA试剂盒、生化试剂盒
CCK8试剂盒、QPCR检测试剂盒

检测服务:

ELISA检测及定制服务 | 生化检测 | PCR、QPCR检测 | WB检测
ICO-IP检测 | 切片 | 染色 | 免疫组化 | 免疫荧光 | 透射电镜全套
| 宏基因组、转录组、基因组、蛋白组、代谢组测序



关注官网



关注客服



N-acetylglucosamine residues.,PTM:Phosphorylation at Ser-34 increases during mitosis. Hyperphosphorylated at Ser-53 in diseased cirrhosis liver. Phosphorylation increases by IL-6.,PTM:Proteolytically cleaved by caspases during epithelial cell apoptosis. Cleavage occurs at Asp-238 by either caspase-3, caspase-6 or caspase-7.,similarity:Belongs to the intermediate filament family.,subunit:Heterotetramer of two type I and two type II keratins. Keratin-18 associates with keratin-8. Interacts with the thrombin-antithrombin complex (By similarity). Interacts with PNN, HCV core protein and mutated CFTR. Interacts with YWHAH, YWHAH and YWHAZ only when phosphorylated. Interacts with DNAJB6, TCHP and TRADD.,tissue specificity:Expressed in colon, placenta, liver and very weakly in exocervix. Increased expression observed in lymph nodes of breast carcinoma.,

Background

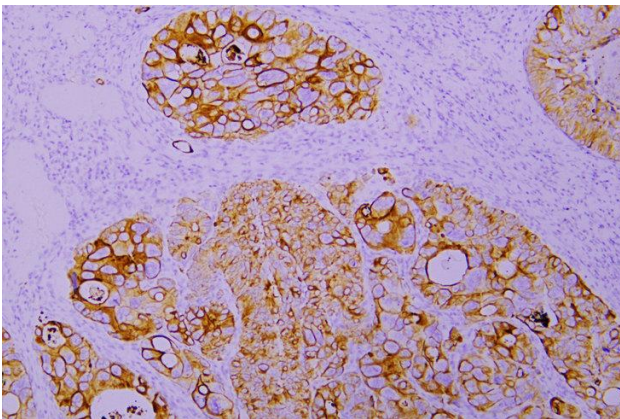
KRT18 encodes the type I intermediate filament chain keratin 18. Keratin 18, together with its filament partner keratin 8, are perhaps the most commonly found members of the intermediate filament gene family. They are expressed in single layer epithelial tissues of the body. Mutations in this gene have been linked to cryptogenic cirrhosis. Two transcript variants encoding the same protein have been found for this gene. [provided by RefSeq, Jul 2008],

matters needing attention

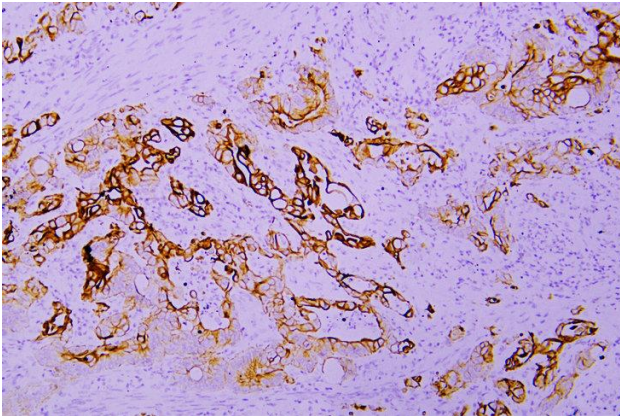
Avoid repeated freezing and thawing!

Usage suggestions

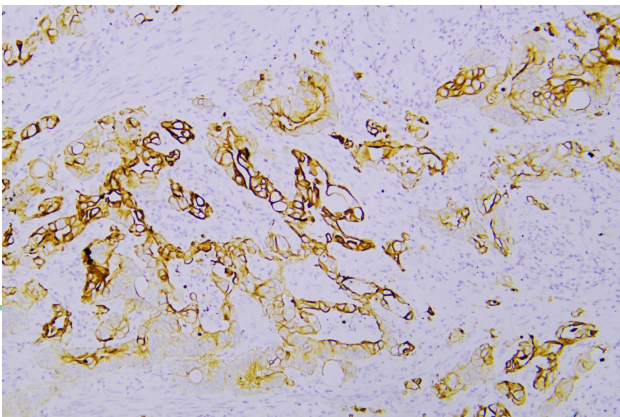
This product can be used in immunological reaction related experiments. For more information, please consult technical personnel.



Immunohistochemical analysis of paraffin-embedded human Colon adenocarcinoma. 1, Antibody was incubated at 4° overnight. 2, TRIS-EDTA of pH8.0 was used for antigen retrieval. 3,Secondary antibody was diluted at 1:200(room temperature, 30min).

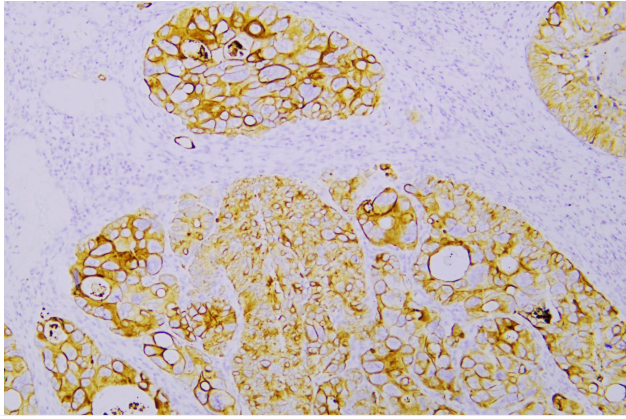


Immunohistochemical analysis of paraffin-embedded human Rectal carcinoma. 1, Antibody was incubated at 4° overnight. 2, TRIS-EDTA of pH8.0 was used for antigen retrieval. 3,Secondary antibody was diluted at 1:200(room temperature, 30min).



Human rectal adenocarcinoma was stained with anti-Cytokeratin 18 (CK18) (ABT165R) rabbit mAb





Human colon cancer was stained with anti-Cytokeratin 18 (CK18) (ABT165R) rabbit mAb

杭州臻优品生物科技有限公司

热销产品:

蛋白、一抗、抗体对、ELISA试剂盒、生化试剂盒
CCK8试剂盒、QPCR检测试剂盒

检测服务:

ELISA检测及定制服务 | 生化检测 | PCR、QPCR检测 | WB检测
ICO-IP检测 | 切片 | 染色 | 免疫组化 | 免疫荧光 | 透射电镜全套
| 宏基因组、转录组、基因组、蛋白组、代谢组测序



关注官网



关注客服