



Cytokeratin 13 (CK13) (ABT160R) Rabbit mAb (Ready to Use)

Catalog No	YP-rAb-18151
Isotype	IgG
Reactivity	Human
Applications	IHC
Gene Name	KRT13
Protein Name	47 kDa cytokeRatin;CK-13;CK13;Cytokeratin 13;Cytokeratin-13;K13;K1C13_HUMAN;Ka13;Keratin 13;Keratin;keratin type I cytoskeletal 13;Keratin-13;Krt-1.13;Krt1-13;KRT13;MGC161462;MGC3781;type I cytoskeletal 13;Type I keratin Ka13;WSN2
Purification Process	Protein A
Specificity	This antibody detects endogenous levels of Cytokeratin 13
Formulation	The prediluted ready-to-use antibody is diluted in phosphate buffer saline containing stabilizing protein and 0.05% Proclin 300
Source	Monoclonal, Rabbit,IgG
Dilution	Ready to use for IHC Note: For IHC, we suggest antigen retrieval with TE buffer pH 9.0
Concentration	0.5 mg/ml
Purity	≥90%
Storage Stability	2° C to 8° C/1 year,Ship by ice bag
Synonyms	47 kDa cytokeRatin ; CK-13 ; CK13 ; Cytokeratin 13 ; CytokeRatin-13 ; K13 ; K1C13_HUMAN ; Ka13 ; KeRatin 13 ; KeRatin ; keRatin type I cytoskeletal 13 ; KeRatin-13 ; Krt-1.13 ; Krt1-13 ; KRT13 ; MGC161462 ; MGC3781 ; type I cytoskeletal 13 ; Type I keRatin Ka13 ; WSN2
Observed Band	
Calculated Molecular Weight	
Cell Pathway	Cytoplasmic, Membranous
Tissue Specificity	Tonsil
Function	Disease:Defects in KRT13 are a cause of white sponge nevus of cannon (WSN) [MIM:193900]. WSN is a rare autosomal dominant disorder which predominantly affects non-cornified stratified squamous epithelia. Clinically, it is characterized by the presence of soft, white, and spongy plaques in the oral mucosa. The





characteristic histopathologic features are epithelial thickening, parakeratosis, and vacuolization of the suprabasal layer of oral epithelial keratinocytes. Less frequently the mucous membranes of the nose, esophagus, genitalia and rectum are involved. miscellaneous: There are two types of cytoskeletal and microfibrillar keratin: I (acidic; 40-55 kDa) and II (neutral to basic; 56-70 kDa). online information: Keratin-13 entry, PTM: O-glycosylated; glycans consist of single N-acetylglucosamine residues. similarity: Belongs to the intermediate filament family. subunit: Heterotetramer of two type I and two type II keratins. keratin-13 is generally associated with keratin-4. tissue specificity: Expressed in some epidermal sweat gland ducts (at protein level) and in exocervix, esophagus and placenta.

Background

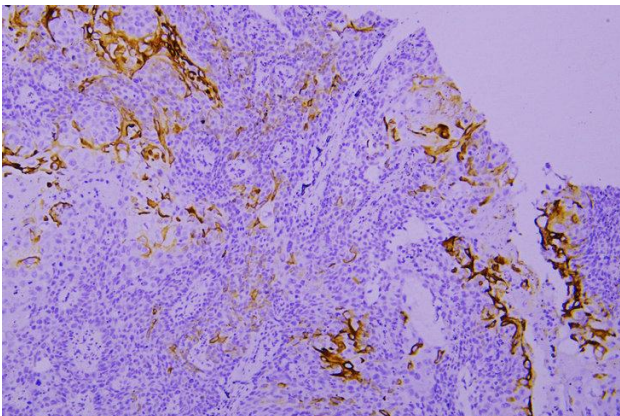
The protein encoded by this gene is a member of the keratin gene family. The keratins are intermediate filament proteins responsible for the structural integrity of epithelial cells and are subdivided into cytokeratins and hair keratins. Most of the type I cytokeratins consist of acidic proteins which are arranged in pairs of heterotypic keratin chains. This type I cytokeratin is paired with keratin 4 and expressed in the suprabasal layers of non-cornified stratified epithelia. Mutations in this gene and keratin 4 have been associated with the autosomal dominant disorder White Sponge Nevus. The type I cytokeratins are clustered in a region of chromosome 17q21.2. Alternative splicing of this gene results in multiple transcript variants; however, not all variants have been described. [provided by RefSeq, Jul 2008],

matters needing attention

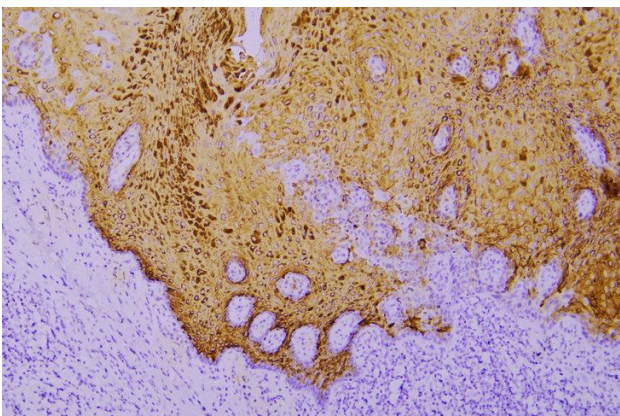
Avoid repeated freezing and thawing!

Usage suggestions

This product can be used in immunological reaction related experiments. For more information, please consult technical personnel.

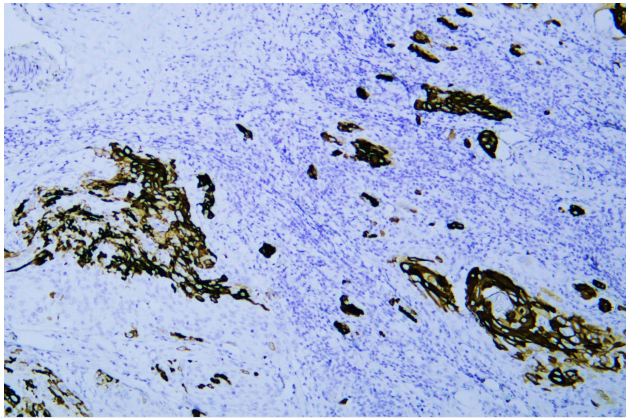


Immunohistochemical analysis of paraffin-embedded human Laryngeal squamous cell carcinomas. 1, Antibody was incubated at 4° overnight. 2, Citrate buffer of pH6.0 was used for antigen retrieval. 3, Secondary antibody was diluted at 1:200 (room temperature, 30min).



Immunohistochemical analysis of paraffin-embedded human Oral squamous cell carcinoma. 1, Antibody was incubated at 4° overnight. 2, Citrate buffer of pH6.0 was used for antigen retrieval. 3, Secondary antibody was diluted at 1:200 (room temperature, 30min).





Human cervical squamous cell carcinoma was stained with anti-Cytokeratin 13 (CK13) (ABT160R) rabbit mAb

杭州臻优品生物科技有限公司

热销产品:

蛋白、一抗、抗体对、ELISA试剂盒、生化试剂盒
CCK8试剂盒、QPCR检测试剂盒

检测服务:

ELISA检测及定制服务 | 生化检测 | PCR、QPCR检测 | WB检测
ICO-IP检测 | 切片 | 染色 | 免疫组化 | 免疫荧光 | 透射电镜全套
| 宏基因组、转录组、基因组、蛋白组、代谢组测序



关注官网



关注客服