



CD61 (ABT134R) Rabbit mAb (Ready to Use)

Catalog No	YP-rAb-18150
Isotype	IgG
Reactivity	Human
Applications	IHC
Gene Name	ITGB3
Protein Name	Integrin beta-3 (Platelet membrane glycoprotein IIIa) (GPIIIa) (CD antigen CD61)
Purification Process	Protein A
Specificity	This antibody detects endogenous levels of Integrin β 3
Formulation	The prediluted ready-to-use antibody is diluted in phosphate buffer saline containing stabilizing protein and 0.05% Proclin 300
Source	Monoclonal, Rabbit,IgG
Dilution	Ready to use for IHC Note: For IHC, we suggest antigen retrieval with TE buffer pH 9.0
Concentration	0.5 mg/ml
Purity	\geq 90%
Storage Stability	2° C to 8° C/1 year,Ship by ice bag
Synonyms	BDPLT16 ; BDPLT2 ; CD 61 ; CD61 ; CD61 antigen ; GP3A ; GPIIIa ; GT ; HPA 1 ; HPA 4 ; Integrin beta 3 ; platelet glycoprotein IIIa antigen CD61 ; Integrin beta chain beta 3 ; Integrin beta-3 ; ITB3_HUMAN ; ITG B3 ; ITGB 3 ; ITGB3 ; NAIT ; platelet fibrinogen receptor ; Platelet fibrinogen receptor beta subunit ; Platelet fibrinogen receptor, beta subunit ; Platelet glycoprotein IIIa ; Platelet glycoprotein IIIa precursor ; Platelet membrane glycoprotein IIIa ; PTP
Observed Band	
Calculated Molecular Weight	
Cell Pathway	Cytoplasmic
Tissue Specificity	Isoform beta-3A and isoform beta-3C are widely expressed. Isoform beta-3A is specifically expressed in osteoblast cells; isoform beta-3C is specifically expressed in prostate and testis.
Function	Disease:Defects in ITGB3 are a cause of Glanzmann thrombasthenia (GT) [MIM:273800]; also known as thrombasthenia of Glanzmann and Naegeli. GT is the most common inherited disease of platelets. Its inheritance is autosomal recessive. It is characterized by mucocutaneous bleeding of mild-to-moderate





severity and the inability of this integrin to recognize macromolecular or synthetic peptide ligands. GT has been classified clinically into types I and II. In type I, platelets show absence of the glycoprotein IIb-IIIa complexes at their surface and lack fibrinogen and clot retraction capability. In type II, the platelets express the GPIIb-IIIa complex at reduced levels (5-20% controls), have detectable amounts of fibrinogen, and have low or moderate clot retraction capability. The platelets of GT variants have normal or near normal (60-100%) expression of dysfunctional receptors. Function: Integrin alpha-V/beta-3 is a receptor for cytotactin, fibronectin, laminin, matrix metalloproteinase-2, osteopontin, osteomodulin, prothrombin, thrombospondin, vitronectin and von Willebrand factor. Integrin alpha-IIb/beta-3 is a receptor for fibronectin, fibrinogen, plasminogen, prothrombin, thrombospondin and vitronectin. Integrins alpha-IIb/beta-3 and alpha-V/beta-3 recognize the sequence R-G-D in a wide array of ligands. Integrin alpha-IIb/beta-3 recognizes the sequence H-H-L-G-G-G-A-K-Q-A-G-D-V in fibrinogen gamma chain. Following activation integrin alpha-IIb/beta-3 brings about platelet/platelet interaction through binding of soluble fibrinogen. This step leads to rapid platelet aggregation which physically plugs ruptured endothelial surface. In case of HIV-1 infection, the interaction with extracellular viral Tat protein seems to enhance angiogenesis in Kaposi's sarcoma lesions. online information: The Singapore human mutation and polymorphism database. polymorphism: Position 169 is associated with platelet-specific alloantigen HPA-4 (PEN or YUK). HPA-4A/PEN(A)/YUK(A) has Arg-169 and HPA-4B/PEN(B)/YUK(B) has Gln-169. HPA-4B is involved in neonatal alloimmune thrombocytopenia (NAIT or NATP). polymorphism: Position 433 is associated with platelet-specific alloantigen MO. MO(-) has Pro-433 and MO(+) has Ala-433. MO(+) is involved in NAIT. polymorphism: Position 515 is associated with platelet-specific alloantigen CA/TU. CA(-)/TU(-) has Arg-515 and CA(+)/TU(+) has Gln-515. CA(+) is involved in NAIT. polymorphism: Position 59 is associated with platelet-specific alloantigen HPA-1 (ZW or PL(A)). HPA-1A/ZW(A)/PL(A1) has Leu-59 and HPA-1B/ZW(B)/PL(A2) has Pro-59. polymorphism: Position 662 is associated with platelet-specific alloantigen SR(A). SR(A)(-) has Arg-662 and SR(A)(+) has Cys-662. PTM: Phosphorylated on tyrosine residues in response to thrombin-induced platelet aggregation. Probably involved in outside-in signaling. A peptide (AA 740-762) is capable of binding GRB2 only when both Tyr-773 and Tyr-785 are phosphorylated. Phosphorylation of Thr-779 inhibits SHC binding. similarity: Belongs to the integrin beta chain family. similarity: Contains 1 VWFA domain. subunit: Heterodimer of an alpha and a beta subunit. Beta-3 associates with either alpha-IIb or alpha-V. Isoform Beta-3C interacts with FLNB. Interacts with HIV-1 Tat. tissue specificity: Isoform beta-3A and isoform beta-3C are widely expressed. Isoform beta-3A is specifically expressed in osteoblast cells; isoform beta-3C is specifically expressed in prostate and testis.

Background

The ITGB3 protein product is the integrin beta chain beta 3. Integrins are integral cell-surface proteins composed of an alpha chain and a beta chain. A given chain may combine with multiple partners resulting in different integrins. Integrin beta 3 is found along with the alpha IIb chain in platelets. Integrins are known to participate in cell adhesion as well as cell-surface mediated signalling. [provided by RefSeq, Jul 2008],

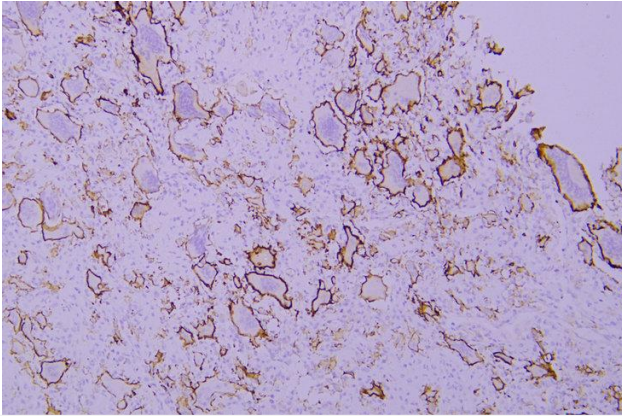
matters needing attention

Avoid repeated freezing and thawing!

Usage suggestions

This product can be used in immunological reaction related experiments. For more information, please consult technical personnel.





Immunohistochemical analysis of paraffin-embedded human Giant cell tumor of bone. 1, Antibody was incubated at 4° overnight. 2, Citrate buffer of pH6.0 was used for antigen retrieval. 3, Secondary antibody was diluted at 1:200(room temperature, 30min).

杭州臻优品生物科技有限公司

热销产品:

蛋白、一抗、抗体对、ELISA试剂盒、生化试剂盒
CCK8试剂盒、QPCR检测试剂盒

检测服务:

ELISA检测及定制服务 | 生化检测 | PCR、QPCR检测 | WB检测
ICO-IP检测 | 切片 | 染色 | 免疫组化 | 免疫荧光 | 透射电镜全套
| 宏基因组、转录组、基因组、蛋白组、代谢组测序



关注官网



关注客服