



CD21 (ABT113R) Rabbit mAb (Ready to Use)

Catalog No	YP-rAb-18139
Isotype	IgG
Reactivity	Human
Applications	IHC
Gene Name	CR2
Protein Name	Complement receptor type 2 (Cr2) (Complement C3d receptor) (Epstein-Barr virus receptor) (EBV receptor) (CD antigen CD21)
Purification Process	Protein A
Specificity	This antibody detects endogenous levels of CD21
Formulation	The prediluted ready-to-use antibody is diluted in phosphate buffer saline containing stabilizing protein and 0.05% Proclin 300
Source	Monoclonal, Rabbit,IgG
Dilution	Ready to use for IHC Note: For IHC, we suggest antigen retrieval with TE buffer pH 9.0
Concentration	0.5 mg/ml
Purity	≥90%
Storage Stability	2° C to 8° C/1 year,Ship by ice bag
Synonyms	C3DR ; CD 21 ; CD21 ; Complement C3d receptor 2 ; Complement C3d receptor ; Complement component (3d/Epstein Barr virus) receptor 2 ; Complement receptor type 2 ; CR ; Cr2 ; CR2_HUMAN ; CVID7 ; EBV receptor ; EBV-R ; Epstein Barr virus receptor ; Epstein-Barr virus receptor ; EVBR ; SLEB9
Observed Band	
Calculated Molecular Weight	
Cell Pathway	Membranous
Tissue Specificity	Mature B-lymphocytes, T-lymphocytes, pharyngeal epithelial cells, astrocytes and follicular dendritic cells of the spleen.
Function	disease:Genetic variations in CR2 are associated with susceptibility to systemic lupus erythematosus type 9 (SLEB9) [MIM:610927]. Systemic lupus erythematosus (SLE) is a chronic autoimmune disease with a complex genetic basis. SLE is an inflammatory, and often febrile multisystemic disorder of connective tissue characterized principally by involvement of the skin, joints, kidneys, and serosal membranes. It is thought to represent a failure of the regulatory mechanisms of the autoimmune system.,function:Receptor for complement C3Dd, for the Epstein-Barr virus on human B-cells and T-cells and





for HNRPU. Participates in B lymphocytes activation.,similarity:Belongs to the receptors of complement activation (RCA) family.,similarity:Contains 15 Sushi (CCP/SCR) domains.,tissue specificity:Mature B-lymphocytes, T-lymphocytes, pharyngeal epithelial cells, astrocytes and follicular dendritic cells of the spleen.,

Background

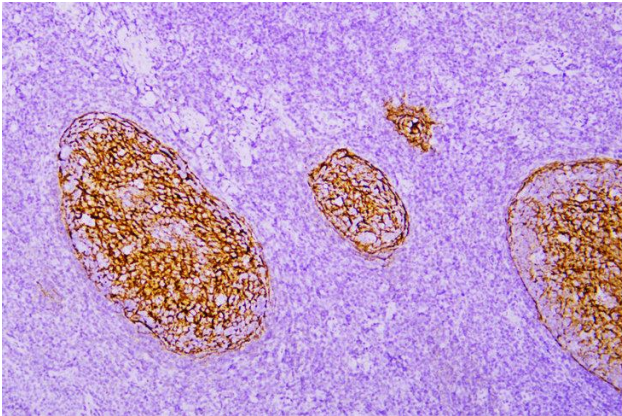
This gene encodes a membrane protein, which functions as a receptor for Epstein-Barr virus (EBV) binding on B and T lymphocytes. Genetic variations in This gene are associated with susceptibility to systemic lupus erythematosus type 9 (SLEB9). Alternatively spliced transcript variants encoding different isoforms have been found for This gene.[provided by RefSeq, Sep 2009],

matters needing attention

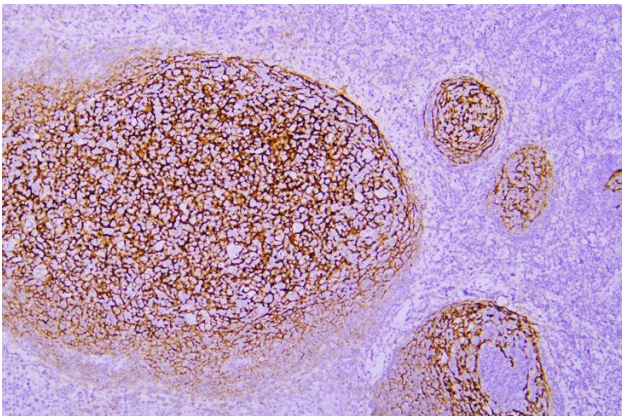
Avoid repeated freezing and thawing!

Usage suggestions

This product can be used in immunological reaction related experiments. For more information, please consult technical personnel.



Immunohistochemical analysis of paraffin-embedded human Tonsil. 1, Antibody was incubated at 4° overnight. 2, Citrate buffer of pH6.0 was used for antigen retrieval. 3,Secondary antibody was diluted at 1:200(room temperature, 30min).



Immunohistochemical analysis of paraffin-embedded human Tonsil. 1, Antibody was incubated at 4° overnight. 2, Citrate buffer of pH6.0 was used for antigen retrieval. 3,Secondary antibody was diluted at 1:200(room temperature, 30min).

