



# Negative Control for Rabbit IgG, kappa Primary Antibody

<b>Catalog No</b>	YP-rAb-18132
<b>Isotype</b>	IgG
<b>Reactivity</b>	Human,Mouse,Rat,Bovine,Pig,Chicken
<b>Applications</b>	WB,IHC,IP
<b>Gene Name</b>	
<b>Protein Name</b>	
<b>Purification Process</b>	Protein A
<b>Specificity</b>	
<b>Formulation</b>	PBS, 50% glycerol, 0.05% Proclin 300, 0.05%BSA
<b>Source</b>	Monoclonal, Rabbit,IgG
<b>Dilution</b>	IHC 1:200-1000; WB 1:2000-1: 10000; IP 1:50-1:200; Note: For IHC, we suggest antigen retrieval with TE buffer pH 9.0
<b>Concentration</b>	0.5 mg/ml
<b>Purity</b>	≥90%
<b>Storage Stability</b>	-15° C to -25° C/1 year(Do not lower than -25° C)
<b>Synonyms</b>	
<b>Observed Band</b>	
<b>Calculated Molecular Weight</b>	
<b>Cell Pathway</b>	No staining
<b>Tissue Specificity</b>	
<b>Function</b>	
<b>Background</b>	
<b>matters needing attention</b>	Avoid repeated freezing and thawing!
<b>Usage suggestions</b>	This product can be used in immunological reaction related experiments. For more information, please consult technical personnel.

## 杭州臻优品生物科技有限公司

### 热销产品:

蛋白、一抗、抗体对、ELISA试剂盒、生化试剂盒  
CCK8试剂盒、QPCR检测试剂盒

### 检测服务:

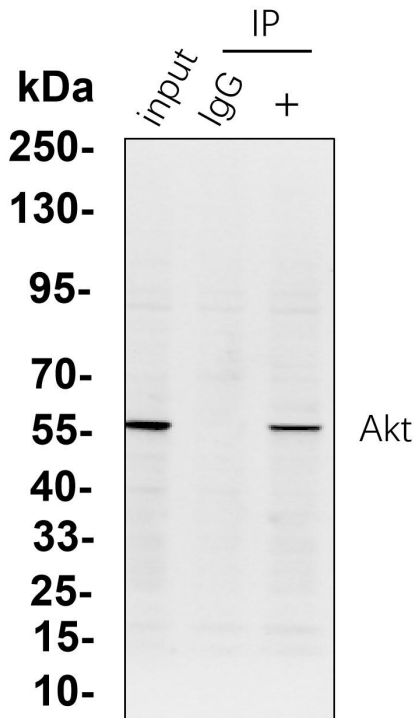
ELISA检测及定制服务 | 生化检测 | PCR、QPCR检测 | WB检测  
ICO-IP检测 | 切片 | 染色 | 免疫组化 | 免疫荧光 | 透射电镜全套  
| 宏基因组、转录组、基因组、蛋白组、代谢组测序



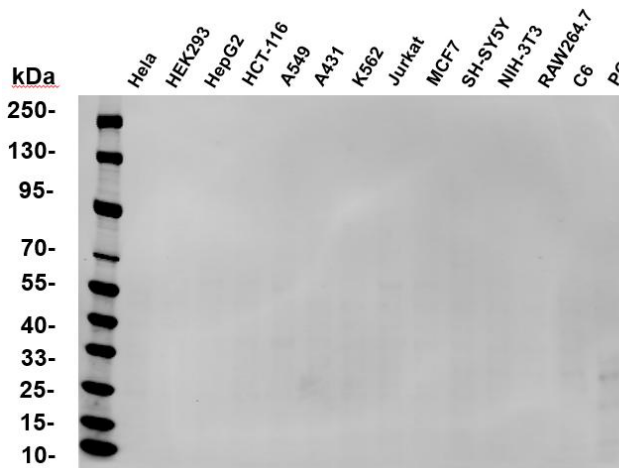
关注官网



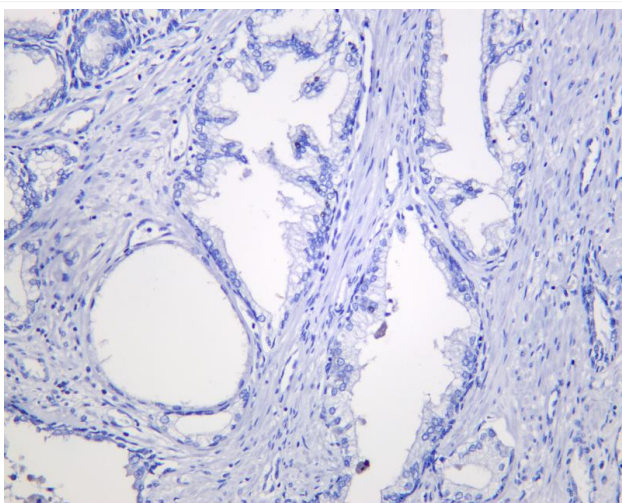
关注客服



Immunoprecipitating Akt in HeLa whole cell lysate with rabbit anti Akt (Catalog YM8463). Western blot was performed on the immunoprecipitate using anti Akt (Catalog YM8463) at 1:200 dilution, and followed by the HRP labeled anti Rabbit IgG for IP antibody at 1:5000 dilution. Lane 1 (Input): 20ug HeLa whole cell lysate. Lane 2 (-): Rabbit IgG, Isotype Control (Catalog VN0014) instead of Akt antibody in HeLa whole cell lysate. Lane 3 (+): 6ug Akt antibody IP in 1000ug HeLa whole cell lysate.



Various whole cell lysates were separated by 4-20% SDS-PAGE, and the membrane was blotted with Negative Control for Rabbit IgG, kappa Primary Antibody. The HRP-conjugated Goat anti-Rabbit IgG (H + L) antibody was used to detect the antibody. Lane1: HeLa - Human cervical cancer Lane2: HEK293 - Human normal embryonic kidney Lane3: HepG2 - Human hepatocellular carcinoma Lane4: HCT-116 - Human colon cancer Lane5: A549 - Human lung adenocarcinoma Lane6: A431 - Human skin squamous cell carcinoma Lane7: K562 - Human chronic myeloid leukemia Lane8: Jurkat - Human acute T cell leukemia cells Lane9: MCF7 - Human breast cancer Lane10: SH-SY5Y - Human neuroblastoma cells Lane11: NIH-3T3 - NIH mouse fibroblasts Lane12: RAW264.7 - Mouse mononuclear macrophage leukemia cells Lane13: C6 - Rat glioma cells Lane14: PC-12 - Pheochromocytoma in rats Predicted band size: None Observed band size: None



Human prostate was stained with anti-Negative Control for Rabbit IgG, kappa Primary Antibody

## 杭州臻优品生物科技有限公司

### 热销产品:

蛋白、一抗、抗体对、ELISA试剂盒、生化试剂盒  
CCK8试剂盒、QPCR检测试剂盒

### 检测服务:

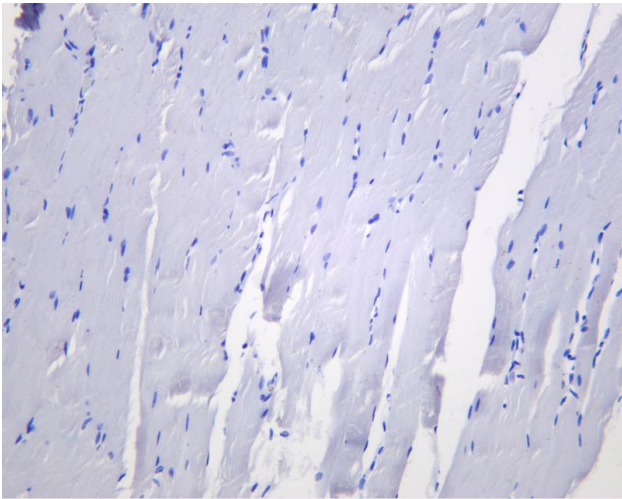
ELISA检测及定制服务 | 生化检测 | PCR、QPCR检测 | WB检测  
ICO-IP检测 | 切片 | 染色 | 免疫组化 | 免疫荧光 | 透射电镜全套  
| 宏基因组、转录组、基因组、蛋白组、代谢组测序



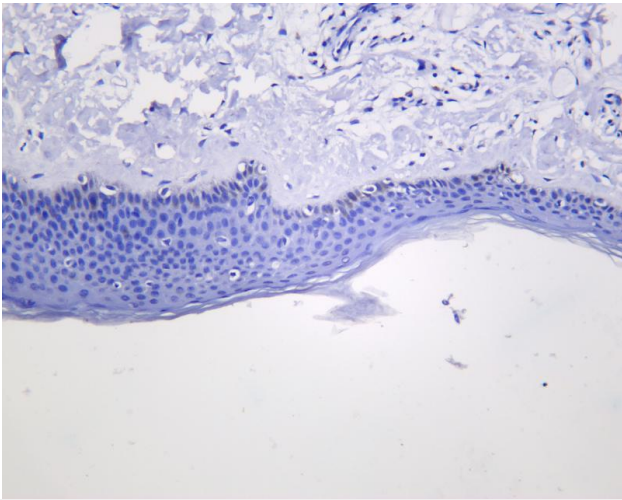
关注官网



关注客服



Human skeletal was stained with anti-Negative Control for Rabbit IgG, kappa Primary Antibody



Human skin was stained with anti-Negative Control for Rabbit IgG, kappa Primary Antibody

## 杭州臻优品生物科技有限公司

### 热销产品:

蛋白、一抗、抗体对、ELISA试剂盒、生化试剂盒  
CCK8试剂盒、QPCR检测试剂盒

### 检测服务:

ELISA检测及定制服务 | 生化检测 | PCR、QPCR检测 | WB检测  
ICO-IP检测 | 切片 | 染色 | 免疫组化 | 免疫荧光 | 透射电镜全套  
| 宏基因组、转录组、基因组、蛋白组、代谢组测序



关注官网



关注客服