



GAPDH Rabbit mAb

Catalog No	YP-rAb-18112
Isotype	IgG
Reactivity	Human,Mouse,Rat,Rabbit,Dog,Monkey
Applications	WB,ELISA
Gene Name	GAPDH
Protein Name	Glyceraldehyde-3-phosphate dehydrogenase
Purification Process	Protein A
Specificity	Endogenous
Formulation	PBS, 50% glycerol, 0.05% Proclin 300, 0.05%BSA
Source	Monoclonal, Rabbit,IgG
Dilution	WB 1:500-2000; ELISA 1:20000
Concentration	0.5 mg/ml
Purity	≥90%
Storage Stability	-15° C to -25° C/1 year(Do not lower than -25° C)
Synonyms	GAPDH ; GAPD ; CDABP0047 ; OK/SW-cl.12 ; Glyceraldehyde-3-phosphate dehydrogenase ; GAPDH ; Peptidyl-cysteine S-nitrosylase GAPDH
Observed Band	37kD
Calculated Molecular Weight	37kD
Cell Pathway	Cytoplasm, cytosol . Nucleus . Cytoplasm, perinuclear region . Membrane . Cytoplasm, cytoskeleton . Translocates to the nucleus following S-nitrosylation and interaction with SIAH1, which contains a nuclear localization signal (By similarity). Postnuclear and Perinuclear regions (PubMed:12829261). .
Tissue Specificity	Astrocytoma,Brain,Cajal-Retzius cell,Colon adenocarcinoma,Epitheliu
Function	Catalytic activity:D-glyceraldehyde 3-phosphate + phosphate + NAD(+) = 3-phospho-D-glyceroyl phosphate + NADH.,Function:Independent of its glycolytic activity it is also involved in membrane trafficking in the early secretory pathway.,online information:Glyceraldehyde 3-phosphate dehydrogenase entry,pathway:Carbohydrate degradation; glycolysis; pyruvate from D-glyceraldehyde 3-phosphate: step 1.,pathway:Carbohydrate degradation; glycolysis; pyruvate from D-glyceraldehyde 3-phosphate: step 1/5.,PTM:Reversible S-nitrosylation of Cys-152 inhibits enzymatic activity and increases endogenous ADP-ribosylation, which inhibits the enzyme in a non-reversible manner. The latter modification is more likely to be a





pathophysiological event associated with inhibition of gluconeogenesis.,sequence Caution:Differs quite extensively.,similarity:Belongs to the glyceraldehyde-3-phosphate dehydrogenase family.,subcellular location:Postnuclear and Perinuclear regions.,subunit:Homotetramer.,subunit:Homotetramer. Binds PRKCI.,

Background

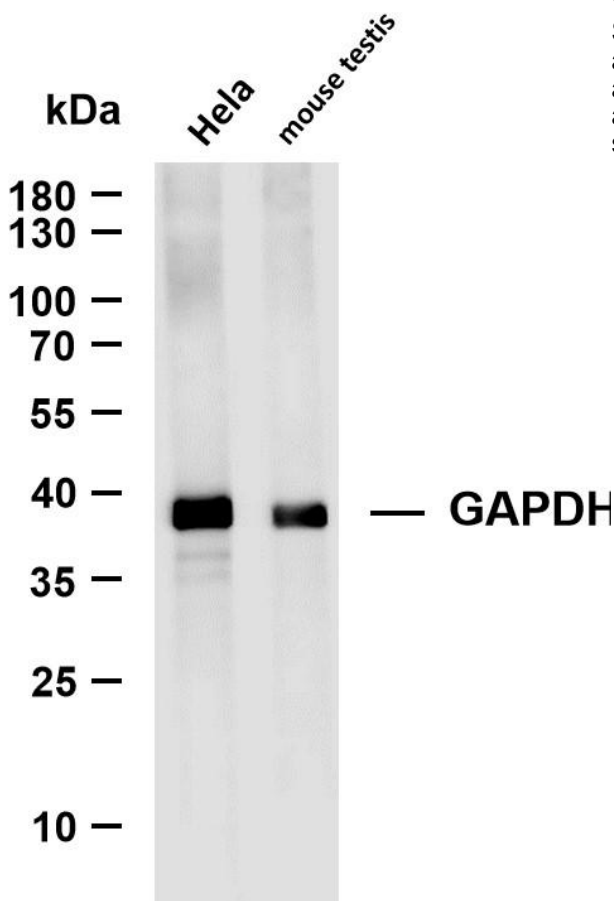
glyceraldehyde-3-phosphate dehydrogenase(GAPDH) Homo sapiens This gene encodes a member of the glyceraldehyde-3-phosphate dehydrogenase protein family. The encoded protein has been identified as a moonlighting protein based on its ability to perform mechanistically distinct functions. The product of this gene catalyzes an important energy-yielding step in carbohydrate metabolism, the reversible oxidative phosphorylation of glyceraldehyde-3-phosphate in the presence of inorganic phosphate and nicotinamide adenine dinucleotide (NAD). The encoded protein has additionally been identified to have uracil DNA glycosylase activity in the nucleus. Also, this protein contains a peptide that has antimicrobial activity against *E. coli*, *P. aeruginosa*, and *C. albicans*. Studies of a similar protein in mouse have assigned a variety of additional functions including nitrosylation of nuclear proteins, the regulation of mRNA stability, and acting as a transferri

matters needing attention

Avoid repeated freezing and thawing!

Usage suggestions

This product can be used in immunological reaction related experiments. For more information, please consult technical personnel.



Various whole cell lysates were separated by 4-20% SDS-PAGE, and the membrane was blotted with anti-GAPDH antibody. The HRP-conjugated Goat anti-Rabbit IgG(H + L) antibody was used to detect the antibody. Lane 1: HeLa Lane 2: mouse testis Predicted band size: 37kDa Observed band size: 37kDa

