



# SDHA Rabbit mAb

|                                    |   |
|------------------------------------|---|
| <b>Catalog No</b>                  | YP-rAb-18104  |
| <b>Isotype</b>                     | IgG   |
| <b>Reactivity</b>                  | Human,Mouse,Rat   |
| <b>Applications</b>                | WB,IHC,IF,ELISA   |
| <b>Gene Name</b>                   | SDHA  |
| <b>Protein Name</b>                | Succinate dehydrogenase [ubiquinone] flavoprotein subunit mitochondrial   |
| <b>Purification Process</b>        | Protein A   |
| <b>Specificity</b>                 | Endogenous  |
| <b>Formulation</b>                 | PBS, 50% glycerol, 0.05% Proclin 300, 0.05%BSA  |
| <b>Source</b>                      | Monoclonal, Rabbit,IgG  |
| <b>Dilution</b>                    | IHC 1:200-1000; WB 1:1000-5000; IF 1:200-1000; ELISA 1:5000-20000; Note: For IHC, we suggest antigen retrieval with TE buffer pH 9.0  |
| <b>Concentration</b>               | 0.5 mg/ml   |
| <b>Purity</b>                      | ≥90%  |
| <b>Storage Stability</b>           | -15° C to -25° C/1 year(Do not lower than -25° C)   |
| <b>Synonyms</b>                    | SDHA ; SDH2 ; SDHF ; Succinate dehydrogenase [ubiquinone] flavoprotein subunit ; mitochondrial ; Flavoprotein subunit of complex II ; Fp  |
| <b>Observed Band</b>               | 73kD  |
| <b>Calculated Molecular Weight</b> | 73kD  |
| <b>Cell Pathway</b>                | Cytoplasmic   |
| <b>Tissue Specificity</b>          | Adipocyte,Brain,Colon,Heart,Liver,Placenta,   |
| <b>Function</b>                    | Catalytic activity:Succinate + ubiquinone = fumarate + ubiquinol.,cofactor:FAD.,Disease:Defects in SDHA are a cause of complex II mitochondrial respiratory chain deficiency [MIM:252011]; also known as succinate CoQ reductase deficiency. Defects of oxidative phosphorylation give rise to heterogeneous clinical symptoms ranging from isolated organ dysfunction to multisystem disorder. A deficiency of complex II represents a rare cause of mitochondrial encephalomyopathy, leukodystrophy, late-onset optic atrophy and ataxia, myopathy with exercise intolerance, and isolated cardiomyopathy.,Disease:Defects in SDHA are a cause of Leigh syndrome (LS) [MIM:256000]. LS is a severe disorder characterized by bilaterally symmetrical necrotic lesions in subcortical brain regions.,Function:Flavoprotein (FP) subunit of succinate dehydrogenase (SDH) that is involved in complex II of the mitochondrial |

## 杭州臻优品生物科技有限公司

### 热销产品:

蛋白、一抗、抗体对、ELISA试剂盒、生化试剂盒  
CCK8试剂盒、QPCR检测试剂盒

### 检测服务:

ELISA检测及定制服务 | 生化检测 | PCR、QPCR检测 | WB检测  
| CO-IP检测 | 切片 | 染色 | 免疫组化 | 免疫荧光 | 透射电镜全套  
| 宏基因组、转录组、基因组、蛋白组、代谢组测序



关注官网



关注客服



electron transport chain and is responsible for transferring electrons from succinate to ubiquinone (coenzyme Q).,miscellaneous:The complex, present in mitochondria, can be degraded to form EC 1.3.99.1, which no longer reacts with ubiquinone.,pathway:Carbohydrate metabolism; tricarboxylic acid cycle.,sequence Caution:Differs extensively from that shown.,similarity:Belongs to the FAD-dependent oxidoreductase 2 family. FRD/SDH subfamily.,subunit:Component of complex II composed of four subunits: the flavoprotein (FP) sdha, iron-sulfur protein (IP) sdhb, and a cytochrome b560 composed of sdhc and sdhd.,

## Background

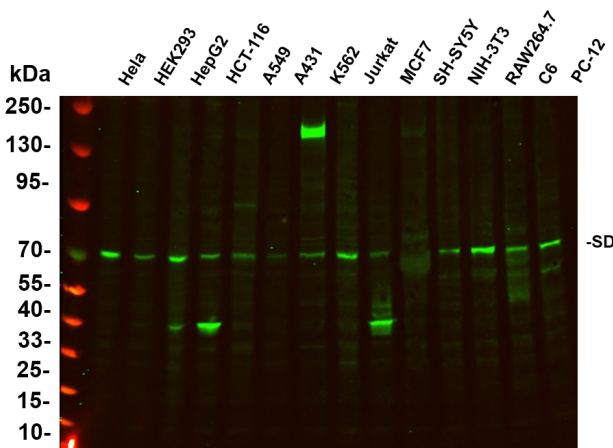
This gene encodes a major catalytic subunit of succinate-ubiquinone oxidoreductase, a complex of the mitochondrial respiratory chain. The complex is composed of four nuclear-encoded subunits and is localized in the mitochondrial inner membrane. Mutations in this gene have been associated with a form of mitochondrial respiratory chain deficiency known as Leigh Syndrome. A pseudogene has been identified on chromosome 3q29. Alternatively spliced transcript variants encoding different isoforms have been found for this gene. [provided by RefSeq, Jun 2014],

## matters needing attention

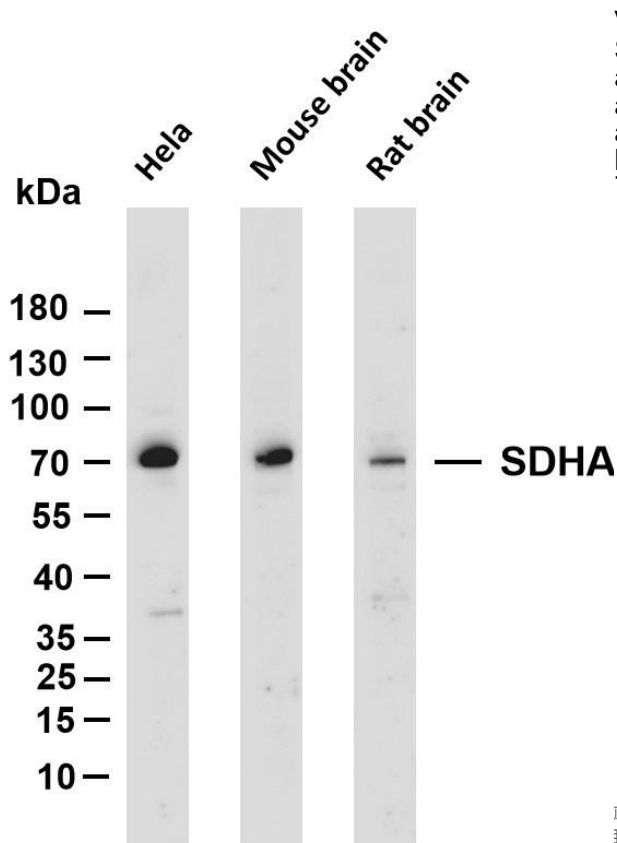
Avoid repeated freezing and thawing!

## Usage suggestions

This product can be used in immunological reaction related experiments. For more information, please consult technical personnel.

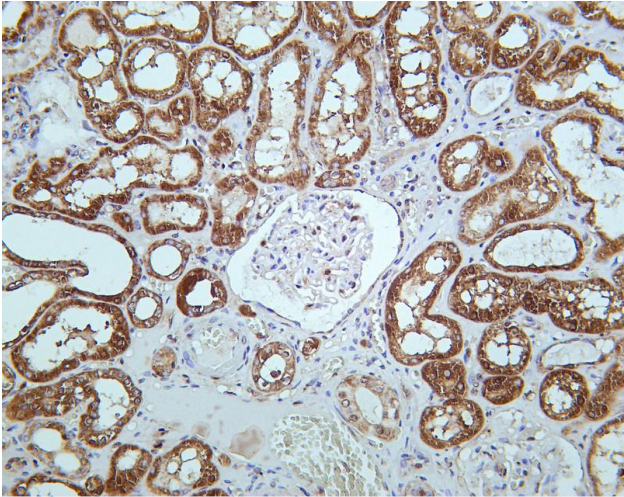


Various whole cell lysates were separated by 4-20% SDS-PAGE, and the primary antibody was used at 4 °C, over night with a 1:2500 dilution . The Dylight 800-conjugated Goat anti-Rabbit antibody

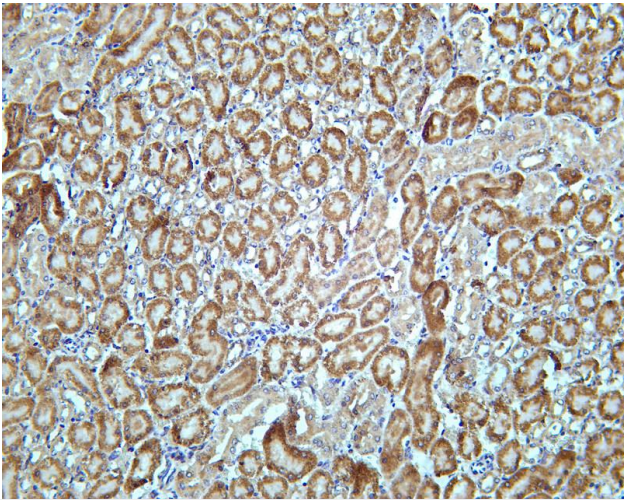


Various whole cell lysates were separated by 4-20% SDS-PAGE, and the membrane was blotted with anti-SDHA antibody. The HRP-conjugated Goat anti-Rabbit IgG(H + L) antibody was used to detect the antibody. Lane 1: HeLa Lane 2: Mouse brain Lane 3: Rat brain Predicted band size: 73kDa Observed band size: 73kDa

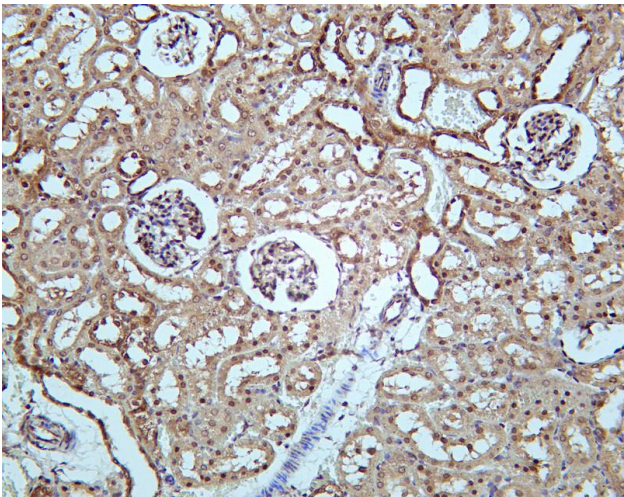




Human kidney was stained with Anti-SDHA rabbit antibody



Mouse kidney was stained with Anti-SDHA rabbit antibody



Rat kidney was stained with Anti-SDHA rabbit antibody

## 杭州臻优品生物科技有限公司

### 热销产品:

蛋白、一抗、抗体对、ELISA试剂盒、生化试剂盒  
CCK8试剂盒、QPCR检测试剂盒

### 检测服务:

ELISA检测及定制服务 | 生化检测 | PCR、QPCR检测 | WB检测  
ICO-IP检测 | 切片 | 染色 | 免疫组化 | 免疫荧光 | 透射电镜全套  
| 宏基因组、转录组、基因组、蛋白组、代谢组测序



关注官网



关注客服