



Lactate Dehydrogenase Isoenzyme V Rabbit mAb

Catalog No	YP-rAb-18090
Isotype	IgG
Reactivity	Human,Mouse,Rat
Applications	WB,IHC,IF,ELISA
Gene Name	LDHA PIG19
Protein Name	L-lactate dehydrogenase A chain (LDH-A) (Cell proliferation-inducing gene 19 protein) (LDH muscle subunit) (LDH-M) (Renal carcinoma antigen NY-REN-59)
Purification Process	Protein A
Specificity	Endogenous
Formulation	PBS, 50% glycerol, 0.05% Proclin 300, 0.05%BSA
Source	Monoclonal, Rabbit,IgG
Dilution	IHC 1:200-1000; WB 1:500-2000; IF 1:200-1000; ELISA 1:5000-20000; Note: For IHC, we suggest antigen retrieval with TE buffer pH 9.0
Concentration	0.5 mg/ml
Purity	≥90%
Storage Stability	-15° C to -25° C/1 year(Do not lower than -25° C)
Synonyms	
Observed Band	36kD
Calculated Molecular Weight	36kD
Cell Pathway	Cytoplasm
Tissue Specificity	Predominantly expressed in anaerobic tissues such as skeletal muscle and liver.
Function	Catalytic activity:(S)-lactate + NAD(+) = pyruvate + NADH.,Caution:The sequence shown here is derived from an Ensembl automatic analysis pipeline and should be considered as preliminary data.,Disease:Defects in LDHA are a cause of exertional myoglobinuria.,online information:Lactate dehydrogenase entry,pathway:Fermentation; pyruvate fermentation to lactate; (S)-lactate from pyruvate: step 1/1.,similarity:Belongs to the LDH/MDH superfamily.,similarity:Belongs to the LDH/MDH superfamily. LDH family.,subunit:Homotetramer.,
Background	The protein encoded by this gene catalyzes the conversion of L-lactate and NAD to pyruvate and NADH in the final step of anaerobic glycolysis. The protein is found predominantly in muscle tissue and belongs to the lactate dehydrogenase family. Mutations in this gene have been linked to exertional myoglobinuria.





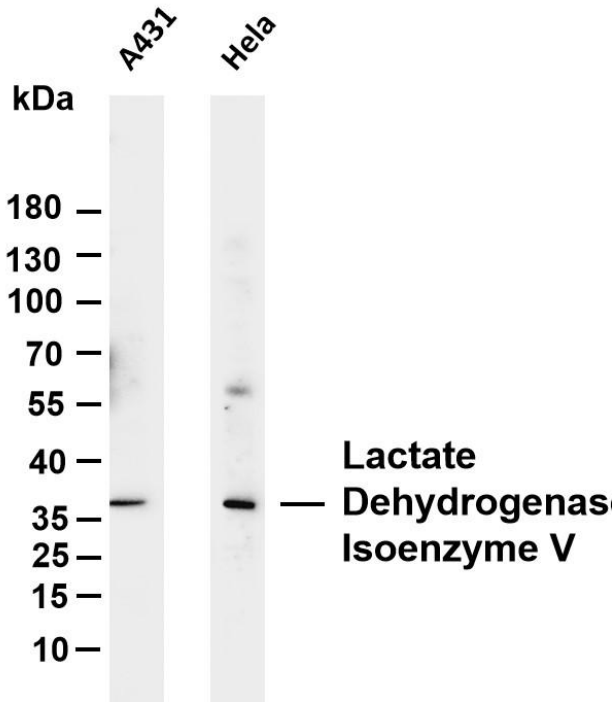
Multiple transcript variants encoding different isoforms have been found for this gene. The human genome contains several non-transcribed pseudogenes of this gene. [provided by RefSeq, Sep 2008],

matters needing attention

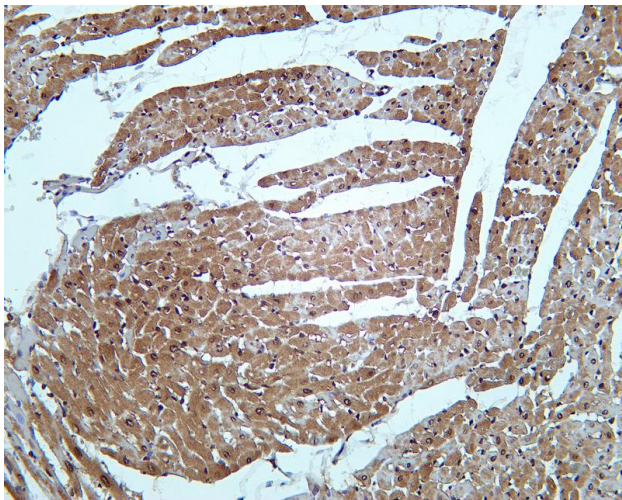
Avoid repeated freezing and thawing!

Usage suggestions

This product can be used in immunological reaction related experiments. For more information, please consult technical personnel.

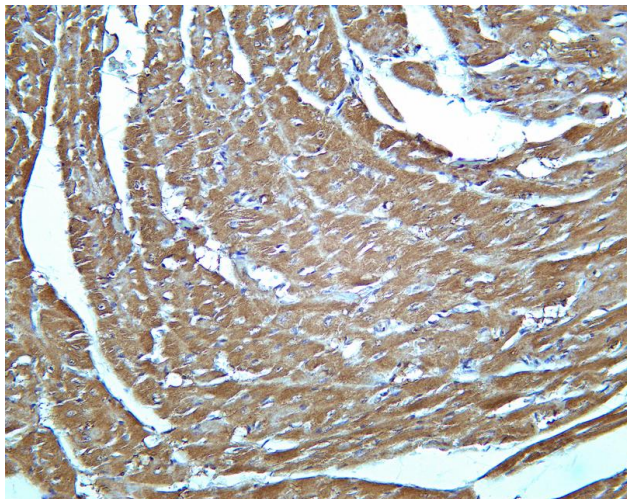


Various whole cell lysates were separated by 4-20% SDS-PAGE, and the membrane was blotted with anti-Lactate Dehydrogenase Isoenzyme V antibody. The HRP-conjugated Goat anti-Rabbit IgG(H + L) antibody was used to detect the antibody. Lane 1: A431 Lane 2: HeLa Predicted band size: 36kDa Observed band size: 36kDa

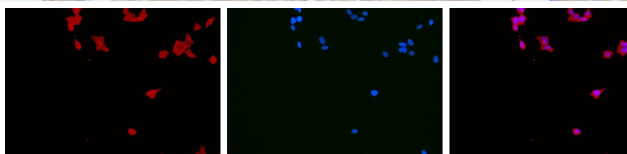


Rat heart was stained with Anti-Lactate Dehydrogenase Isoenzyme V rabbit antibody





Mouse heart was stained with Anti-Lactate Dehydrogenase Isoenzyme V rabbit antibody



Immunofluorescence analysis of HEK293. Picture A: Lactate Dehydrogenase Isoenzyme V antibody (red). Picture B: DAPI (blue). Picture C: Merge of A+B

A

B

C

