



RIP Rabbit mAb

Catalog No	YP-rAb-18080
Isotype	IgG
Reactivity	Human
Applications	WB,IHC,IF,ELISA
Gene Name	RIPK1 RIP RIP1
Protein Name	Receptor-interacting serine/threonine-protein kinase 1 (Cell death protein RIP) (Receptor-interacting protein 1) (RIP-1) (Serine/threonine-protein kinase RIP)
Purification Process	Protein A
Specificity	Endogenous
Formulation	PBS, 50% glycerol, 0.05% Proclin 300, 0.05%BSA
Source	Monoclonal, Rabbit,IgG
Dilution	IHC 1:200-1000; WB 1:1000-5000; IF 1:200-1000; ELISA 1:5000-20000; Note: For IHC, we suggest antigen retrieval with TE buffer pH 9.0
Concentration	0.5 mg/ml
Purity	≥90%
Storage Stability	-15° C to -25° C/1 year(Do not lower than -25° C)
Synonyms	
Observed Band	76kD
Calculated Molecular Weight	76kD
Cell Pathway	Cytoplasmic, Membranous
Tissue Specificity	Leukemic T-cell,T-cell,Umbilical vein endothelial cell,
Function	Catalytic activity:ATP + a protein = ADP + a phosphoprotein.,Function:Promotes apoptosis and activation of NF-kappa-B. Required for TNFRSF1A mediated activation of NF-kappa-B.,PTM:Autophosphorylated on serine and threonine residues.,PTM:Proteolytically cleaved by caspase-8 during TNF-induced apoptosis. Cleavage abolishes NF-kappa-B activation and enhances pro-apoptotic signaling through the TRADD-FADD interaction.,similarity:Belongs to the protein kinase superfamily. TKL Ser/Thr protein kinase family.,similarity:Contains 1 death domain.,similarity:Contains 1 protein kinase domain.,subunit:Binds to the death domain of TNFRSF6 and TRADD. Is recruited by TRADD to TNFRSF1A in a TNF-dependent process. Binds RIPK3, UBCE7IP1 isoform 3 (ZIN), EGFR, IKBK, TRAF1, TRAF2 and TRAF3. Interacts with BNLF1. Interacts with SQSTM1 upon TNF-alpha stimulation. May interacts with MAVS/IPS1.,





Background

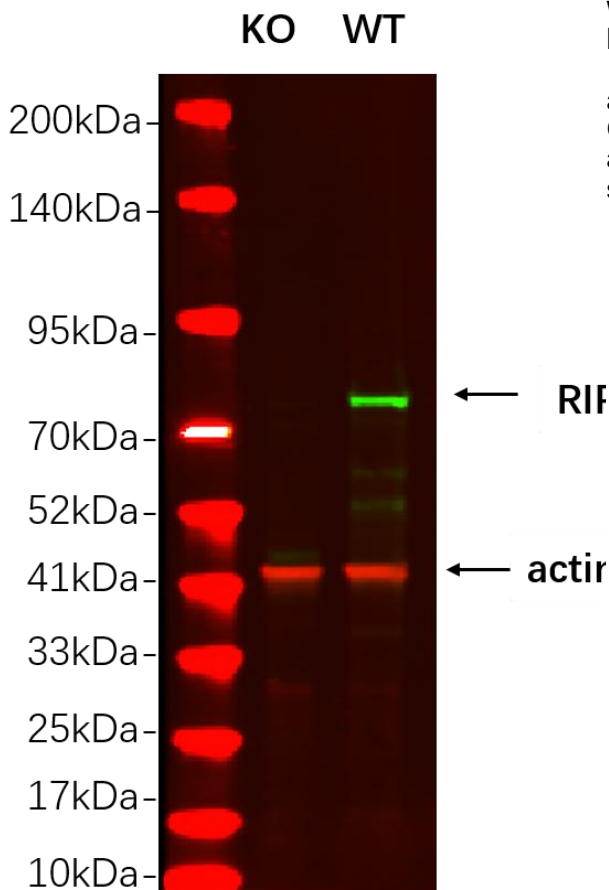
catalytic activity:ATP + a protein = ADP + a phosphoprotein.,function:Promotes apoptosis and activation of NF-kappa-B. Required for TNFRSF1A mediated activation of NF-kappa-B.,PTM:Autophosphorylated on serine and threonine residues.,PTM:Proteolytically cleaved by caspase-8 during TNF-induced apoptosis. Cleavage abolishes NF-kappa-B activation and enhances pro-apoptotic signaling through the TRADD-FADD interaction.,similarity:Belongs to the protein kinase superfamily. TKL Ser/Thr protein kinase family.,similarity:Contains 1 death domain.,similarity:Contains 1 protein kinase domain.,subunit:Binds to the death domain of TNFRSF6 and TRADD. Is recruited by TRADD to TNFRSF1A in a TNF-dependent process. Binds RIPK3, UBCE7IP1 isoform 3 (ZIN), EGFR, IKBKG, TRAF1, TRAF2 and TRAF3. Interacts with BNLF1. Interacts with SQSTM1 upon TNF-alpha stimulation. May interact with MAVS/IPS1.,

matters needing attention

Avoid repeated freezing and thawing!

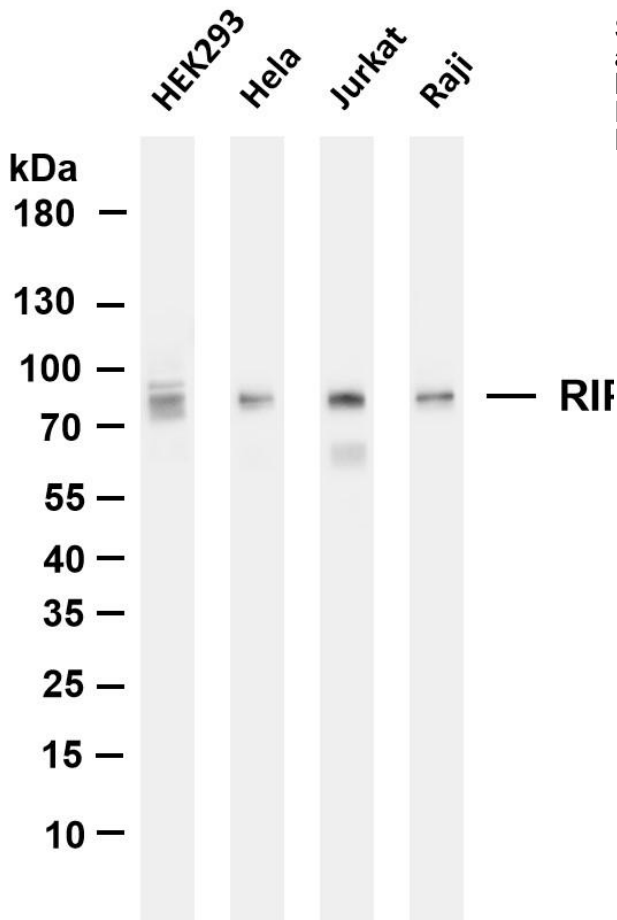
Usage suggestions

This product can be used in immunological reaction related experiments. For more information, please consult technical personnel.

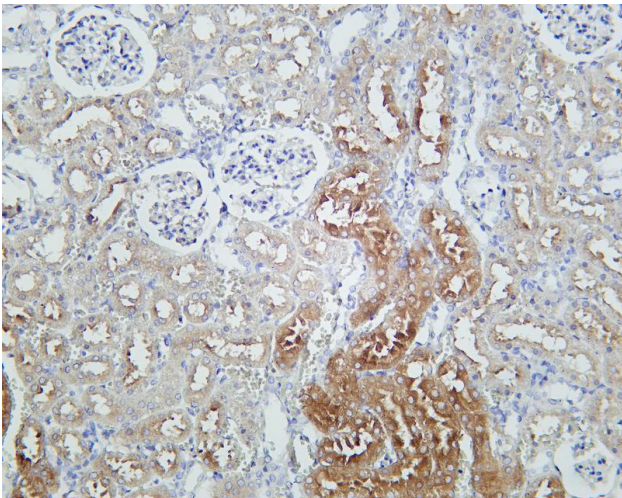


Western blot analysis of lysates from HAP1 WT and knockout cell , (Green) primary antibody was diluted at 1:5000, 4° over night, Dylight 800 secondary antibody was diluted at 1:10000, 37° 1hour. (Red) GAPDH Monoclonal Antibody(5B7) antibody was diluted at 1:5000 as loading control, 4° over night, Dylight 680 secondary antibody was diluted at 1:10000, 37° 1hour.





Various whole cell lysates were separated by 4-20% SDS-PAGE, and the membrane was blotted with anti-RIP antibody. The HRP-conjugated Goat anti-Rabbit IgG(H + L) antibody was used to detect the antibody. Lane 1: HEK293 Lane 2: HeLa Lane 3: Jurkat Lane 4: Raji
Predicted band size: 76kDa Observed band size: 76kDa



Rat kidney was stained with Anti-RIP rabbit antibody

杭州臻优品生物科技有限公司

热销产品:

蛋白、一抗、抗体对、ELISA试剂盒、生化试剂盒
CCK8试剂盒、QPCR检测试剂盒

检测服务:

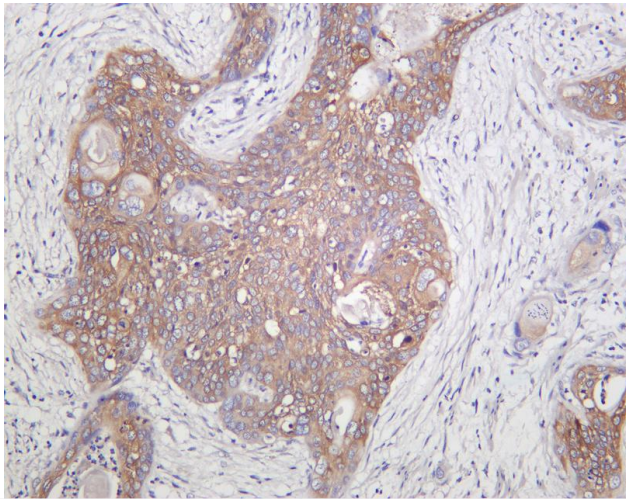
ELISA检测及定制服务 | 生化检测 | PCR、QPCR检测 | WB检测
ICO-IP检测 | 切片 | 染色 | 免疫组化 | 免疫荧光 | 透射电镜全套
| 宏基因组、转录组、基因组、蛋白组、代谢组测序



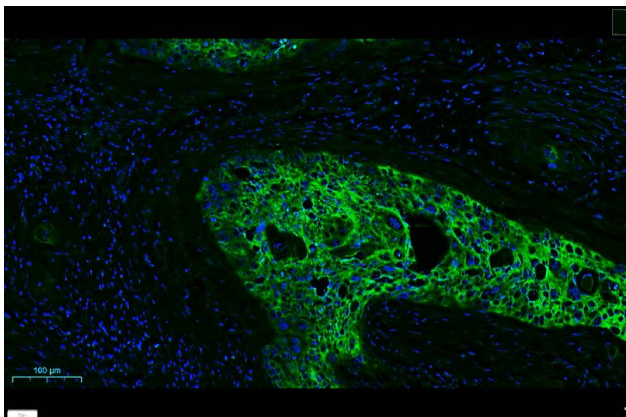
关注官网



关注客服



Human cervical carcinoma was stained with Anti-RIP rabbit antibody



human cervical cancer was stained with Anti-RIP rabbit antibody

杭州臻优品生物科技有限公司

热销产品:

蛋白、一抗、抗体对、ELISA试剂盒、生化试剂盒
CCK8试剂盒、QPCR检测试剂盒

检测服务:

ELISA检测及定制服务 | 生化检测 | PCR、QPCR检测 | WB检测
ICO-IP检测 | 切片 | 染色 | 免疫组化 | 免疫荧光 | 透射电镜全套
| 宏基因组、转录组、基因组、蛋白组、代谢组测序



关注官网



关注客服