



Actin(pan) Rabbit mAb

Catalog No	YP-rAb-18078
Isotype	IgG
Reactivity	Human,Mouse,Rat,Chicken
Applications	WB,IHC,IF,IP,ELISA
Gene Name	ACTC1;ACTA1;ACTA2;ACTB;ACTG1;ACTG2
Protein Name	Actin pan
Purification Process	Protein A
Specificity	This antibody detects endogenous levels of all actins protein.
Formulation	PBS, 50% glycerol, 0.05% Proclin 300, 0.05%BSA
Source	Monoclonal, Rabbit,IgG
Dilution	IHC 1:200-1000; WB 1:5000-20000; IF 1:200-1000; ELISA 1:5000-20000; IP 1:50-200 Note: For IHC, we suggest antigen retrieval with TE buffer pH 9.0
Concentration	0.5 mg/ml
Purity	≥90%
Storage Stability	-15° C to -25° C/1 year(Do not lower than -25° C)
Synonyms	Actin, alpha cardiac muscle 1 ; Alpha-cardiac actin ; ACTC ; Actin, alpha skeletal muscle ; Alpha-actin-1 ; ACTA1 ; Actin, aortic smooth muscle ; Alpha-actin-2 ; ACTA2 ; ACTSA, ACTVS ; Actin, cytoplasmic 1 ; Beta-actin ; ACTB ; Actin, cytoplasmic 2 ; Gamma-actin ; ACTG1 ; ACTG ; Actin, gamma-enteric smooth muscle ; Alpha-actin-3 ; Gamma-2-actin ; Smooth muscle gamma-actin ; ACTA3, ACTL3, ACTSG ; ACTG2
Observed Band	42kD
Calculated Molecular Weight	42kD
Cell Pathway	Cytoplasmic, Membranous
Tissue Specificity	B-cell lymphoma,Brain,Cajal-Retzius cell,Eye,Fetal brain cortex,Foreskin,Hepatocellular car
Function	Disease:Defects in ACTB are a cause of dystonia juvenile-onset (DYTJ) [MIM:607371]. DYTJ is a form of dystonia with juvenile onset. Dystonia is defined by the presence of sustained involuntary muscle contraction, often leading to abnormal postures. DYTJ patients manifest progressive, generalized, dopa-unresponsive dystonia, developmental malformations and sensory hearing loss.,Function:Actins are highly conserved proteins that are involved in various





types of cell motility and are ubiquitously expressed in all eukaryotic cells.,miscellaneous:In vertebrates 3 main groups of actin isoforms, alpha, beta and gamma have been identified. The alpha actins are found in muscle tissues and are a major constituent of the contractile apparatus. The beta and gamma actins coexist in most cell types as components of the cytoskeleton and as mediators of internal cell motility.,similarity:Belongs to the actin family.,subunit:Polymerization of globular actin (G-actin) leads to a structural filament (F-actin) in the form of a two-stranded helix. Each actin can bind to 4 others. Component of the BAF complex, which includes at least actin (ACTB), ARID1A, ARID1B/BAF250, SMARCA2, SMARCA4/BRG1, ACTL6A/BAF53, ACTL6B/BAF53B, SMARCE1/BAF57 SMARCC1/BAF155, SMARCC2/BAF170, SMARCB1/SNF5/INI1, and one or more of SMARCD1/BAF60A, SMARCD2/BAF60B, or SMARCD3/BAF60C. In muscle cells, the BAF complex also contains DPF3. Found in a complex with XPO6, Ran, ACTB and PFN1. Interacts with XPO6.,

Background

Actin, a ubiquitous eukaryotic protein, is the major component of the cytoskeleton. At least six isoforms are known in mammals. Nonmuscle β - and γ -actin, also known as cytoplasmic actin, are ubiquitously expressed, controlling cell structure and motility. While all actin isoforms are highly homologous, cytoplasmic β - and γ -actin protein sequences differ by only four biochemically similar amino acids. For this reason, antibodies raised to β -actin may cross-react with γ -actin, and vice versa. α -cardiac and α -skeletal actin are expressed in striated cardiac and skeletal muscles, respectively; two smooth muscle actins, α - and γ -actin, are found primarily in vascular smooth muscle and enteric smooth muscle, respectively. These actin isoforms regulate the contractile potential of muscle cells. Actin exists mainly as a fibrous polymer, F-actin. In response to cytoskeletal reorganizing signals during processes such as cytokinesis, endocytosis, or stress, cofilin promotes fragmentation and depolymerization of F-actin, resulting in an increase in the monomeric globular form, G-actin. The ARP2/3 complex stabilizes F-actin fragments and promotes formation of new actin filaments. Research studies have shown that actin is hyperphosphorylated in primary breast tumors. Cleavage of actin under apoptotic conditions has been observed in vitro and in cardiac and skeletal muscle, as shown in research studies. Actin cleavage by caspase-3 may accelerate ubiquitin/proteasome-dependent muscle proteolysis.

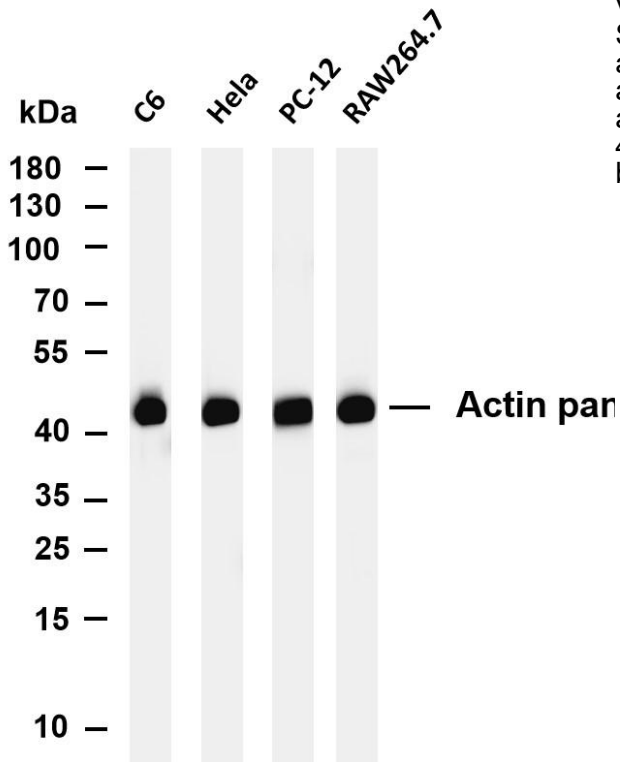
matters needing attention

Avoid repeated freezing and thawing!

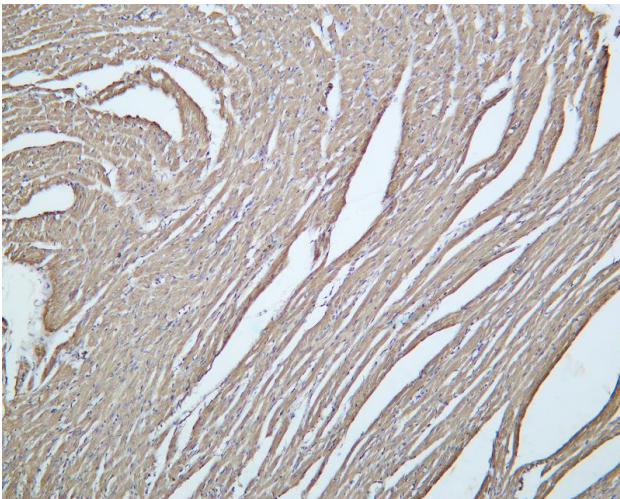
Usage suggestions

This product can be used in immunological reaction related experiments. For more information, please consult technical personnel.

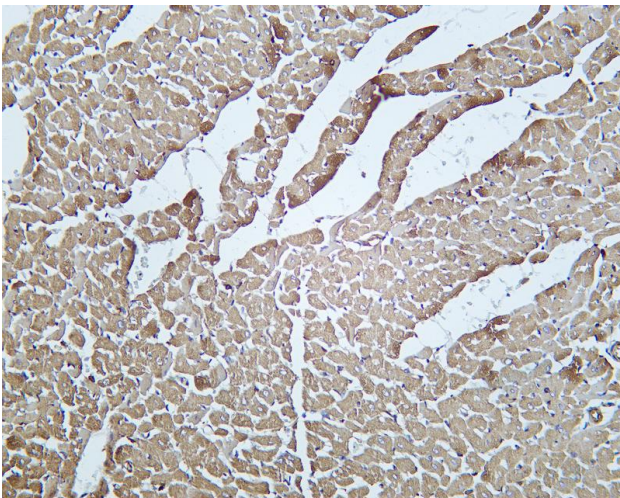




Various whole cell lysates were separated by 4-20% SDS-PAGE, and the membrane was blotted with anti-Actin pan antibody. The HRP-conjugated Goat anti-Rabbit IgG(H + L) antibody was used to detect the antibody. Lane 1: C6 Lane 2: HeLa Lane 3: PC-12 Lane 4: RAW264.7 Predicted band size: 42kDa Observed band size: 42kDa



Mouse heart was stained with Anti-Actin pan rabbit antibody



Rat heart was stained with Anti-Actin pan rabbit antibody

杭州臻优品生物科技有限公司

热销产品:

蛋白、一抗、抗体对、ELISA试剂盒、生化试剂盒
CCK8试剂盒、QPCR检测试剂盒

检测服务:

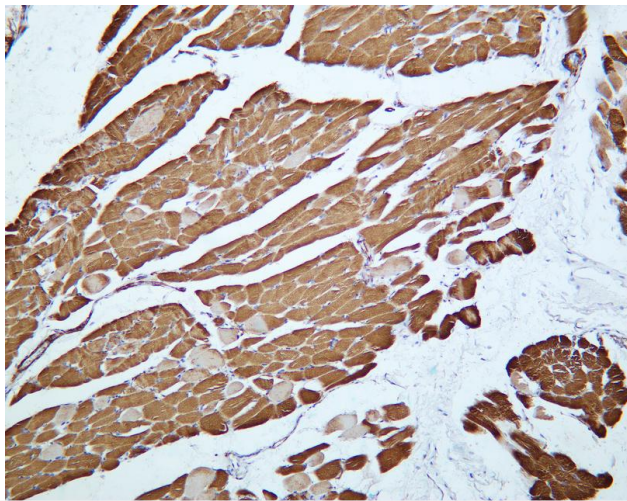
ELISA检测及定制服务 | 生化检测 | PCR、QPCR检测 | WB检测
ICO-IP检测 | 切片 | 染色 | 免疫组化 | 免疫荧光 | 透射电镜全套
| 宏基因组、转录组、基因组、蛋白组、代谢组测序



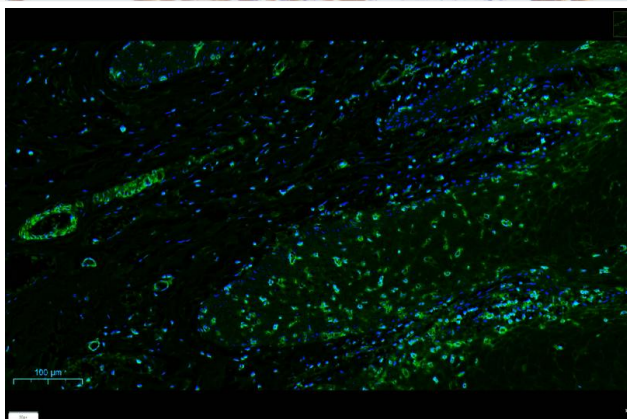
关注官网



关注客服



Human skeletal muscle was stained with Anti-Actin pan rabbit antibody



human skeletal muscle was stained with Anti-Actin pan rabbit antibody

杭州臻优品生物科技有限公司

热销产品:

蛋白、一抗、抗体对、ELISA试剂盒、生化试剂盒
CCK8试剂盒、QPCR检测试剂盒

检测服务:

ELISA检测及定制服务 | 生化检测 | PCR、QPCR检测 | WB检测
ICO-IP检测 | 切片 | 染色 | 免疫组化 | 免疫荧光 | 透射电镜全套
| 宏基因组、转录组、基因组、蛋白组、代谢组测序



关注官网



关注客服