



Hexokinase II Rabbit mAb

Catalog No	YP-rAb-18063
Isotype	IgG
Reactivity	Human,Mouse,Rat
Applications	WB,IHC,IF,IP,ELISA
Gene Name	HK2
Protein Name	Hexokinase-2
Purification Process	Protein A
Specificity	Endogenous
Formulation	PBS, 50% glycerol, 0.05% Proclin 300, 0.05%BSA
Source	Monoclonal, Rabbit,IgG
Dilution	IHC 1:200-400; WB 1:1000-5000; IF 1:200-1000; ELISA 1:5000-20000; IP 1:50-200 Note: For IHC, we suggest antigen retrieval with TE buffer pH 9.0
Concentration	0.5 mg/ml
Purity	≥90%
Storage Stability	-15° C to -25° C/1 year(Do not lower than -25° C)
Synonyms	HK2 ; Hexokinase-2 ; Hexokinase type II ; HK II ; Muscle form hexokinase
Observed Band	102kD
Calculated Molecular Weight	102kD
Cell Pathway	Cytoplasm
Tissue Specificity	Predominant hexokinase isozyme expressed in insulin-responsive tissues such as skeletal muscle.
Function	Catalytic activity:ATP + D-hexose = ADP + D-hexose 6-phosphate.,Domain:The N- and C-terminal halves of this hexokinase show extensive sequence similarity to each other. The catalytic activity is associated with the C-terminus while regulatory function is associated with the N-terminus.,enzyme regulation:Hexokinase is an allosteric enzyme inhibited by its product Glc-6-P.,miscellaneous:In vertebrates there are four major glucose-phosphorylating isoenzymes, designated hexokinase I, II, III and IV (glucokinase).,online information:Hexokinase entry,pathway:Carbohydrate metabolism; hexose metabolism.,polymorphism:Although found in NIDDM patients, genetic variations of HK2 do not contribute to the disease.,similarity:Belongs to the hexokinase family.,subcellular location:Its hydrophobic N-terminal sequence may be involved in membrane binding.,subunit:Monomer.,tissue specificity:Predominant hexokinase isozyme





expressed in insulin-responsive tissues such as skeletal muscle.,

Background

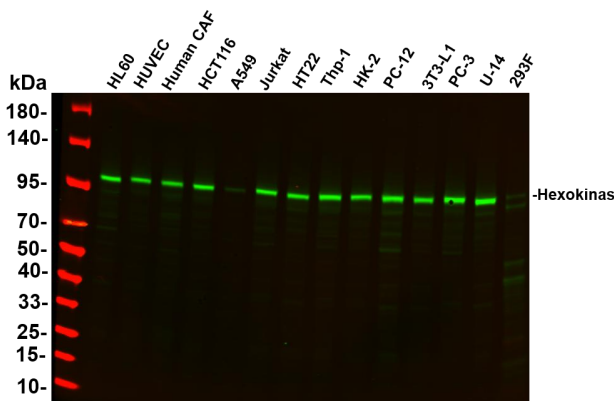
Hexokinases phosphorylate glucose to produce glucose-6-phosphate, the first step in most glucose metabolism pathways. This gene encodes hexokinase 2, the predominant form found in skeletal muscle. It localizes to the outer membrane of mitochondria. Expression of this gene is insulin-responsive, and studies in rat suggest that it is involved in the increased rate of glycolysis seen in rapidly growing cancer cells. [provided by RefSeq, Apr 2009],

matters needing attention

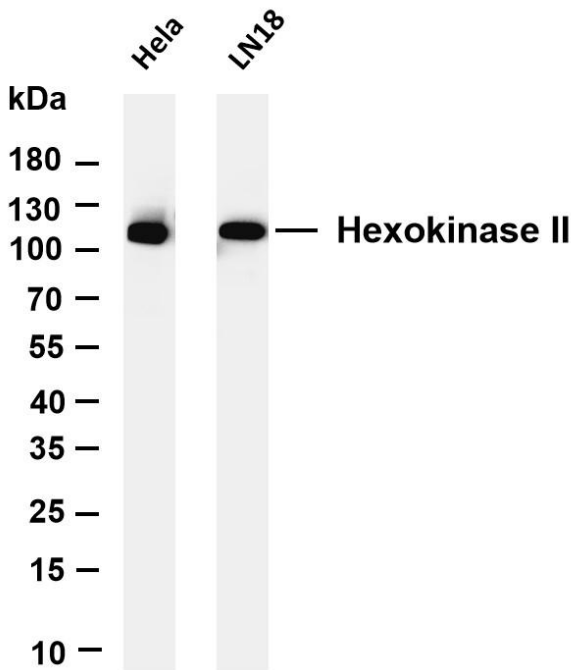
Avoid repeated freezing and thawing!

Usage suggestions

This product can be used in immunological reaction related experiments. For more information, please consult technical personnel.

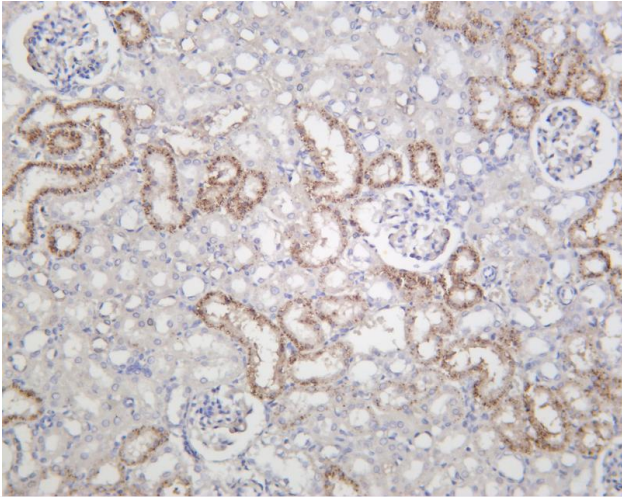


Various whole cell lysates were separated by 4-20% SDS-PAGE, and the primary antibody was used at 4°C, over night with a 1:2500 dilution. The Dylight 800-conjugated Goat anti-Rabbit antibody

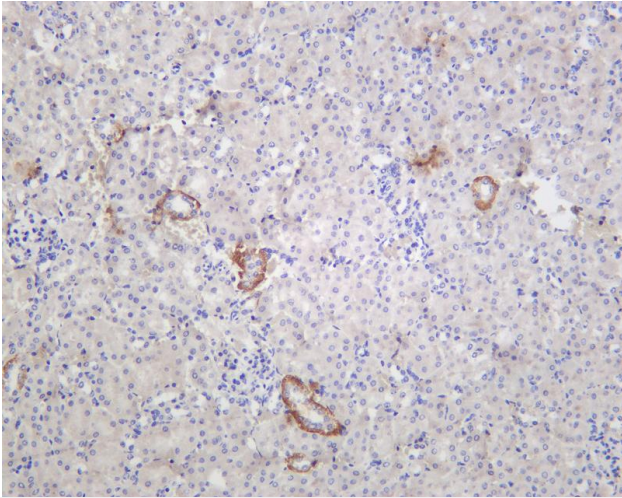


Various whole cell lysates were separated by 4-20% SDS-PAGE, and the membrane was blotted with anti-Hexokinase II antibody. The HRP-conjugated Goat anti-Rabbit IgG(H + L) antibody was used to detect the antibody. Lane 1: HeLa Lane 2: LN18 Predicted band size: 102kDa Observed band size: 102kDa

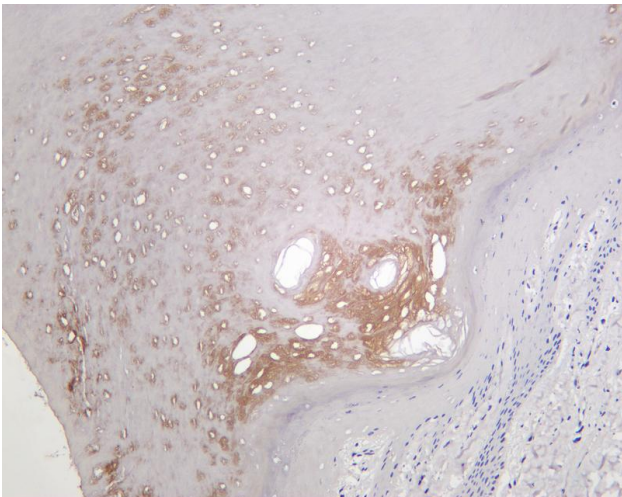




Rat kidney was stained with Anti-Hexokinase II rabbit antibody



Mouse kidney was stained with Anti-Hexokinase II rabbit antibody



Human skin was stained with Anti-Hexokinase II rabbit antibody

杭州臻优品生物科技有限公司

热销产品:

蛋白、一抗、抗体对、ELISA试剂盒、生化试剂盒
CCK8试剂盒、QPCR检测试剂盒

检测服务:

ELISA检测及定制服务 | 生化检测 | PCR、QPCR检测 | WB检测
ICO-IP检测 | 切片 | 染色 | 免疫组化 | 免疫荧光 | 透射电镜全套
| 宏基因组、转录组、基因组、蛋白组、代谢组测序



关注官网



关注客服