



EEA1 Rabbit mAb

Catalog No	YP-rAb-18062
Isotype	IgG
Reactivity	Human,Mouse,Rat
Applications	WB,IHC,IF,ELISA
Gene Name	EEA1
Protein Name	Early endosome antigen 1
Purification Process	Protein A
Specificity	Endogenous
Formulation	PBS, 50% glycerol, 0.05% Proclin 300, 0.05%BSA
Source	Monoclonal, Rabbit,IgG
Dilution	IHC 1:100-200; WB 1:1000-5000; IF 1:200-1000; ELISA 1:5000-20000; Note: For IHC, we suggest antigen retrieval with TE buffer pH 9.0
Concentration	0.5 mg/ml
Purity	≥90%
Storage Stability	-15° C to -25° C/1 year(Do not lower than -25° C)
Synonyms	EEA1 ; ZFYVE2 ; Early endosome antigen 1 ; Endosome-associated protein p162 ; Zinc finger FYVE domain-containing protein 2
Observed Band	162kD
Calculated Molecular Weight	162kD
Cell Pathway	Cytoplasm
Tissue Specificity	Aorta,Cervix carcinoma,Fetal brain cortex,Skeletal muscle,
Function	Disease:Antibodies against EEA1 are found in sera from patients with subacute cutaneous lupus erythematosus and other autoimmune diseases.,Domain:The FYVE-type zinc finger domain mediates interactions with phosphatidylinositol 3-phosphate.,Function:Binds phospholipid vesicles containing phosphatidylinositol 3-phosphate and participates in endosomal trafficking.,similarity:Contains 1 C2H2-type zinc finger.,similarity:Contains 1 FYVE-type zinc finger.,subunit:Homodimer. Binds STX6. Binds RAB5A, RAB5B, RAB5C and RAB22A that have been activated by GTP-binding.,
Background	disease:Antibodies against EEA1 are found in sera from patients with subacute cutaneous lupus erythematosus and other autoimmune diseases.,domain:The FYVE-type zinc finger domain mediates interactions with phosphatidylinositol 3-phosphate.,function:Binds phospholipid vesicles containing phosphatidylinositol

杭州臻优品生物科技有限公司

热销产品:

蛋白、一抗、抗体对、ELISA试剂盒、生化试剂盒
CCK8试剂盒、QPCR检测试剂盒

检测服务:

ELISA检测及定制服务 | 生化检测 | PCR、QPCR检测 | WB检测
| CO-IP检测 | 切片 | 染色 | 免疫组化 | 免疫荧光 | 透射电镜全套
| 宏基因组、转录组、基因组、蛋白组、代谢组测序



关注官网



关注客服



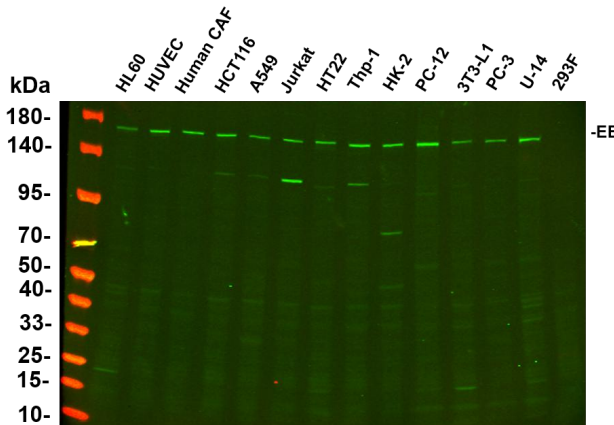
3-phosphate and participates in endosomal trafficking.,similarity:Contains 1 C2H2-type zinc finger.,similarity:Contains 1 FYVE-type zinc finger.,subunit:Homodimer. Binds STX6. Binds RAB5A, RAB5B, RAB5C and RAB22A that have been activated by GTP-binding.,

matters needing attention

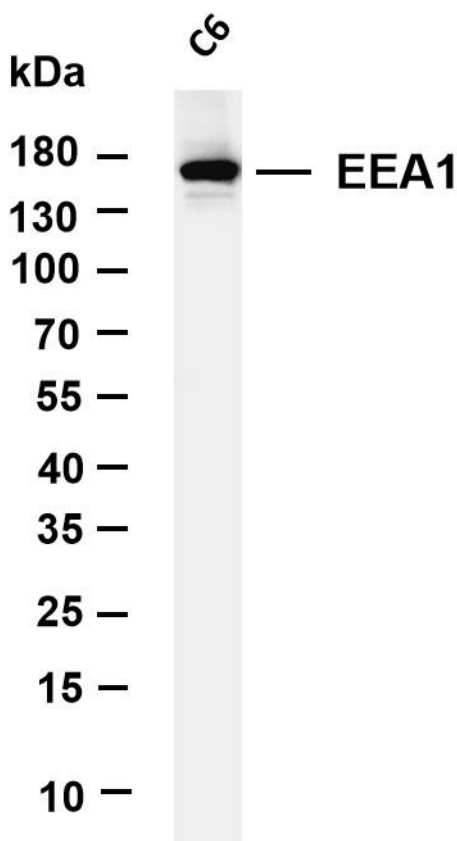
Avoid repeated freezing and thawing!

Usage suggestions

This product can be used in immunological reaction related experiments. For more information, please consult technical personnel.

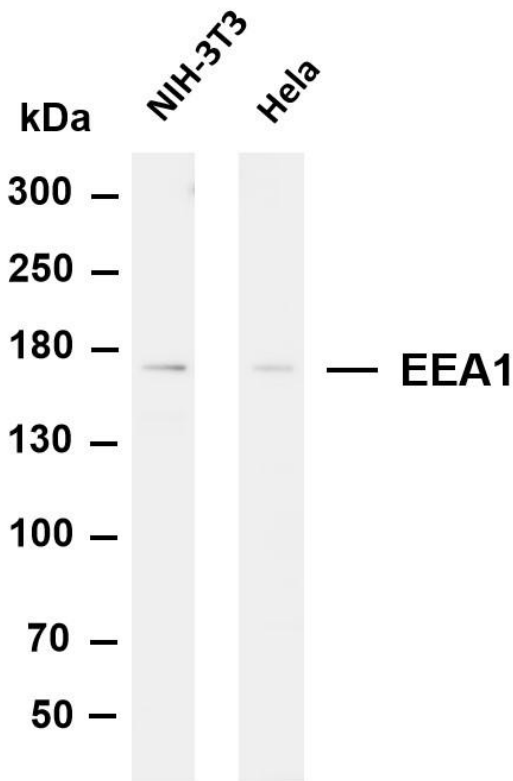


Various whole cell lysates were separated by 4-20% SDS-PAGE, and the primary antibody was used at 4°C, over night with a 1:2500 dilution. The Dylight 800-conjugated Goat anti-Rabbit antibody

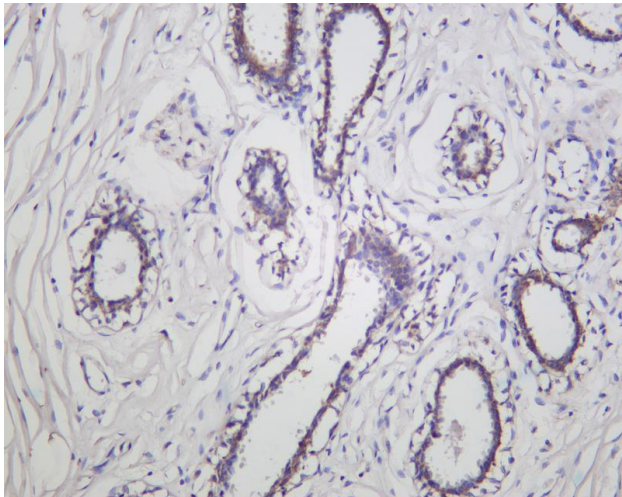


Various whole cell lysates were separated by 4-20% SDS-PAGE, and the membrane was blotted with anti-EEA1 antibody. The HRP-conjugated Goat anti-Rabbit IgG(H + L) antibody was used to detect the antibody. Lane 1: C6 Predicted band size: 162kDa Observed band size: 162kDa





Various whole cell lysates were separated by 4-8% SDS-PAGE, and the membrane was blotted with anti-EEA1 antibody. The HRP-conjugated Goat anti-Rabbit IgG(H + L) antibody was used to detect the antibody. Lane 1: NIH-3T3 Lane 2: HeLa Predicted band size: 162kDa Observed band size: 162kDa



Human ductal breast carcinoma was stained with Anti-EEA1 rabbit antibody

杭州臻优品生物科技有限公司

热销产品:

蛋白、一抗、抗体对、ELISA试剂盒、生化试剂盒
CCK8试剂盒、QPCR检测试剂盒

检测服务:

ELISA检测及定制服务 | 生化检测 | PCR、QPCR检测 | WB检测
ICO-IP检测 | 切片 | 染色 | 免疫组化 | 免疫荧光 | 透射电镜全套
| 宏基因组、转录组、基因组、蛋白组、代谢组测序



关注官网



关注客服