



Lactate Dehydrogenase Rabbit mAb

Catalog No	YP-rAb-18061
Isotype	IgG
Reactivity	Human,Mouse,Rat
Applications	WB,IHC,IF,IP,ELISA
Gene Name	LDHA;PIG19;LDHB;LDHC;LDH3;LDHX;
Protein Name	L-lactate dehydrogenase A chain;LDH-A;Cell proliferation-inducing gene 19 protein;LDH muscle subunit;LDH-M;Renal carcinoma antigen NY-REN-59;L-lactate dehydrogenase B chain;LDH-B;LDH heart subunit;LDH-H;Renal carcinoma antigen NY-REN-46;L-lactate dehydrogenase C chain;LDH-C;Cancer/testis antigen 32;CT32;LDH testis subunit;LDH-X;
Purification Process	Protein A
Specificity	Endogenous
Formulation	PBS, 50% glycerol, 0.05% Proclin 300, 0.05%BSA
Source	Monoclonal, Rabbit,IgG
Dilution	IHC 1:1000-3000; WB 1:1000-5000; IF 1:200-1000; ELISA 1:5000-20000; IP 1:50-200 Note: For IHC, we suggest antigen retrieval with TE buffer pH 9.0
Concentration	0.5 mg/ml
Purity	≥90%
Storage Stability	-15° C to -25° C/1 year(Do not lower than -25° C)
Synonyms	LDHA ; PIG19 ; LDHB ; LDHC ; LDH3 ; LDHX ; L-lactate dehydrogenase A chain ; LDH-A ; Cell proliferation-inducing gene 19 protein ; LDH muscle subunit ; LDH-M ; Renal carcinoma antigen NY-REN-59 ; L-lactate dehydrogenase B chain ; LDH-B ; LDH heart subunit ; LDH-H ; Renal carcinoma antigen NY-REN-46 ; L-lactate dehydrogenase C chain ; LDH-C ; Cancer/testis antigen 32 ; CT32 ; LDH testis subunit ; LDH-X ;
Observed Band	37kD
Calculated Molecular Weight	37kD
Cell Pathway	Cytoplasmic, Membranous
Tissue Specificity	Predominantly expressed in anaerobic tissues such as skeletal muscle and liver.
Function	Catalytic activity:(S)-lactate + NAD(+) = pyruvate + NADH.,Caution:The sequence shown here is derived from an Ensembl automatic analysis pipeline and should be considered as preliminary data.,Disease:Defects in LDHA are a cause of





exertional myoglobinuria.,online information:Lactate dehydrogenase entry,pathway:Fermentation; pyruvate fermentation to lactate; (S)-lactate from pyruvate: step 1/1.,similarity:Belongs to the LDH/MDH superfamily.,similarity:Belongs to the LDH/MDH superfamily. LDH family.,subunit:Homotetramer.,

Background

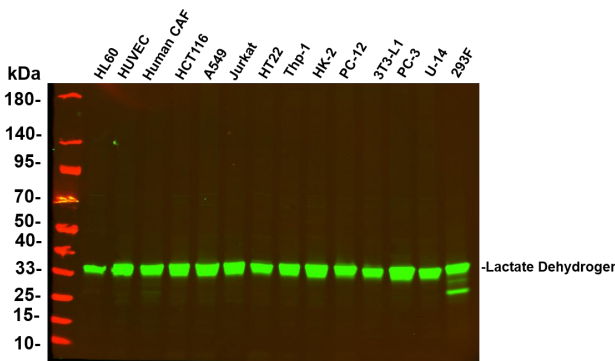
The protein encoded by this gene catalyzes the conversion of L-lactate and NAD to pyruvate and NADH in the final step of anaerobic glycolysis. The protein is found predominantly in muscle tissue and belongs to the lactate dehydrogenase family. Mutations in this gene have been linked to exertional myoglobinuria. Multiple transcript variants encoding different isoforms have been found for this gene. The human genome contains several non-transcribed pseudogenes of this gene. [provided by RefSeq, Sep 2008],

matters needing attention

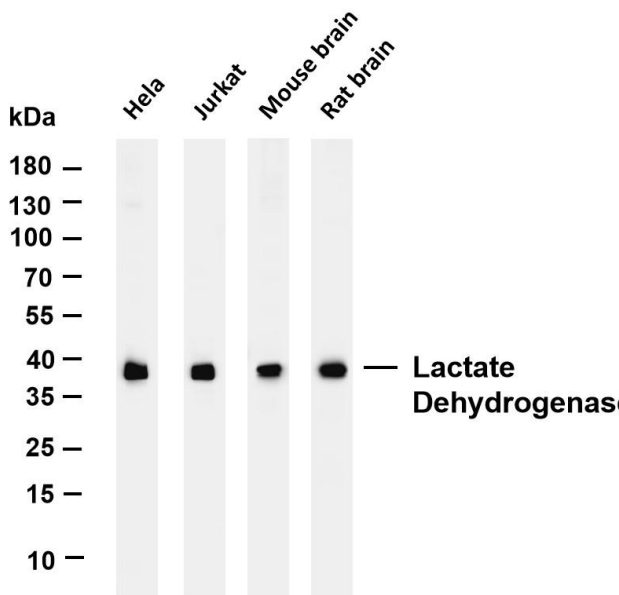
Avoid repeated freezing and thawing!

Usage suggestions

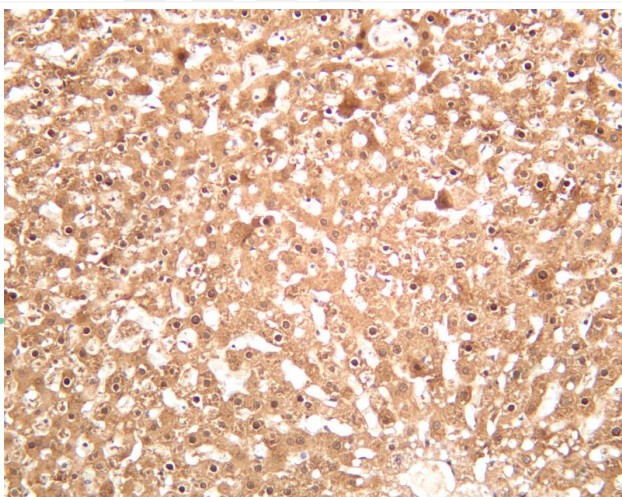
This product can be used in immunological reaction related experiments. For more information, please consult technical personnel.



Various whole cell lysates were separated by 4-20% SDS-PAGE, and the primary antibody was used at 4°C, over night with a 1:2500 dilution . The Dylight 800-conjugated Goat anti-Rabbit antibody

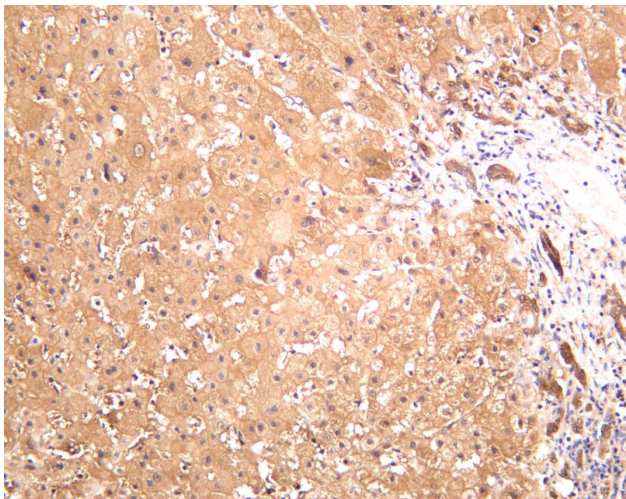


Various whole cell lysates were separated by 4-20% SDS-PAGE, and the membrane was blotted with anti-Lactate Dehydrogenase antibody. The HRP-conjugated Goat anti-Rabbit IgG(H + L) antibody was used to detect the antibody. Lane 1: HeLa Lane 2: Jurkat Lane 3: Mouse brain Lane 4: Rat brain Predicted band size: 37kDa Observed band size: 37kDa

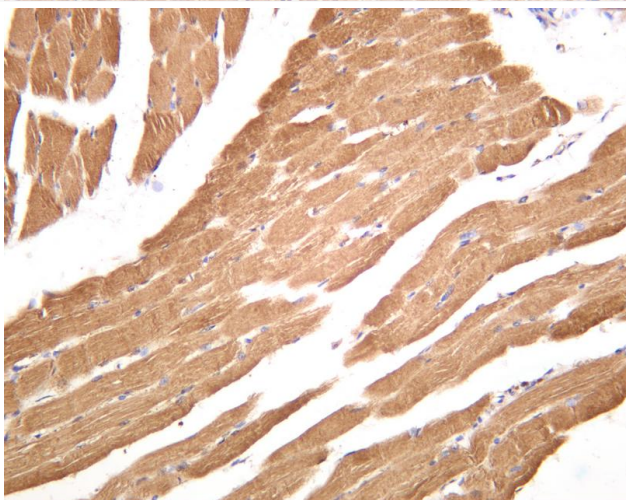


Rat liver was stained with anti-Lactate Dehydrogenase rabbit antibody





Human liver was stained with anti-Lactate Dehydrogenase rabbit antibody



Human skeletal muscle was stained with anti-Lactate Dehydrogenase rabbit antibody

杭州臻优品生物科技有限公司

热销产品:

蛋白、一抗、抗体对、ELISA试剂盒、生化试剂盒
CCK8试剂盒、QPCR检测试剂盒

检测服务:

ELISA检测及定制服务 | 生化检测 | PCR、QPCR检测 | WB检测
ICO-IP检测 | 切片 | 染色 | 免疫组化 | 免疫荧光 | 透射电镜全套
| 宏基因组、转录组、基因组、蛋白组、代谢组测序



关注官网



关注客服