



Polycomb Protein SUZ12 Rabbit mAb

Catalog No	YP-rAb-18043
Isotype	IgG
Reactivity	Human,Mouse,Rat
Applications	WB,IHC,IF,IP,ELISA
Gene Name	SUZ12
Protein Name	Polycomb protein SUZ12
Purification Process	Protein A
Specificity	Endogenous
Formulation	PBS, 50% glycerol, 0.05% Proclin 300, 0.05%BSA
Source	Monoclonal, Rabbit,IgG
Dilution	IHC 1:200-1000; WB 1:1000-5000; IF 1:200-1000; ELISA 1:5000-20000; IP 1:50-200 Note: For IHC, we suggest antigen retrieval with TE buffer pH 9.0
Concentration	0.5 mg/ml
Purity	≥90%
Storage Stability	-15° C to -25° C/1 year(Do not lower than -25° C)
Synonyms	SUZ12 ; CHET9 ; JJAZ1 ; KIAA0160 ; Polycomb protein SUZ12 ; Chromatin precipitated E2F target 9 protein ; ChET 9 protein ; Joined to JAZF1 protein ; Suppressor of zeste 12 protein homolog
Observed Band	83kD
Calculated Molecular Weight	83kD
Cell Pathway	Nucleus
Tissue Specificity	Overexpressed in breast and colon cancer.
Function	Caution:Two variants of the PRC2 complex have been described, termed PRC3 and PRC4. Each of the three complexes may include a different complement of EED isoforms, although the precise sequences of the isoforms in each complex have not been determined. The PRC2 and PRC4 complexes may also methylate 'Lys-26' of histone H1 in addition to 'Lys-27' of histone H3 (PubMed:15099518 and PubMed:15684044), although other studies have demonstrated no methylation of 'Lys-26' of histone H1 by PRC2 (PubMed:16431907).,developmental stage:Expressed at low levels in quiescent cells. Expression rises at the G1/S phase transition.,Disease:A chromosomal aberration involving SUZ12 may be a cause of endometrial stromal tumors. Translocation t(7;17)(p15;q21) with JAZF1. The translocation generates the JAZF1-SUZ12 oncogene consisting of the

杭州臻优品生物科技有限公司

热销产品:

蛋白、一抗、抗体对、ELISA试剂盒、生化试剂盒
CCK8试剂盒、QPCR检测试剂盒

检测服务:

ELISA检测及定制服务 | 生化检测 | PCR、QPCR检测 | WB检测
ICO-IP检测 | 切片 | 染色 | 免疫组化 | 免疫荧光 | 透射电镜全套
| 宏基因组、转录组、基因组、蛋白组、代谢组测序



关注官网



关注客服



N-terminus part of JAZF1 and the C-terminus part of SUZ12. It is frequently found in all cases of endometrial stromal tumors, except in endometrial stromal sarcomas, where it is rarer. Function: Polycomb group (PcG) protein. Component of the PRC2/EED-EZH2 complex, which methylates 'Lys-9' and 'Lys-27' of histone H3, leading to transcriptional repression of the affected target gene. The PRC2/EED-EZH2 complex may also serve as a recruiting platform for DNA methyltransferases, thereby linking two epigenetic repression systems. Genes repressed by the PRC2/EED-EZH2 complex include HOXC8, HOXA9, MYT1 and CDKN2A. induction: Expression is induced by E2F1, E2F2 and E2F3. similarity: Belongs to the VEFS (VRN2-EMF2-FIS2-SU(Z)12) family. Contains 1 C2H2-type zinc finger. subunit: Component of the PRC2/EED-EZH2 complex, which includes EED, EZH2, SUZ12, RBBP4 and RBBP7 and possibly AEBP2. The minimum components required for methyltransferase activity of the PRC2/EED-EZH2 complex are EED, EZH2 and SUZ12. Component of the PRC2/EED-EZH1 complex, which includes EED, EZH1, SUZ12, RBBP4 and AEBP2. The PRC2 complex may also interact with DNMT1, DNMT3A, DNMT3B and PHF1 via the EZH2 subunit and with SIRT1 via the SUZ12 subunit. Interacts with WDR77. Interacts with histone H1. tissue specificity: Overexpressed in breast and colon cancer.

Background

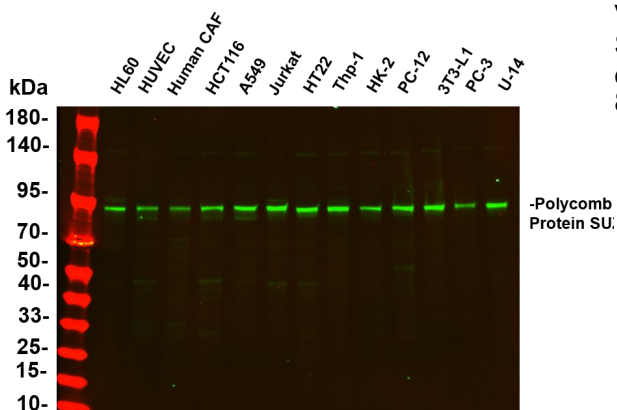
This zinc finger gene has been identified at the breakpoints of a recurrent chromosomal translocation reported in endometrial stromal sarcoma. Recombination of these breakpoints results in the fusion of this gene and JAZF1. The protein encoded by this gene contains a zinc finger domain in the C terminus of the coding region. [provided by RefSeq, Jul 2009],

matters needing attention

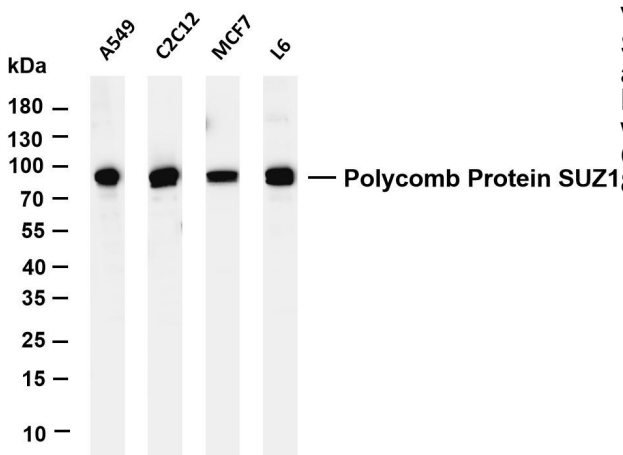
Avoid repeated freezing and thawing!

Usage suggestions

This product can be used in immunological reaction related experiments. For more information, please consult technical personnel.

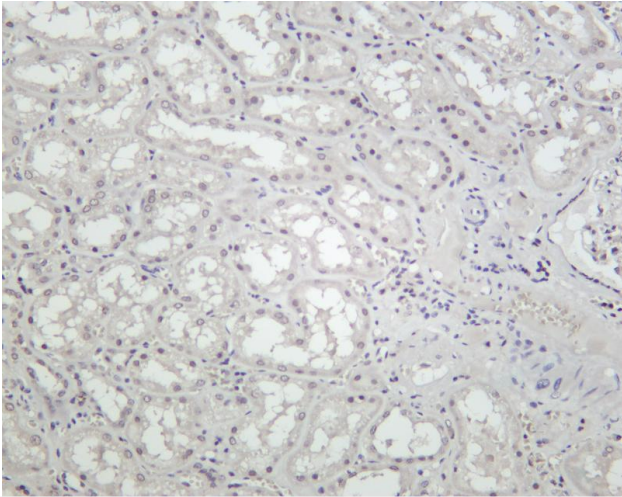


Various whole cell lysates were separated by 4-20% SDS-PAGE, and the primary antibody was used at 4°C, over night with a 1:2500 dilution. The Dylight 800-conjugated Goat anti-Rabbit antibody

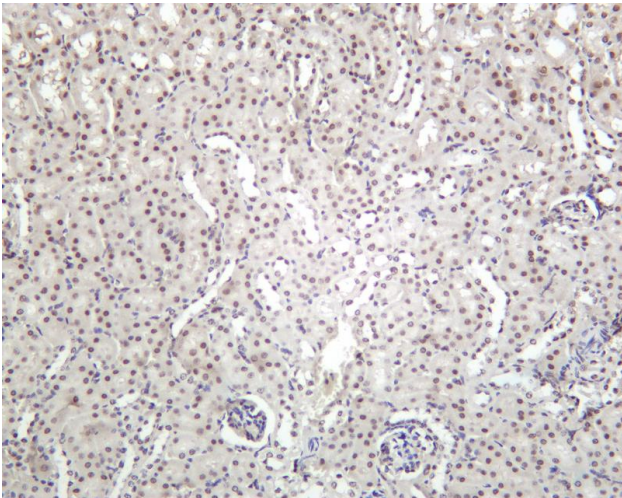


Various whole cell lysates were separated by 4-20% SDS-PAGE, and the membrane was blotted with anti-Polycomb Protein SUZ12 antibody. The HRP-conjugated Goat anti-Rabbit IgG(H + L) antibody was used to detect the antibody. Lane 1: A549 Lane 2: C2C12 Lane 3: MCF7 Lane 4: L6 Predicted band size: 183kDa Observed band size: 83kDa

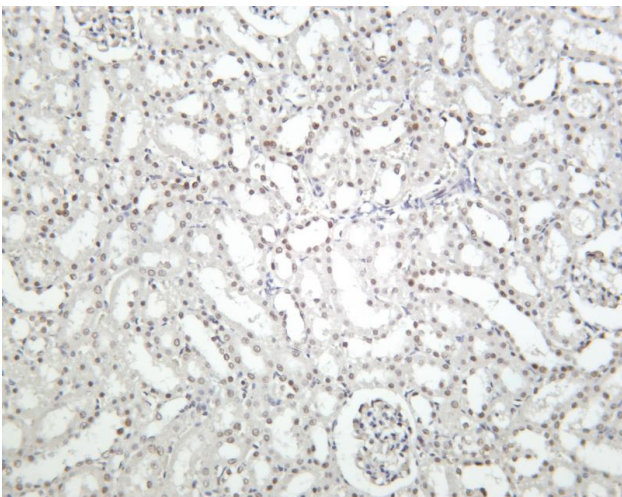




Human kidney was stained with Anti-Polycomb Protein SUZ12 rabbit antibody



Mouse kidney was stained with Anti-Polycomb Protein SUZ12 rabbit antibody



Rat kidney was stained with Anti-Polycomb Protein SUZ12 rabbit antibody

