



CTGF Rabbit mAb

Catalog No	YP-rAb-18042
Isotype	IgG
Reactivity	Human,Mouse,Rat
Applications	WB,IP,IF,ELISA
Gene Name	CTGF CCN2 HCS24 IGFBP8
Protein Name	Connective tissue growth factor (CCN family member 2) (Hypertrophic chondrocyte-specific protein 24) (Insulin-like growth factor-binding protein 8) (IBP-8) (IGF-binding protein 8) (IGFBP-8)
Purification Process	Protein A
Specificity	Endogenous
Formulation	PBS, 50% glycerol, 0.05% Proclin 300, 0.05%BSA
Source	Monoclonal, Rabbit,IgG
Dilution	WB 1:500-2000; ELISA 1:5000-20000; IP 1:50-200; IF 1:200-1:1000;
Concentration	0.5 mg/ml
Purity	≥90%
Storage Stability	-15° C to -25° C/1 year(Do not lower than -25° C)
Synonyms	CTGF ; CCN2 ; HCS24 ; IGFBP8 ; Connective tissue growth factor ; CCN family member 2 ; Hypertrophic chondrocyte-specific protein 24 ; Insulin-like growth factor-binding protein 8 ; IBP-8 ; IGF-binding protein 8 ; IGFBP-8
Observed Band	38kD
Calculated Molecular Weight	38kD
Cell Pathway	Secreted
Tissue Specificity	Expressed in bone marrow and thymic cells. Also expressed one of two Wilms tumors tested.
Function	Major connective tissue mitoattractant secreted by vascular endothelial cells. Promotes proliferation and differentiation of chondrocytes. Mediates heparin- and divalent cation-dependent cell adhesion in many cell types including fibroblasts, myofibroblasts, endothelial and epithelial cells. Enhances fibroblast growth factor-induced DNA synthesis.,similarity:Belongs to the CCN family.,similarity:Contains 1 CTCK (C-terminal cystine knot-like) domain.,similarity:Contains 1 IGFBP N-terminal domain.,similarity:Contains 1 TSP type-1 domain.,similarity:Contains 1 VWFC domain.,subunit:Monomer.,





Background

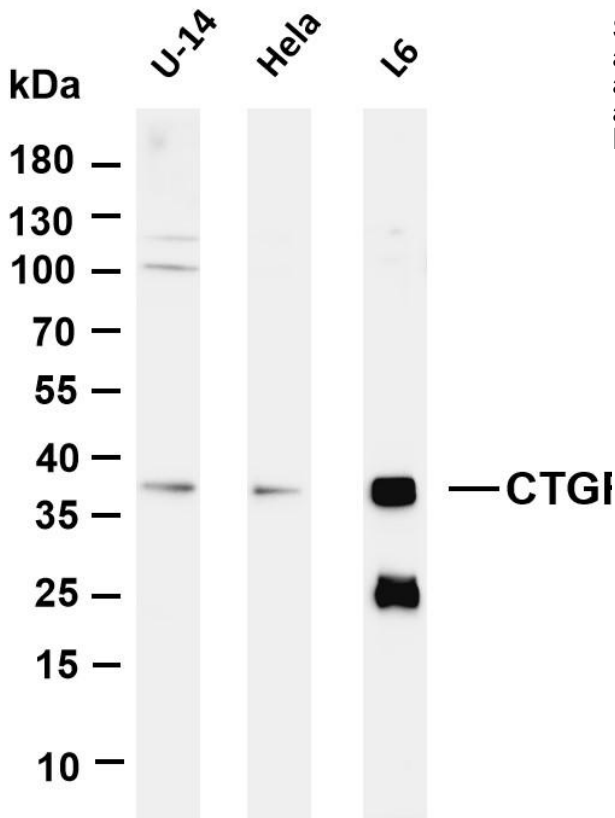
The protein encoded by this gene is a mitogen that is secreted by vascular endothelial cells. The encoded protein plays a role in chondrocyte proliferation and differentiation, cell adhesion in many cell types, and is related to platelet-derived growth factor. Certain polymorphisms in this gene have been linked with a higher incidence of systemic sclerosis. [provided by RefSeq, Nov 2009],

matters needing attention

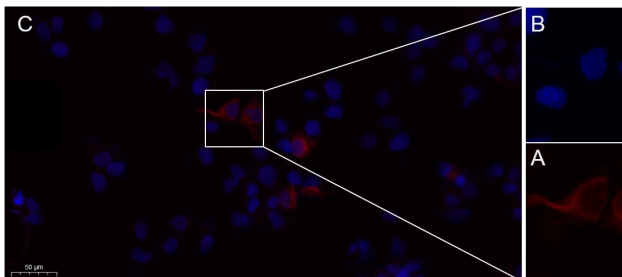
Avoid repeated freezing and thawing!

Usage suggestions

This product can be used in immunological reaction related experiments. For more information, please consult technical personnel.



Various whole cell lysates were separated by 4-20% SDS-PAGE, and the membrane was blotted with anti-CTGF antibody. The HRP-conjugated Goat anti-Rabbit IgG(H + L) antibody was used to detect the antibody. Lane 1: U-14 Lane 2: HeLa Lane 3: L6
Predicted band size: 38kDa Observed band size: 38kDa



Immunofluorescence analysis of HepG2. Picture A: CTGF rabbit mAb (red). Picture B: DAPI (blue). Picture C: Merge of A+B

杭州臻优品生物科技有限公司

热销产品:

蛋白、一抗、抗体对、ELISA试剂盒、生化试剂盒
CCK8试剂盒、QPCR检测试剂盒

检测服务:

ELISA检测及定制服务 | 生化检测 | PCR、QPCR检测 | WB检测
ICO-IP检测 | 切片 | 染色 | 免疫组化 | 免疫荧光 | 透射电镜全套
| 宏基因组、转录组、基因组、蛋白组、代谢组测序



关注官网



关注客服