



Clathrin Heavy Chain 1 Rabbit mAb

Catalog No	YP-rAb-18040
Isotype	IgG
Reactivity	Human,Mouse,Rat
Applications	WB,IHC,IF,ELISA
Gene Name	CLTC CLH17 CLTCL2 KIAA0034
Protein Name	Clathrin heavy chain 1 (Clathrin heavy chain on chromosome 17) (CLH-17)
Purification Process	Protein A
Specificity	Endogenous
Formulation	PBS, 50% glycerol, 0.05% Proclin 300, 0.05%BSA
Source	Monoclonal, Rabbit,IgG
Dilution	IHC 1:50-200; WB 1:500-1:2000; IF 1:200-1000; ELISA 1:5000-20000 Note: For IHC, we suggest antigen retrieval with TE buffer pH 9.0
Concentration	0.5 mg/ml
Purity	≥90%
Storage Stability	-15° C to -25° C/1 year(Do not lower than -25° C)
Synonyms	
Observed Band	180kD
Calculated Molecular Weight	192kD
Cell Pathway	Cytoplasm
Tissue Specificity	Bone marrow,Brain,Cervix carcinoma,Colon,Epithelium,Fetal kidney,Hepatoma,Mammary c
Function	Clathrin is the major protein of the polyhedral coat of coated pits and vesicles. Two different adapter protein complexes link the clathrin lattice either to the plasma membrane or to the trans-Golgi network.,online information:Clathrin entry,similarity:Belongs to the clathrin heavy chain family.,subcellular location:Cytoplasmic face of coated pits and vesicles. Identified by mass spectrometry in melanosome fractions from stage I to stage IV.,subunit:Clathrin triskelions, composed of 3 heavy chains and 3 light chains, are the basic subunits of the clathrin coat. In the presence of light chains, hub assembly is influenced by both the pH and the concentration of calcium. Interacts with HIP1.,
Background	Clathrin is a major protein component of the cytoplasmic face of intracellular organelles, called coated vesicles and coated pits. These specialized organelles are involved in the intracellular trafficking of receptors and endocytosis of a variety





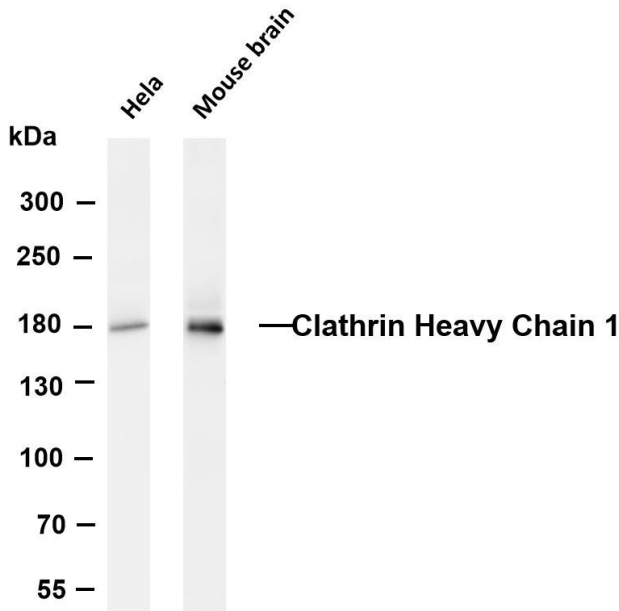
of macromolecules. The basic subunit of the clathrin coat is composed of three heavy chains and three light chains. [provided by RefSeq, Jul 2008],

matters needing attention

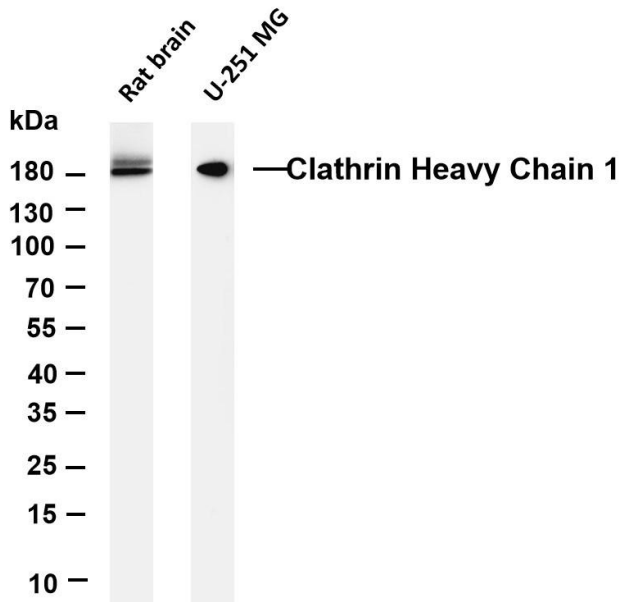
Avoid repeated freezing and thawing!

Usage suggestions

This product can be used in immunological reaction related experiments. For more information, please consult technical personnel.

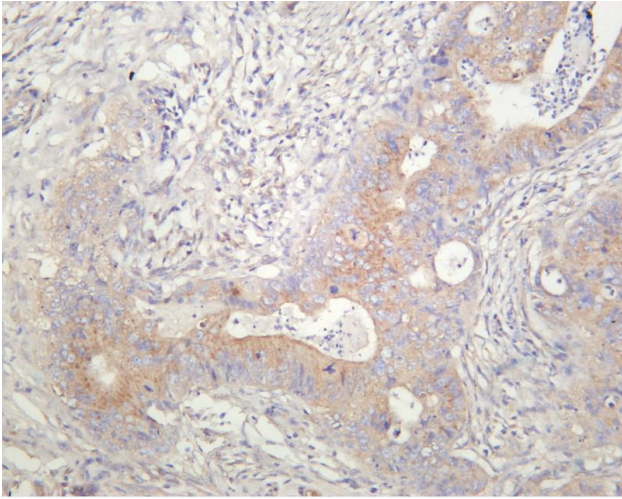


Various whole cell lysates were separated by 4-8% SDS-PAGE, and the membrane was blotted with anti-Clathrin Heavy Chain 1 antibody. The HRP-conjugated Goat anti-Rabbit IgG(H + L) antibody was used to detect the antibody. Lane 1: HeLa Lane 2: Mouse brain Predicted band size: 192kDa Observed band size: 180kDa

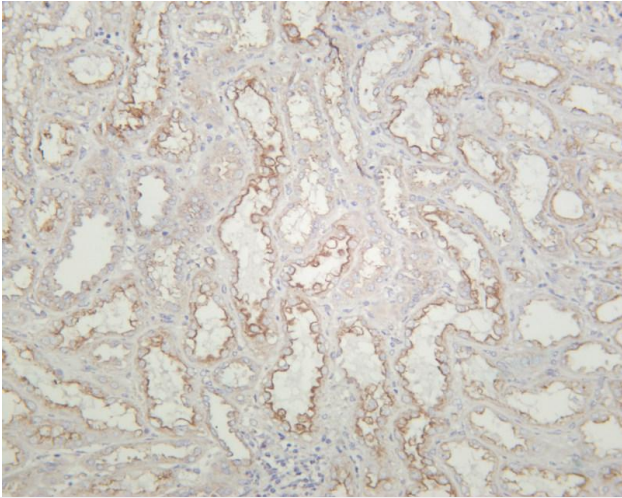


Various whole cell lysates were separated by 4-20% SDS-PAGE, and the membrane was blotted with anti-Clathrin Heavy Chain 1 antibody. The HRP-conjugated Goat anti-Rabbit IgG(H + L) antibody was used to detect the antibody. Lane 1:Rat brain Lane 2: U-251 MG Predicted band size: 192kDa Observed band size: 180kDa





Human colon carcinoma was stained with anti-Clathrin Heavy Chain 1 rabbit antibody



Human kidney was stained with anti-Clathrin Heavy Chain 1 rabbit antibody

