



ATF-4 Rabbit mAb

Catalog No	YP-rAb-18036
Isotype	IgG
Reactivity	Human,Mouse,Rat,Pig
Applications	WB,IHC,IF,IP,ELISA
Gene Name	ATF4
Protein Name	Cyclic AMP-dependent transcription factor ATF-4
Purification Process	Protein A
Specificity	Endogenous
Formulation	PBS, 50% glycerol, 0.05% Proclin 300, 0.05%BSA
Source	Monoclonal, Rabbit,IgG
Dilution	IHC 1:100-1:200; WB 1:1000-1:5000; IF 1:200-1:1000; ELISA 1:5000-1:20000; IP 1:50-1:200, Note: For IHC, we suggest antigen retrieval with TE buffer pH 9.0
Concentration	0.5 mg/ml
Purity	≥90%
Storage Stability	-15° C to -25° C/1 year(Do not lower than -25° C)
Synonyms	ATF4 ; CREB2 ; TXREB ; Cyclic AMP-dependent transcription factor ATF-4 ; cAMP-dependent transcription factor ATF-4 ; Activating transcription factor 4 ; Cyclic AMP-responsive element-binding protein 2 ; CREB-2 ; cAMP-responsive element-binding prot
Observed Band	50kD
Calculated Molecular Weight	38kD
Cell Pathway	Nucleus
Tissue Specificity	Bladder,Colon,Fibroblast,Leukemic T-cell,Lung,Ovary,Placenta,
Function	Transcriptional activator. Binds the cAMP response element (CRE) (consensus: 5'-GTGACGT[AC][AG]-3'), a sequence present in many viral and cellular promoters. It binds to a Tax-responsive enhancer element in the long terminal repeat of HTLV-I.,similarity:Belongs to the bZIP family.,similarity:Contains 1 bZIP domain.,subcellular location:Colocalizes with GABBR1 in hippocampal neuron dendritic membranes.,subunit:Interacts with the C-terminal region of GABBR1 via the leucine zipper of its C-terminal bZIP domain. Interacts with the C-terminal region of GABBR2 (By similarity). Binds DNA as a homo-or heterodimer. Interacts with the N-terminal region of CEP290.,





Background

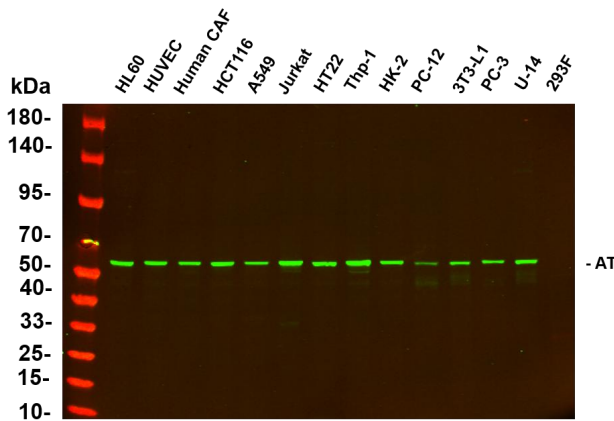
activating transcription factor 4(ATF4) Homo sapiens This gene encodes a transcription factor that was originally identified as a widely expressed mammalian DNA binding protein that could bind a tax-responsive enhancer element in the LTR of HTLV-1. The encoded protein was also isolated and characterized as the cAMP-response element binding protein 2 (CREB-2). The protein encoded by this gene belongs to a family of DNA-binding proteins that includes the AP-1 family of transcription factors, cAMP-response element binding proteins (CREBs) and CREB-like proteins. These transcription factors share a leucine zipper region that is involved in protein-protein interactions, located C-terminal to a stretch of basic amino acids that functions as a DNA binding domain. Two alternative transcripts encoding the same protein have been described. Two pseudogenes are located on the X chromosome at q28 in a region containing a large inverted duplication.

matters needing attention

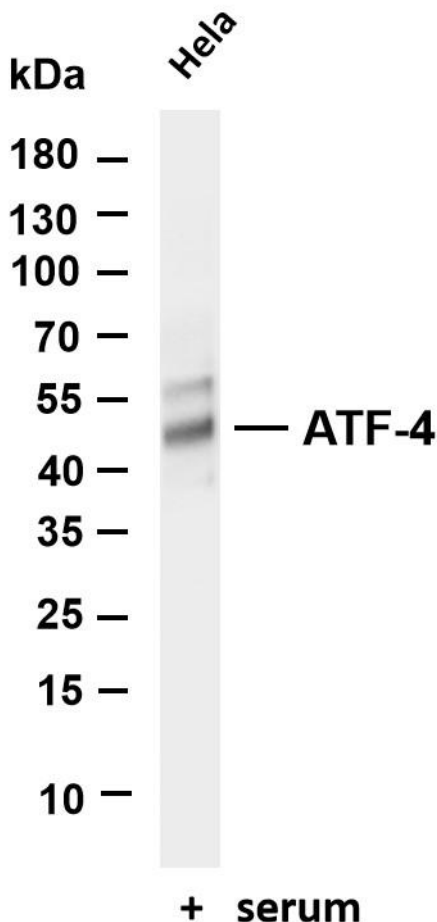
Avoid repeated freezing and thawing!

Usage suggestions

This product can be used in immunological reaction related experiments. For more information, please consult technical personnel.

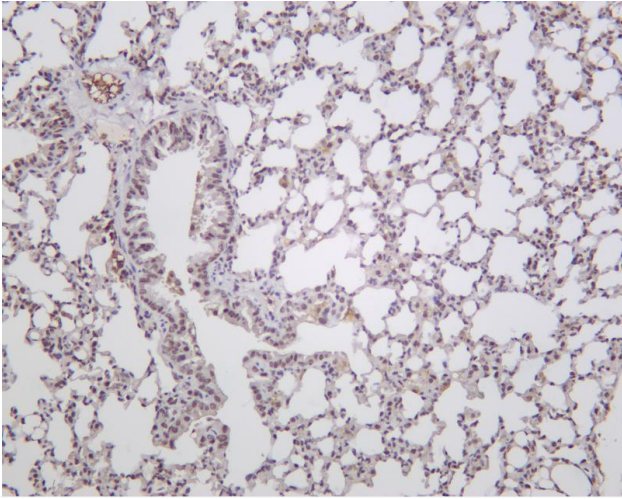


Various whole cell lysates were separated by 4-20% SDS-PAGE, and the primary antibody was used at 4°C, over night with a 1:2500 dilution. The Dylight 800-conjugated Goat anti-Rabbit antibody

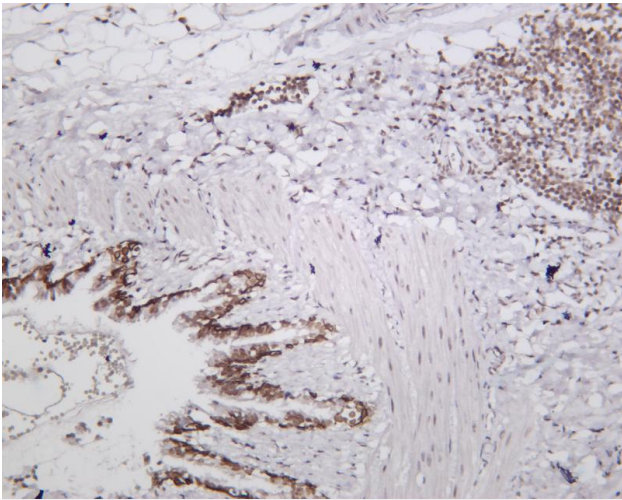


Various whole cell lysates were separated by 4-20% SDS-PAGE, and the membrane was blotted with anti-ATF-4 antibody. The HRP-conjugated Goat anti-Rabbit IgG(H + L) antibody was used to detect the antibody. Lane 1:HeLa treated with serum for 30min Predicted band size: 38kDa Observed band size: 49kDa

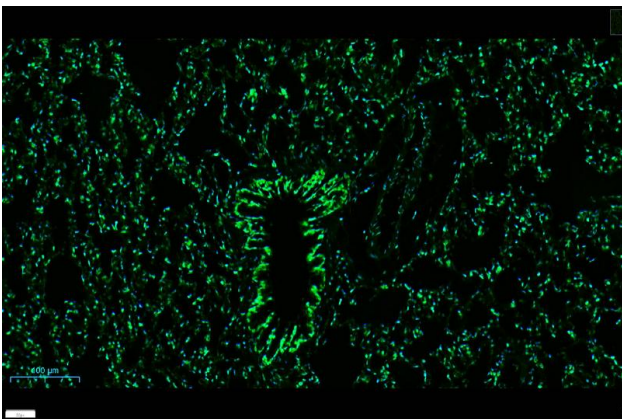




Mouse lung was stained with Anti-ATF-4 rabbit antibody



Rat lung was stained with Anti-ATF-4 rabbit antibody



Rat lung was stained with Anti-ATF-4 rabbit antibody

杭州臻优品生物科技有限公司

热销产品:

蛋白、一抗、抗体对、ELISA试剂盒、生化试剂盒
CCK8试剂盒、QPCR检测试剂盒

检测服务:

ELISA检测及定制服务 | 生化检测 | PCR、QPCR检测 | WB检测
ICO-IP检测 | 切片 | 染色 | 免疫组化 | 免疫荧光 | 透射电镜全套
| 宏基因组、转录组、基因组、蛋白组、代谢组测序



关注官网



关注客服