



TOMM20 Rabbit mAb

Catalog No	YP-rAb-18035
Isotype	IgG
Reactivity	Human,Mouse,Rat
Applications	WB,IHC,IF,ELISA
Gene Name	TOMM20
Protein Name	Mitochondrial import receptor subunit TOM20 homolog
Purification Process	Protein A
Specificity	Endogenous
Formulation	PBS, 50% glycerol, 0.05% Proclin 300, 0.05%BSA
Source	Monoclonal, Rabbit,IgG
Dilution	IHC 1:100-1:500; WB 1:1000-1:5000; IF 1:200-1:1000; ELISA 1:5000-1:20000; Note: For IHC, we suggest antigen retrieval with TE buffer pH 9.0
Concentration	0.5 mg/ml
Purity	≥90%
Storage Stability	-15° C to -25° C/1 year(Do not lower than -25° C)
Synonyms	TOMM20 ; KIAA0016 ; Mitochondrial import receptor subunit TOM20 homolog ; Mitochondrial 20 kDa outer membrane protein ; Outer mitochondrial membrane receptor Tom20
Observed Band	16kD
Calculated Molecular Weight	16kD
Cell Pathway	Membranous
Tissue Specificity	Bone marrow,Brain,Cervix,Epithelium,Eye,Fibroblast,Pancreas
Function	Central component of the receptor complex responsible for the recognition and translocation of cytosolically synthesized mitochondrial preproteins. Together with tom22 functions as the transit peptide receptor at the surface of the mitochondrion outer membrane and facilitates the movement of preproteins into the tom40 translocation pore.,similarity:Belongs to the Tom20 family.,subunit:Forms part of the preprotein translocase complex of the outer mitochondrial membrane (TOM complex) which consists of at least 7 different proteins (TOMM5, TOMM6, TOMM7, TOMM20, TOMM22, TOMM40 and TOMM70). Interacts with TOM22.,
Background	function:Central component of the receptor complex responsible for the recognition and translocation of cytosolically synthesized mitochondrial

杭州臻优品生物科技有限公司

热销产品:

蛋白、一抗、抗体对、ELISA试剂盒、生化试剂盒
CCK8试剂盒、QPCR检测试剂盒

检测服务:

ELISA检测及定制服务 | 生化检测 | PCR、QPCR检测 | WB检测
ICO-IP检测 | 切片 | 染色 | 免疫组化 | 免疫荧光 | 透射电镜全套
| 宏基因组、转录组、基因组、蛋白组、代谢组测序



关注官网



关注客服



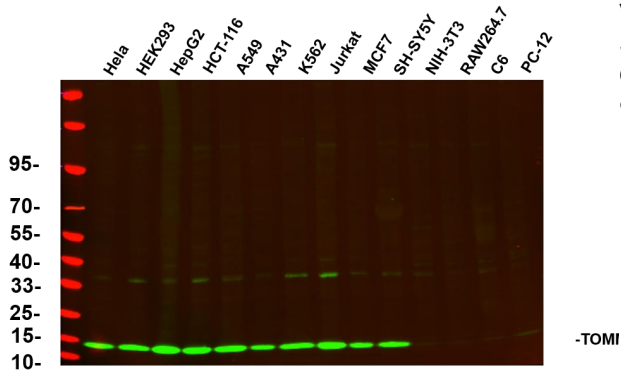
preproteins. Together with tom22 functions as the transit peptide receptor at the surface of the mitochondrion outer membrane and facilitates the movement of preproteins into the tom40 translocation pore.,similarity:Belongs to the Tom20 family.,subunit:Forms part of the preprotein translocase complex of the outer mitochondrial membrane (TOM complex) which consists of at least 7 different proteins (TOMM5, TOMM6, TOMM7, TOMM20, TOMM22, TOMM40 and TOMM70). Interacts with TOM22.,

matters needing attention

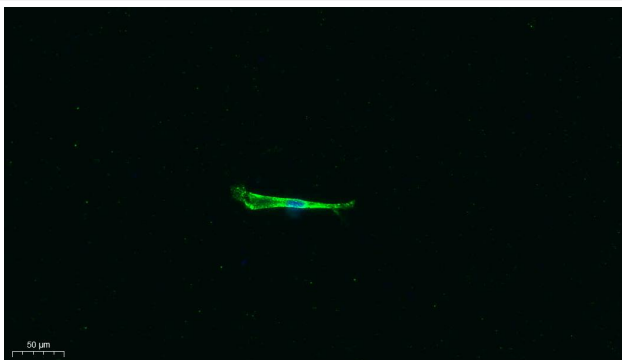
Avoid repeated freezing and thawing!

Usage suggestions

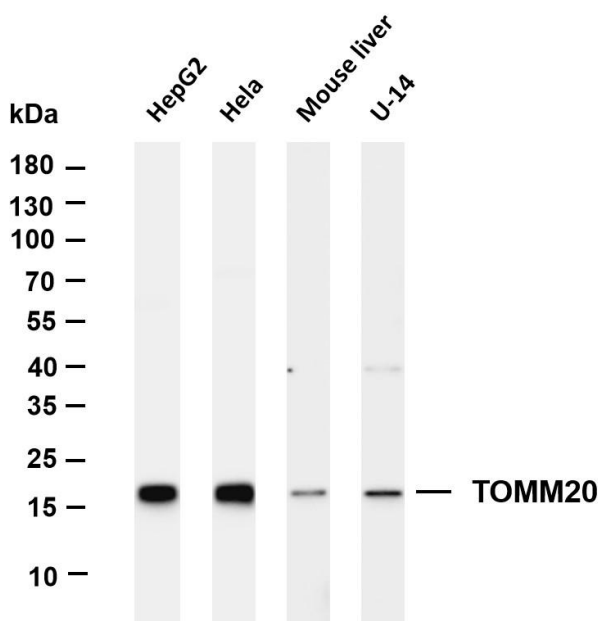
This product can be used in immunological reaction related experiments. For more information, please consult technical personnel.



Various whole cell lysates were separated by 4-20% SDS-PAGE, and the primary antibody was used at 4 °C, over night with a 1:5000 dilution . The Dylight 800-conjugated Goat anti-Rabbit antibody



Immunofluorescence analysis of A549. 1,primary Antibody was diluted at 1:200(4 °C overnight). 2, Goat Anti Rabbit IgG (H&L) - Alexa Fluor 488 Secondary antibody was diluted at 1:1000(room temperature, 50min).3, DAPI(blue) 10min.



Various whole cell lysates were separated by 4-20% SDS-PAGE, and the membrane was blotted with anti-TOMM20 antibody. The HRP-conjugated Goat anti-Rabbit IgG(H + L) antibody was used to detect the antibody. Lane 1: HepG2 Lane 2: HeLa Lane 3: Mouse liver Lane 4: U-14 Predicted band size: 16kDa Observed band size: 16kDa

杭州臻优品生物科技有限公司

热销产品:

蛋白、一抗、抗体对、ELISA试剂盒、生化试剂盒
CCK8试剂盒、QPCR检测试剂盒

检测服务:

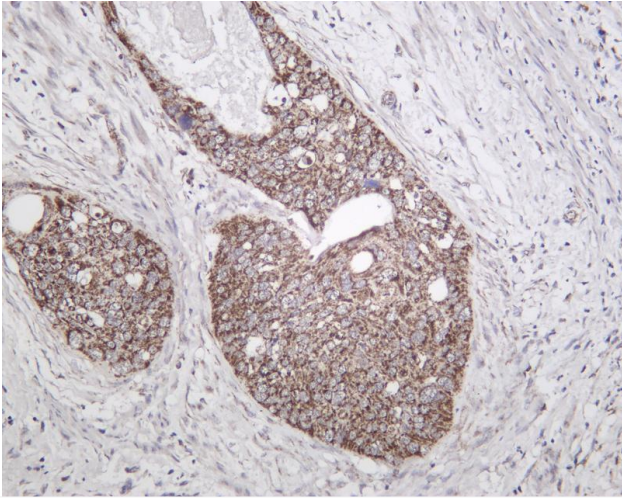
ELISA检测及定制服务 | 生化检测 | PCR、QPCR检测 | WB检测
ICO-IP检测 | 切片 | 染色 | 免疫组化 | 免疫荧光 | 透射电镜全套
| 宏基因组、转录组、基因组、蛋白组、代谢组测序



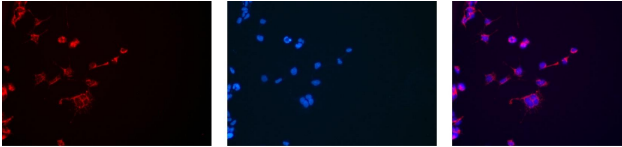
关注官网



关注客服



Human cervical carcinoma was stained with Anti-TOMM20 rabbit antibody



Immunofluorescence analysis of HEK293. Picture A: TOMM20 antibody (red). Picture B: DAPI (blue). Picture C: Merge of A+B

A

B

C

杭州臻优品生物科技有限公司

热销产品:

蛋白、一抗、抗体对、ELISA试剂盒、生化试剂盒
CCK8试剂盒、QPCR检测试剂盒

检测服务:

ELISA检测及定制服务 | 生化检测 | PCR、QPCR检测 | WB检测
ICO-IP检测 | 切片 | 染色 | 免疫组化 | 免疫荧光 | 透射电镜全套
| 宏基因组、转录组、基因组、蛋白组、代谢组测序



关注官网



关注客服