



LRP1 Rabbit mAb

Catalog No	YP-rAb-18029
Isotype	IgG
Reactivity	Human,Mouse,Rat
Applications	WB,IHC,IF,IP,ELISA
Gene Name	LRP1
Protein Name	Prolow-density lipoprotein receptor-related protein 1
Purification Process	Protein A
Specificity	Endogenous
Formulation	PBS, 50% glycerol, 0.05% Proclin 300, 0.05%BSA
Source	Monoclonal, Rabbit,IgG
Dilution	IHC 1:200-1:1000; WB 1:1000-1:5000; IF 1:200-1:1000; ELISA 1:5000-1:20000; IP 1:50-1:200, Note: For IHC, we suggest antigen retrieval with TE buffer pH 9.0
Concentration	0.5 mg/ml
Purity	≥90%
Storage Stability	-15° C to -25° C/1 year(Do not lower than -25° C)
Synonyms	LRP1 ; A2MR ; APR ; Prolow-density lipoprotein receptor-related protein 1 ; LRP-1 ; Alpha-2-macroglobulin receptor ; A2MR ; Apolipoprotein E receptor ; APOER ; CD antigen CD91
Observed Band	85kD
Calculated Molecular Weight	85kD
Cell Pathway	Membranous
Tissue Specificity	Most abundant in liver, brain and lung.
Function	Endocytic receptor involved in endocytosis and in phagocytosis of apoptotic cells. Required for early embryonic development. Involved in cellular lipid homeostasis. Involved in the plasma clearance of chylomicron remnants and activated LRPAP1 (alpha 2-macroglobulin), as well as the local metabolism of complexes between plasminogen activators and their endogenous inhibitors. May modulate cellular events, such as APP metabolism, kinase-dependent intracellular signaling, neuronal calcium signaling as well as neurotransmission.,PTM:Cleaved into a 85 kDa membrane-spanning subunit (LRP-85) and a 515 kDa large extracellular domain (LRP-515) that remains non-covalently associated. Gamma-secretase-dependent cleavage of LRP-85 releases the intracellular domain from the membrane.,PTM:Phosphorylated on serine and threonine





residues.,PTM:Phosphorylated on tyrosine residues upon stimulation with PDGF. Tyrosine phosphorylation promotes interaction with SHC1.,PTM:The N-terminus is blocked.,similarity:Belongs to the LDLR family.,similarity:Contains 22 EGF-like domains.,similarity:Contains 31 LDL-receptor class A domains.,similarity:Contains 34 LDL-receptor class B repeats.,subcellular location:After cleavage, the intracellular domain (LRPICD) is detected both in the cytoplasm and in the nucleus.,subunit:Heterodimer of an 85-kDa membrane-bound carboxyl subunit and a non-covalently attached 515-kDa amino-terminal subunit. Intracellular domain interacts with MAFB (By similarity). Found in a complex with PID1/PCLI1, LRP1 and CUBNI. Interacts with SNX17, PID1/PCLI1, PDGF and CUBN. The intracellular domain interacts with SHC1, GULP1 and DAB1. Interacts with LRPAP1.,tissue specificity:Most abundant in liver, brain and lung.,

Background

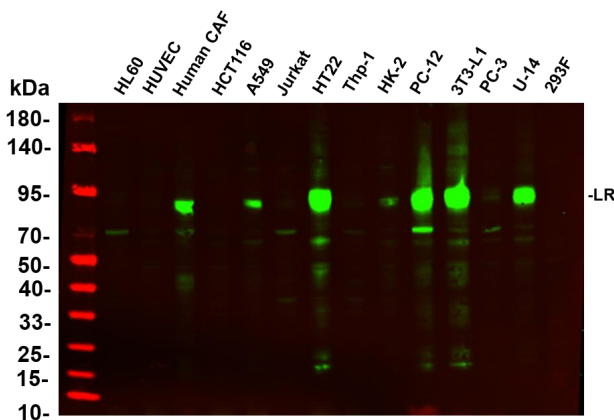
This gene encodes a member of the low-density lipoprotein receptor family of proteins. The encoded preproprotein is proteolytically processed by furin to generate 515 kDa and 85 kDa subunits that form the mature receptor (PMID: 8546712). This receptor is involved in several cellular processes, including intracellular signaling, lipid homeostasis, and clearance of apoptotic cells. In addition, the encoded protein is necessary for the alpha 2-macroglobulin-mediated clearance of secreted amyloid precursor protein and beta-amyloid, the main component of amyloid plaques found in Alzheimer patients. Expression of this gene decreases with age and has been found to be lower than controls in brain tissue from Alzheimer's disease patients. [provided by RefSeq, Oct 2015],

matters needing attention

Avoid repeated freezing and thawing!

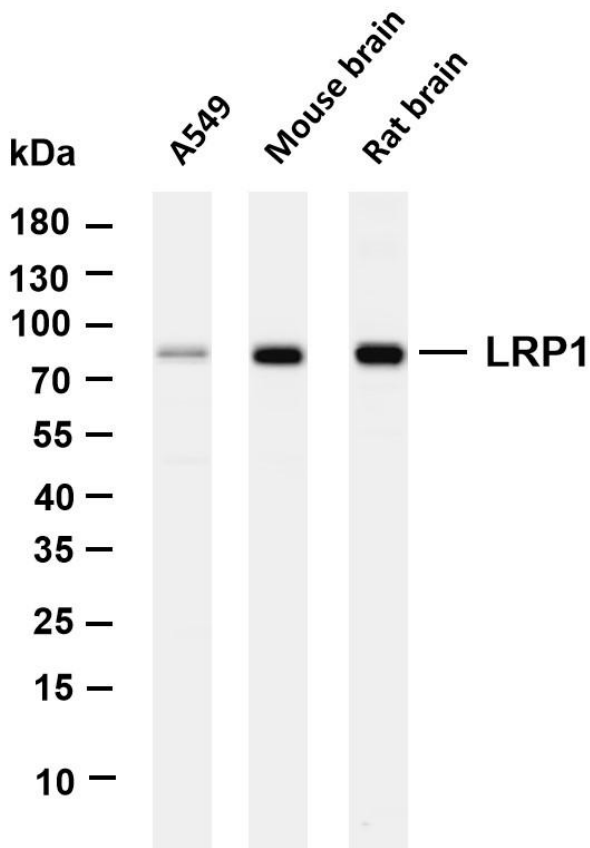
Usage suggestions

This product can be used in immunological reaction related experiments. For more information, please consult technical personnel.

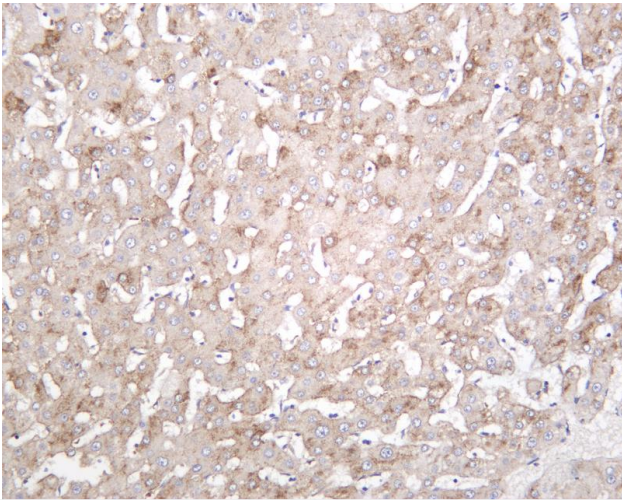


Various whole cell lysates were separated by 4-20% SDS-PAGE, and the primary antibody was used at 4°C, over night with a 1:2500 dilution. The Dylight 800-conjugated Goat anti-Rabbit antibody

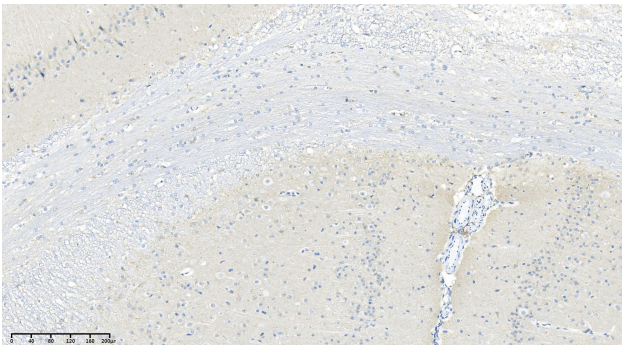




Various whole cell lysates were separated by 4-20% SDS-PAGE, and the membrane was blotted with anti-LRP1 antibody. The HRP-conjugated Goat anti-Rabbit IgG(H + L) antibody was used to detect the antibody. Lane 1: A549 Lane 2: Mouse brain Lane 3: Rat brain Predicted band size: 85kDa Observed band size: 85kDa



Human liver was stained with Anti-LRP1 rabbit antibody



Rat brain was stained with anti-LRP1 Rabbit antibody

杭州臻优品生物科技有限公司

热销产品:

蛋白、一抗、抗体对、ELISA试剂盒、生化试剂盒
CCK8试剂盒、QPCR检测试剂盒

检测服务:

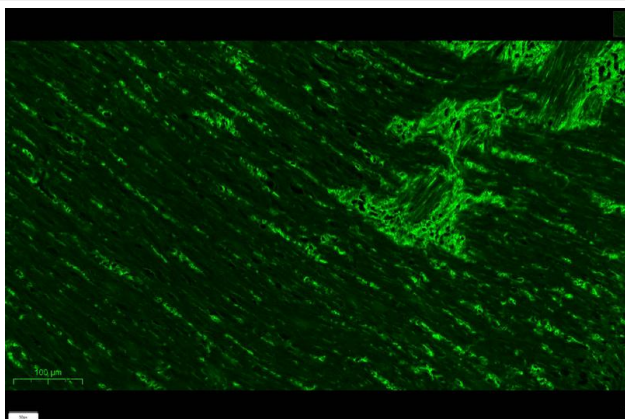
ELISA检测及定制服务 | 生化检测 | PCR、QPCR检测 | WB检测
ICO-IP检测 | 切片 | 染色 | 免疫组化 | 免疫荧光 | 透射电镜全套
| 宏基因组、转录组、基因组、蛋白组、代谢组测序



关注官网



关注客服



rat colon was stained with Anti-LRP1 rabbit antibody

杭州臻优品生物科技有限公司

热销产品:

蛋白、一抗、抗体对、ELISA试剂盒、生化试剂盒
CCK8试剂盒、QPCR检测试剂盒

检测服务:

ELISA检测及定制服务 | 生化检测 | PCR、QPCR检测 | WB检测
ICO-IP检测 | 切片 | 染色 | 免疫组化 | 免疫荧光 | 透射电镜全套
| 宏基因组、转录组、基因组、蛋白组、代谢组测序



关注官网



关注客服