



Calreticulin Rabbit mAb

Catalog No	YP-rAb-18027
Isotype	IgG
Reactivity	Human,Mouse,Rat
Applications	WB,IHC,IF,IP,ELISA
Gene Name	CALR
Protein Name	Calreticulin
Purification Process	Protein A
Specificity	Endogenous
Formulation	PBS, 50% glycerol, 0.05% Proclin 300, 0.05%BSA
Source	Monoclonal, Rabbit,IgG
Dilution	IHC 1:200-1:1000; WB 1:1000-1:5000; IF 1:200-1:1000; ELISA 1:5000-1:20000; IP 1:50-1:200, Note: For IHC, we suggest antigen retrieval with TE buffer pH 9.0
Concentration	0.5 mg/ml
Purity	≥90%
Storage Stability	-15° C to -25° C/1 year(Do not lower than -25° C)
Synonyms	CALR ; CRTC ; Calreticulin ; CRP55 ; Calregulin ; Endoplasmic reticulum resident protein 60 ; ERp60 ; HACBP ; grp60
Observed Band	55kD
Calculated Molecular Weight	48kD
Cell Pathway	Cytoplasm
Tissue Specificity	Brain,Cajal-Retzius cell,Colon carcinoma,Eye,Fetal brain cortex,Keratinocyte,Liver,Pancreas
Function	Caution:Was originally (PubMed:2332496) thought to be the 52 kDa Ro autoantigen.,Domain:Associates with PDIA3 through the tip of the extended arm formed by the P-domain.,Domain:Can be divided into a N-terminal globular domain, a proline-rich P-domain forming an elongated arm-like structure and a C-terminal acidic domain. The P-domain binds one molecule of calcium with high affinity, whereas the acidic C-domain binds multiple calcium ions with low affinity.,Domain:The interaction with glycans occurs through a binding site in the globular lectin domain.,Domain:The zinc binding sites are localized to the N-domain.,Function:Molecular calcium binding chaperone promoting folding, oligomeric assembly and quality control in the ER via the calreticulin/calnexin cycle. This lectin interacts transiently with almost all of the monoglucosylated glycoproteins that are synthesized in the ER. Interacts with the DNA-binding





domain of NR3C1 and mediates its nuclear export.,mass spectrometry: PubMed:11149926,online information:Calreticulin,online information:Calreticulin entry,similarity:Belongs to the calreticulin family.,subcellular location:Also found in cell surface (T cells), cytosol and extracellular matrix. Associated with the lytic granules in the cytolytic T-lymphocytes.,subunit:Monomer. Component of an EIF2 complex at least composed of CUGBP1, CALR, CALR3, EIF2S1, EIF2S2, HSP90B1 and HSPA5. Interacts with PDIA3/ERp57 and with NR3C1.,

Background

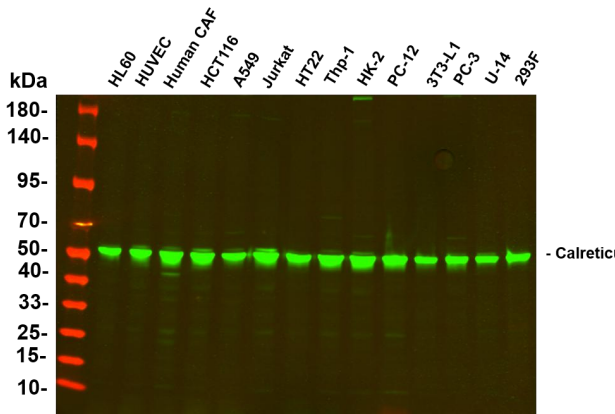
Calreticulin is a multifunctional protein that acts as a major Ca(2+)-binding (storage) protein in the lumen of the endoplasmic reticulum. It is also found in the nucleus, suggesting that it may have a role in transcription regulation. Calreticulin binds to the synthetic peptide KLGFFKR, which is almost identical to an amino acid sequence in the DNA-binding domain of the superfamily of nuclear receptors. Calreticulin binds to antibodies in certain sera of systemic lupus and Sjogren patients which contain anti-Ro/SSA antibodies, it is highly conserved among species, and it is located in the endoplasmic and sarcoplasmic reticulum where it may bind calcium. The amino terminus of calreticulin interacts with the DNA-binding domain of the glucocorticoid receptor and prevents the receptor from binding to its specific glucocorticoid response element. Calreticulin can inhibit the binding of androgen receptor to its

matters needing attention

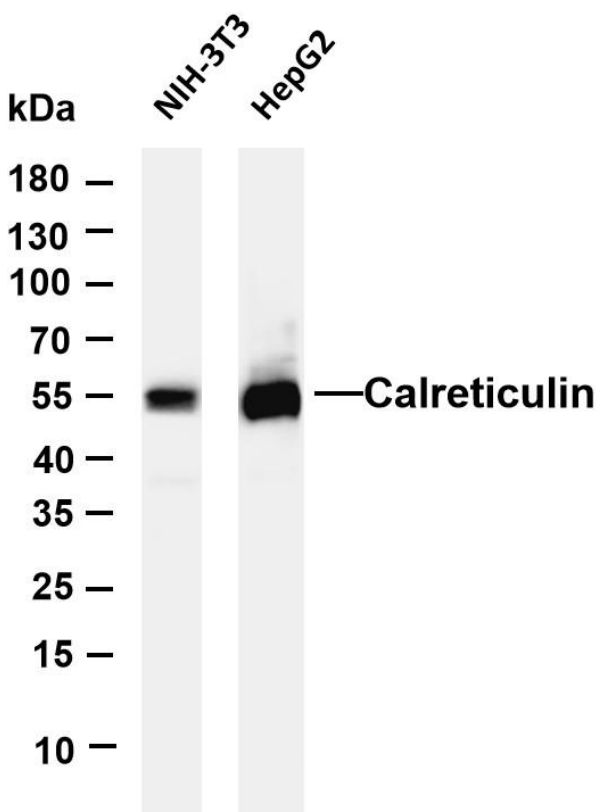
Avoid repeated freezing and thawing!

Usage suggestions

This product can be used in immunological reaction related experiments. For more information, please consult technical personnel.



Various whole cell lysates were separated by 4-20% SDS-PAGE, and the primary antibody was used at 4°C, over night with a 1:5000 dilution. The Dylight 800-conjugated Goat anti-Rabbit antibody



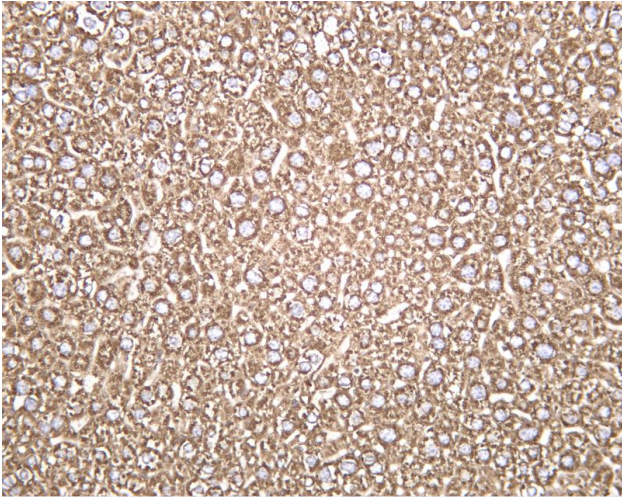
Various whole cell lysates were separated by 4-20% SDS-PAGE, and the membrane was blotted with anti-Calreticulin antibody. The HRP-conjugated Goat anti-Rabbit IgG(H + L) antibody was used to detect the antibody. Lane 1: NIH-3T3 Lane 2: HepG2 Predicted band size: 48kDa Observed band size: 55kDa



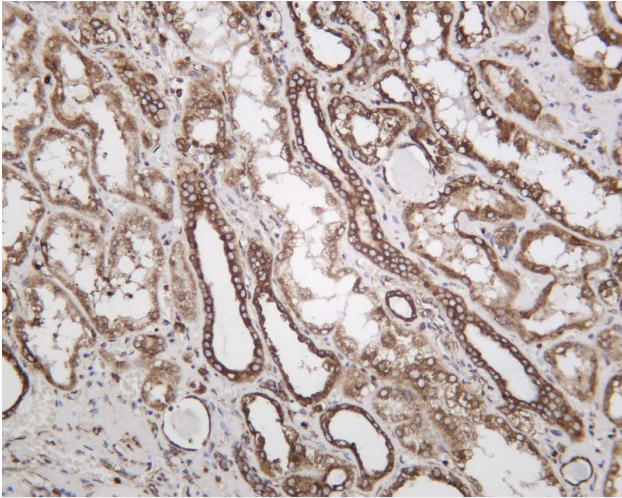
关注官网



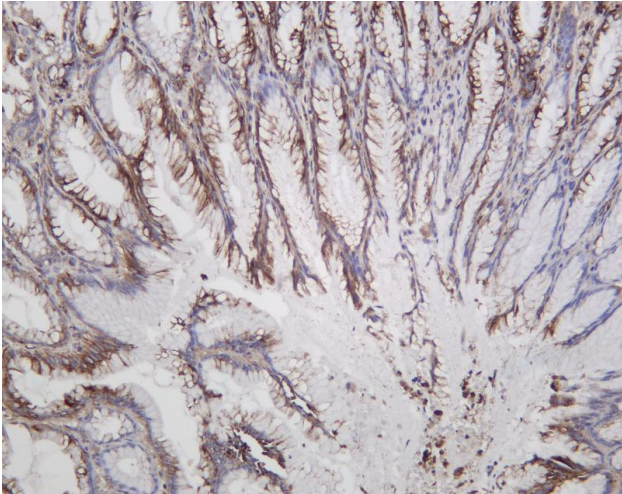
关注客服



Mouse liver was stained with Anti-Calreticulin rabbit antibody



Human kidney was stained with Anti-Calreticulin rabbit antibody



Human stomach was stained with Anti-Calreticulin rabbit antibody

杭州臻优品生物科技有限公司

热销产品:

蛋白、一抗、抗体对、ELISA试剂盒、生化试剂盒
CCK8试剂盒、QPCR检测试剂盒

检测服务:

ELISA检测及定制服务 | 生化检测 | PCR、QPCR检测 | WB检测
ICO-IP检测 | 切片 | 染色 | 免疫组化 | 免疫荧光 | 透射电镜全套
| 宏基因组、转录组、基因组、蛋白质组、代谢组测序



关注官网



关注客服