



# LAMP2 Rabbit mAb

<b>Catalog No</b>	YP-rAb-18025
<b>Isotype</b>	IgG
<b>Reactivity</b>	Human,Mouse,Rat
<b>Applications</b>	WB,IHC,IF,ELISA
<b>Gene Name</b>	LAMP2
<b>Protein Name</b>	Lysosome-associated membrane glycoprotein 2
<b>Purification Process</b>	Protein A
<b>Specificity</b>	Endogenous
<b>Formulation</b>	PBS, 50% glycerol, 0.05% Proclin 300, 0.05%BSA
<b>Source</b>	Monoclonal, Rabbit,IgG
<b>Dilution</b>	IHC 1:200-1:1000; WB 1:1000-1:5000; IF 1:200-1:1000; ELISA 1:5000-1:20000; Note: For IHC, we suggest antigen retrieval with TE buffer pH 9.0
<b>Concentration</b>	0.5 mg/ml
<b>Purity</b>	≥90%
<b>Storage Stability</b>	-15° C to -25° C/1 year(Do not lower than -25° C)
<b>Synonyms</b>	LAMP2 ; Lysosome-associated membrane glycoprotein 2 ; LAMP-2 ; Lysosome-associated membrane protein 2 ; CD107 antigen-like family member B ; CD107b
<b>Observed Band</b>	120kD
<b>Calculated Molecular Weight</b>	45kD
<b>Cell Pathway</b>	Membranous
<b>Tissue Specificity</b>	Isoform LAMP-2A is highly expressed in placenta, lung and liver, less in kidney and pancreas, low in brain and skeletal muscle (PubMed:7488019, PubMed:26856698). Isoform LAMP-2B is detected in spleen, thymus, prostate, testis, small intestine, colon, skeletal muscle, brain, placenta, lung, kidney, ovary and pancreas and liver (PubMed:7488019, PubMed:26856698). Isoform LAMP-2C is detected in small intestine, colon, heart, brain, skeletal muscle, and at lower levels in kidney and placenta (PubMed:26856698).
<b>Function</b>	Disease:Defects in LAMP2 are the cause of Danon disease (DAND) [MIM:300257]; also known as glycogen storage disease type 2B (GSD2B). DAND is a lysosomal glycogen storage disease characterized by the clinical triad of cardiomyopathy, vacuolar myopathy and mental retardation. It is often associated with an accumulation of glycogen in muscle and lysosomes.,Function:Implicated in tumor cell metastasis. May function in protection of the lysosomal membrane

## 杭州臻优品生物科技有限公司

### 热销产品:

蛋白、一抗、抗体对、ELISA试剂盒、生化试剂盒  
CCK8试剂盒、QPCR检测试剂盒

### 检测服务:

ELISA检测及定制服务 | 生化检测 | PCR、QPCR检测 | WB检测  
| CO-IP检测 | 切片 | 染色 | 免疫组化 | 免疫荧光 | 透射电镜全套  
| 宏基因组、转录组、基因组、蛋白组、代谢组测序



关注官网



关注客服



from autodigestion, maintenance of the acidic environment of the lysosome, adhesion when expressed on the cell surface (plasma membrane), and inter- and intracellular signal transduction.,PTM:O- and N-glycosylated; some of the 16 N-linked glycans are poly-lactosaminoglycans.,similarity:Belongs to the LAMP family.,subcellular location:This protein shuttles between lysosomes, endosomes, and the plasma membrane.,tissue specificity:Isoform LAMP-2A is highly expressed in placenta, lung and liver, less in kidney and pancreas, low in brain and skeletal muscle. Isoform LAMP-2B is highly expressed in skeletal muscle, less in brain, placenta, lung, kidney and pancreas, very low in liver.,

### Background

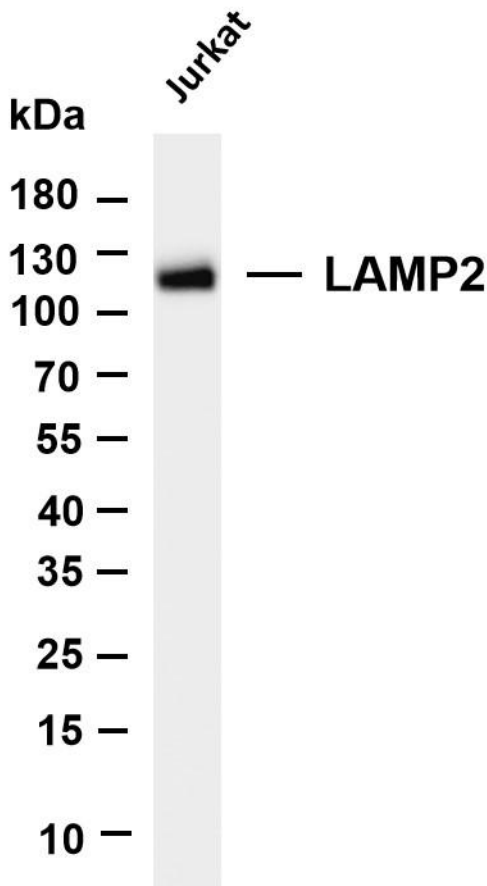
The protein encoded by this gene is a member of a family of membrane glycoproteins. This glycoprotein provides selectins with carbohydrate ligands. It may play a role in tumor cell metastasis. It may also function in the protection, maintenance, and adhesion of the lysosome. Alternative splicing of this gene results in multiple transcript variants encoding distinct proteins. [provided by RefSeq, Jul 2008],

### matters needing attention

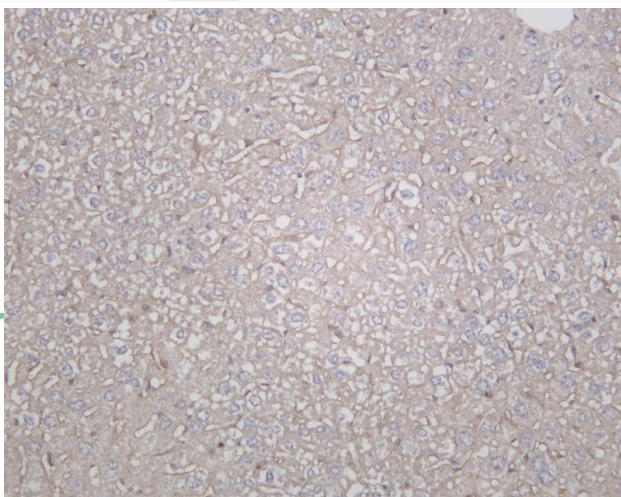
Avoid repeated freezing and thawing!

### Usage suggestions

This product can be used in immunological reaction related experiments. For more information, please consult technical personnel.

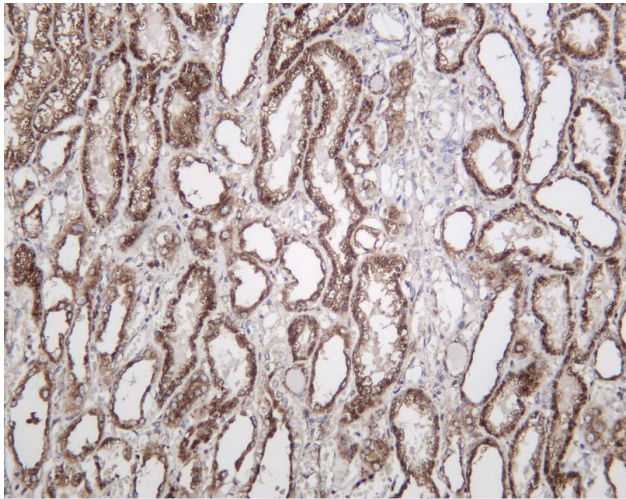


Various whole cell lysates were separated by 4-20% SDS-PAGE, and the membrane was blotted with anti-LAMP2 antibody. The HRP-conjugated Goat anti-Rabbit IgG(H + L) antibody was used to detect the antibody. Lane 1: Jurkat Predicted band size: 45kDa Observed band size: 120kDa

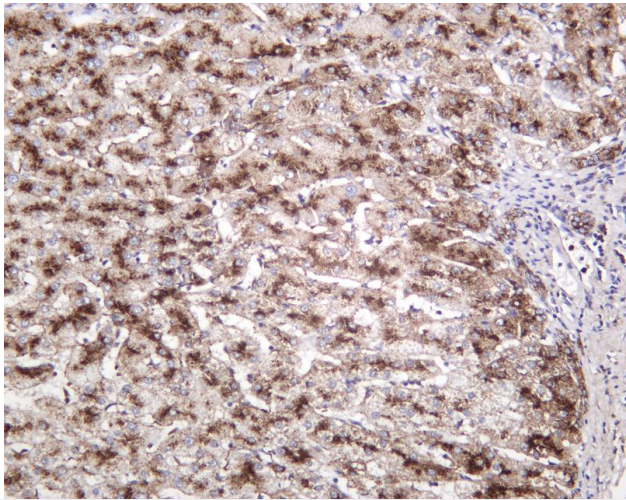


Mouse liver was stained with Anti-LAMP2 rabbit antibody

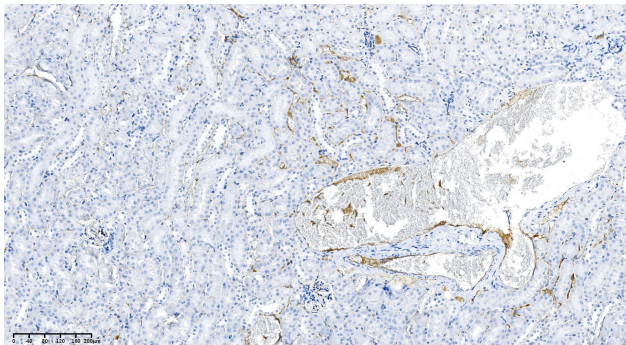




Human kidney was stained with Anti-LAMP2 rabbit antibody



Human liver was stained with Anti-LAMP2 rabbit antibody



Rat kidney was stained with anti-LAMP2 Rabbit antibody

