



# p21 Rabbit mAb

<b>Catalog No</b>	YP-rAb-18022
<b>Isotype</b>	IgG
<b>Reactivity</b>	Human,Rat,Bovine
<b>Applications</b>	WB,IHC,IF,IP,ELISA
<b>Gene Name</b>	CDKN1A CAP20 CDKN1 CIP1 MDA6 PIC1 SDI1 WAF1
<b>Protein Name</b>	Cyclin-dependent kinase inhibitor 1
<b>Purification Process</b>	Protein A
<b>Specificity</b>	Endogenous
<b>Formulation</b>	PBS, 50% glycerol, 0.05% Proclin 300, 0.05%BSA
<b>Source</b>	Monoclonal, Rabbit,IgG
<b>Dilution</b>	IHC 1:100-1:200; WB 1:1000-1:5000; IF 1:200-1:1000; ELISA 1:5000-1:20000; IP 1:50-1:200, Note: For IHC, we suggest antigen retrieval with TE buffer pH 9.0
<b>Concentration</b>	0.5 mg/ml
<b>Purity</b>	≥90%
<b>Storage Stability</b>	-15° C to -25° C/1 year(Do not lower than -25° C)
<b>Synonyms</b>	CDKN1A ; CAP20 ; CDKN1 ; CIP1 ; MDA6 ; PIC1 ; SDI1 ; WAF1 ; Cyclin-dependent kinase inhibitor 1 ; CDK-interacting protein 1 ; Melanoma differentiation-associated protein 6 ; MDA-6 ; p21 ;
<b>Observed Band</b>	18kD
<b>Calculated Molecular Weight</b>	18kD
<b>Cell Pathway</b>	Nucleus
<b>Tissue Specificity</b>	Expressed in all adult tissues, with 5-fold lower levels observed in the brain.
<b>Function</b>	May be the important intermediate by which p53 mediates its role as an inhibitor of cellular proliferation in response to DNA damage. Binds to and inhibits cyclin-dependent kinase activity, preventing phosphorylation of critical cyclin-dependent kinase substrates and blocking cell cycle progression.,induction:By p53, mezerein (antileukemic compound) and interferon beta.,PTM:Phosphorylation of Thr-145 by Akt or of Ser-146 by PKC impairs binding to PCNA.,similarity:Belongs to the CDI family.,tissue specificity:Expressed in all adult human tissues, with 5-fold lower levels observed in the brain.,
<b>Background</b>	This gene encodes a potent cyclin-dependent kinase inhibitor. The encoded protein binds to and inhibits the activity of cyclin-cyclin-dependent kinase2 or

## 杭州臻优品生物科技有限公司

### 热销产品:

蛋白、一抗、抗体对、ELISA试剂盒、生化试剂盒  
CCK8试剂盒、QPCR检测试剂盒

### 检测服务:

ELISA检测及定制服务 | 生化检测 | PCR、QPCR检测 | WB检测  
ICO-IP检测 | 切片 | 染色 | 免疫组化 | 免疫荧光 | 透射电镜全套  
| 宏基因组、转录组、基因组、蛋白组、代谢组测序



关注官网



关注客服



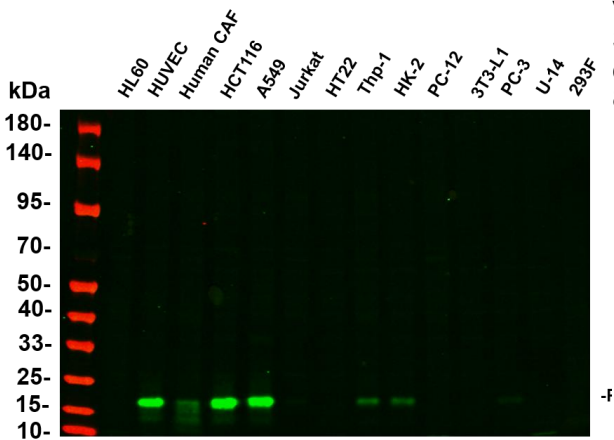
-cyclin-dependent kinase4 complexes, and thus functions as a regulator of cell cycle progression at G1. The expression of this gene is tightly controlled by the tumor suppressor protein p53, through which this protein mediates the p53-dependent cell cycle G1 phase arrest in response to a variety of stress stimuli. This protein can interact with proliferating cell nuclear antigen, a DNA polymerase accessory factor, and plays a regulatory role in S phase DNA replication and DNA damage repair. This protein was reported to be specifically cleaved by CASP3-like caspases, which thus leads to a dramatic activation of cyclin-dependent kinase2, and may be instrumental in the execution of apoptosis following caspase activation. Mice that lack this gene have the ability to regenerate damaged or missing tissue. Multiple alternatively spliced variants have been found for this gene. [provided by RefSeq, Sep 2015]

**matters needing attention**

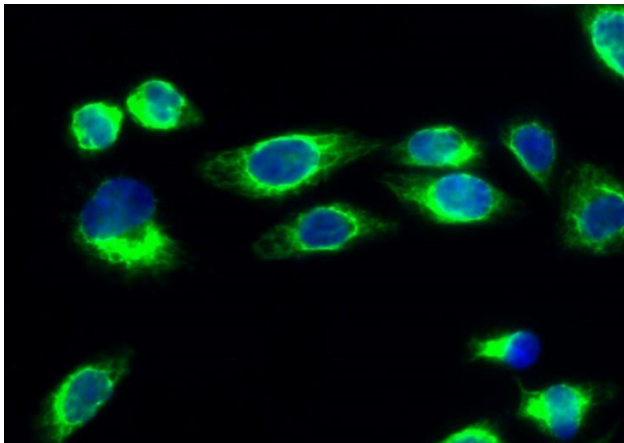
Avoid repeated freezing and thawing!

**Usage suggestions**

This product can be used in immunological reaction related experiments. For more information, please consult technical personnel.

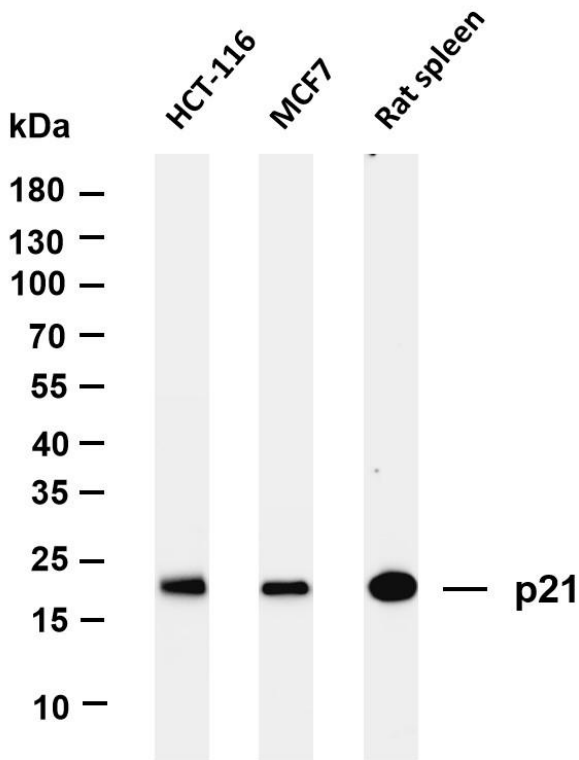


Various whole cell lysates were separated by 4-20% SDS-PAGE, and the primary antibody was used at 4°C, over night with a 1:5000 dilution. The Dylight 800-conjugated Goat anti-Rabbit antibody

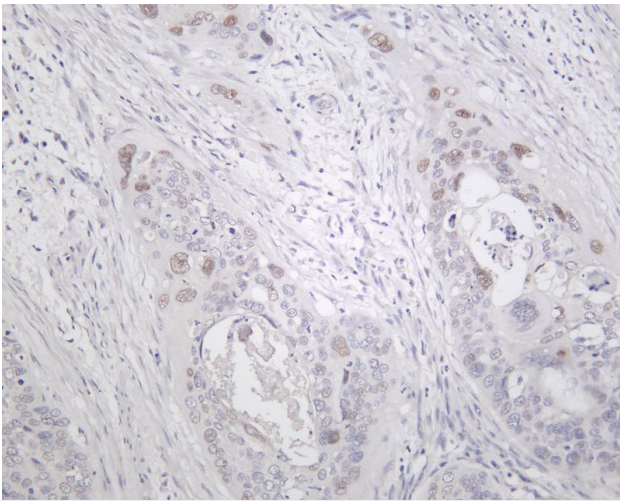


Immunofluorescence analysis of HeLa cell. 1, p21 Antibody (green) was diluted at 1:200 (4°C overnight). 2, Goat Anti Rabbit Alexa Fluor 488 Catalog:

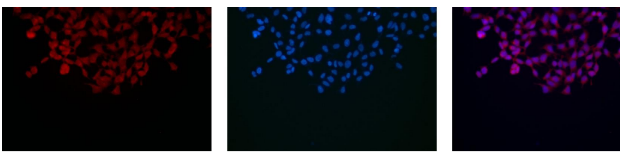




Various whole cell lysates were separated by 4-20% SDS-PAGE, and the membrane was blotted with anti-p21 antibody. The HRP-conjugated Goat anti-Rabbit IgG(H + L) antibody was used to detect the antibody. Lane 1: HCT-116 Lane 2: MCF7 Lane 3: Rat spleen Predicted band size: 18kDa Observed band size: 18kDa



Human cervical carcinoma was stained with Anti-p21 rabbit antibody



Immunofluorescence analysis of HEK293. Picture A: p21 antibody (red). Picture B: DAPI (blue). Picture C: Merge of A+B

A B C

