



KDM1A Rabbit mAb

Catalog No	YP-rAb-18019
Isotype	IgG
Reactivity	Human,Mouse,Rat
Applications	WB,IHC,IF,IP,ELISA
Gene Name	KDM1A AOF2 KDM1 KIAA0601 LSD1
Protein Name	LSD1
Purification Process	Protein A
Specificity	Endogenous
Formulation	PBS, 50% glycerol, 0.05% Proclin 300, 0.05%BSA
Source	Monoclonal, Rabbit,IgG
Dilution	IHC 1:200-1:1000; WB 1:1000-1:5000; IF 1:200-1:1000; ELISA 1:5000-1:20000; IP 1:50-1:200, Note: For IHC, we suggest antigen retrieval with TE buffer pH 9.0
Concentration	0.5 mg/ml
Purity	≥90%
Storage Stability	-15° C to -25° C/1 year(Do not lower than -25° C)
Synonyms	KDM1A ; AOF2 ; KDM1 ; KIAA0601 ; LSD1 ; Lysine-specific histone demethylase 1A ; BRAF35-HDAC complex protein BHC110 ; Flavin-containing amine oxidase domain-containing protein 2
Observed Band	110kD
Calculated Molecular Weight	93kD
Cell Pathway	Nucleus
Tissue Specificity	Ubiquitously expressed.
Function	cofactor:FAD.,Domain:The SWIRN domain may act as an anchor site for a histone tail.,Function:Histone demethylase that demethylates 'Lys-4' of histone H3, a specific tag for epigenetic transcriptional activation, thereby acting as a corepressor. Acts by oxidizing the substrate by FAD to generate the corresponding imine that is subsequently hydrolyzed. Demethylates both mono- and di-methylated 'Lys-4' of histone H3. May play a role in the repression of neuronal genes. Alone, it is unable to demethylate H3 'Lys-4' on nucleosomes and requires the presence of RCOR1/CoREST to achieve such activity. May also demethylate 'Lys-9' of histone H3, a specific tag for epigenetic transcriptional repression, thereby leading to derepression of androgen receptor target genes. Demethylates di-methylated 'Lys-370' of p53/TP53 which prevents interaction of





p53/TP53 with TP53BP1 and represses p53/TP53-mediated transcriptional activation. Demethylates and stabilizes the DNA methylase DNMT1. Required for gastrulation during embryogenesis. Similarity: Belongs to the flavin monoamine oxidase family. Contains 1 SWIRM domain. Subunit: Component of a BHC histone deacetylase complex that contains HDAC1, HDAC2, HMG20B/BRAF35, KDM1, RCOR1/CoREST and PHF21A/BHC80. The BHC complex may also contain ZMYM2, ZNF217, ZMYM3, GSE1 and GTF2I. In the complex, RCOR1/CoREST strongly enhances the demethylase activity and protects it from the proteasome while PHF21A/BHC80 inhibits the demethylase activity. Interacts with the androgen receptor (AR). Tissue specificity: Ubiquitously expressed.

Background

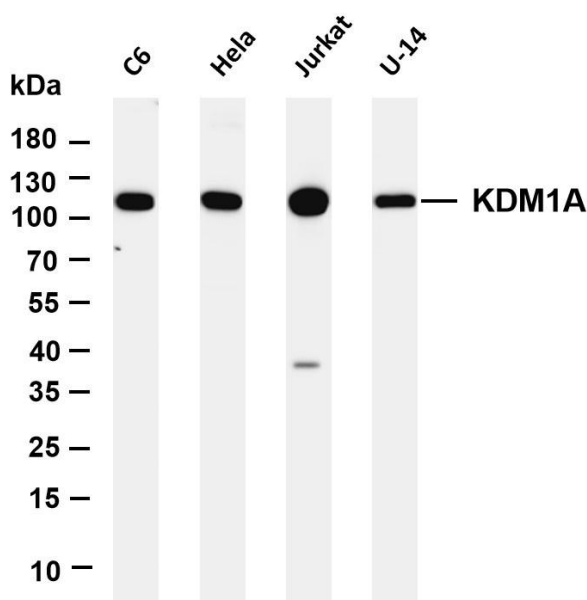
This gene encodes a nuclear protein containing a SWIRM domain, a FAD-binding motif, and an amine oxidase domain. This protein is a component of several histone deacetylase complexes, though it silences genes by functioning as a histone demethylase. Alternative splicing results in multiple transcript variants. [provided by RefSeq, Apr 2009],

matters needing attention

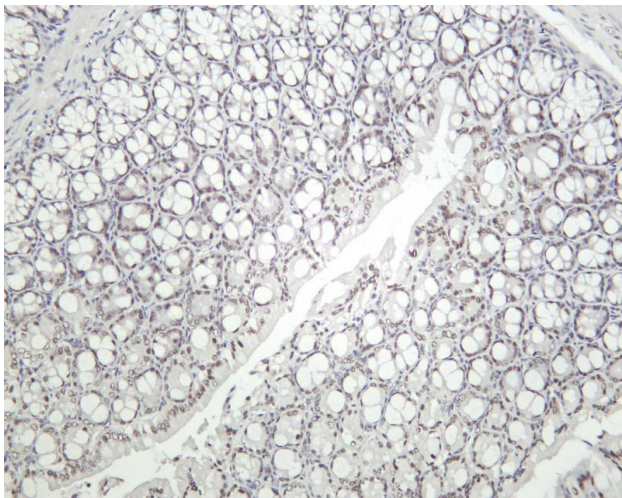
Avoid repeated freezing and thawing!

Usage suggestions

This product can be used in immunological reaction related experiments. For more information, please consult technical personnel.



Various whole cell lysates were separated by 4-20% SDS-PAGE, and the membrane was blotted with anti-KDM1A antibody. The HRP-conjugated Goat anti-Rabbit IgG(H + L) antibody was used to detect the antibody. Lane 1: C6 Lane 2: HeLa Lane 3: Jurkat Lane 4: U-14 Predicted band size: 93kDa Observed band size: 110kDa



Mouse colon was stained with Anti-KDM1A rabbit antibody

杭州臻优品生物科技有限公司

热销产品:

蛋白、一抗、抗体对、ELISA试剂盒、生化试剂盒
CCK8试剂盒、QPCR检测试剂盒

检测服务:

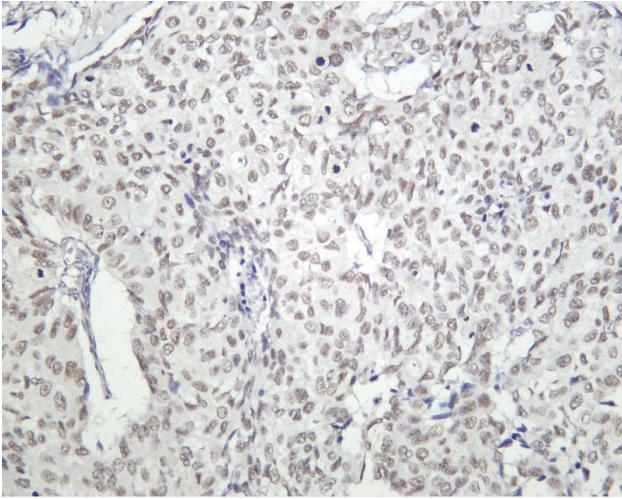
ELISA检测及定制服务 | 生化检测 | PCR、QPCR检测 | WB检测
ICO-IP检测 | 切片 | 染色 | 免疫组化 | 免疫荧光 | 透射电镜全套
| 宏基因组、转录组、基因组、蛋白组、代谢组测序



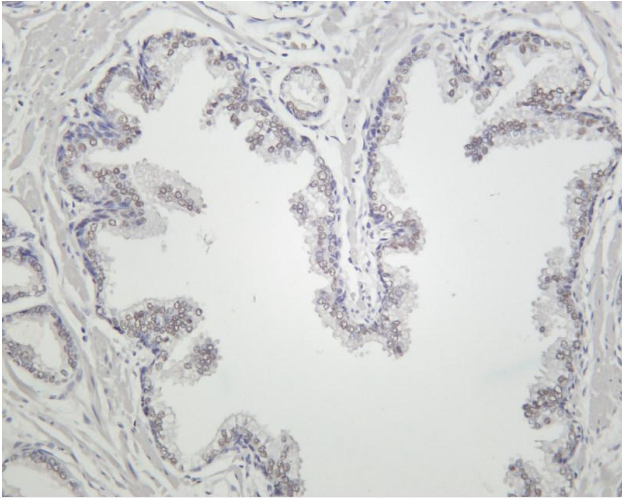
关注官网



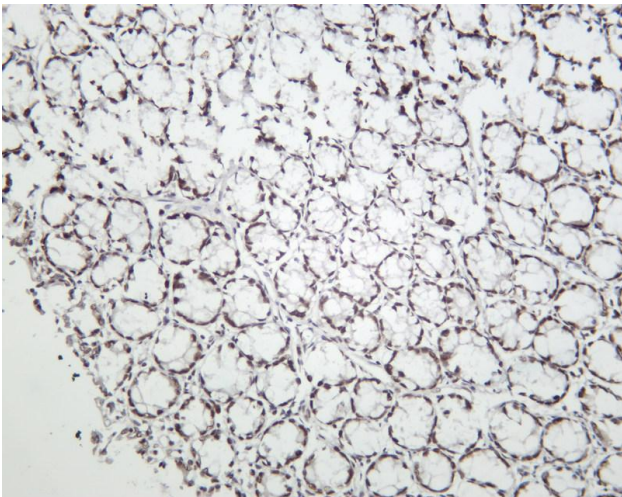
关注客服



Human prostate carcinoma was stained with Anti-KDM1A rabbit antibody



Human prostate was stained with Anti-KDM1A rabbit antibody



Rat colon was stained with Anti-KDM1A rabbit antibody

