



GCLM Rabbit mAb

| | |
|------------------------------------|---|
| Catalog No | YP-rAb-18017 |
| Isotype | IgG |
| Reactivity | Human,Mouse,Rat |
| Applications | WB,IHC,IF,IP,ELISA |
| Gene Name | GCLM |
| Protein Name | Glutamate--cysteine ligase regulatory subunit |
| Purification Process | Protein A |
| Specificity | Endogenous |
| Formulation | PBS, 50% glycerol, 0.05% Proclin 300, 0.05%BSA |
| Source | Monoclonal, Rabbit,IgG |
| Dilution | IHC 1:200-1:500; WB 1:1000-1:5000; IF 1:200-1:1000; ELISA 1:5000-1:20000; IP 1:50-1:200, Note: For IHC, we suggest antigen retrieval with TE buffer pH 9.0 |
| Concentration | 0.5 mg/ml |
| Purity | ≥90% |
| Storage Stability | -15° C to -25° C/1 year(Do not lower than -25° C) |
| Synonyms | GCLM ; GLCLR ; Glutamate--cysteine ligase regulatory subunit ; GCS light chain ; Gamma-ECS regulatory subunit ; Gamma-glutamylcysteine synthetase regulatory subunit ; Glutamate--cysteine ligase modifier subunit |
| Observed Band | 31kD |
| Calculated Molecular Weight | 31kD |
| Cell Pathway | Cytoplasm |
| Tissue Specificity | In all tissues examined. Highest levels in skeletal muscle. |
| Function | pathway:Sulfur metabolism; glutathione biosynthesis; glutathione from L-cysteine and L-glutamate: step 1/2.,similarity:Belongs to the aldo/keto reductase family. Glutamate--cysteine ligase light chain subfamily.,subunit:Heterodimer of a catalytic heavy chain and a regulatory light chain.,tissue specificity:In all tissues examined. Highest levels in skeletal muscle., |
| Background | Glutamate-cysteine ligase, also known as gamma-glutamylcysteine synthetase, is the first rate limiting enzyme of glutathione synthesis. The enzyme consists of two subunits, a heavy catalytic subunit and a light regulatory subunit. Gamma glutamylcysteine synthetase deficiency has been implicated in some forms of hemolytic anemia. Alternative splicing results in multiple transcript variants |





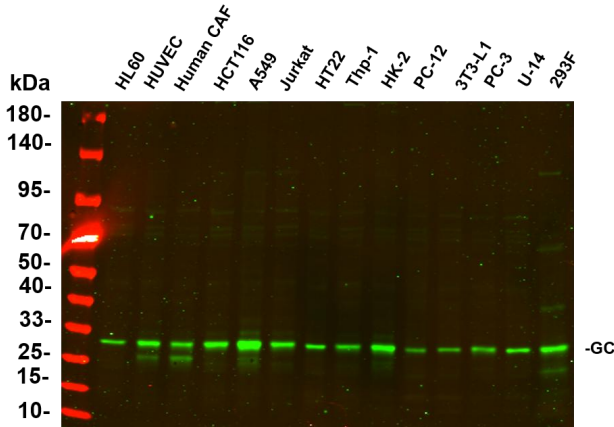
encoding different isoforms. [provided by RefSeq, Apr 2015],

matters needing attention

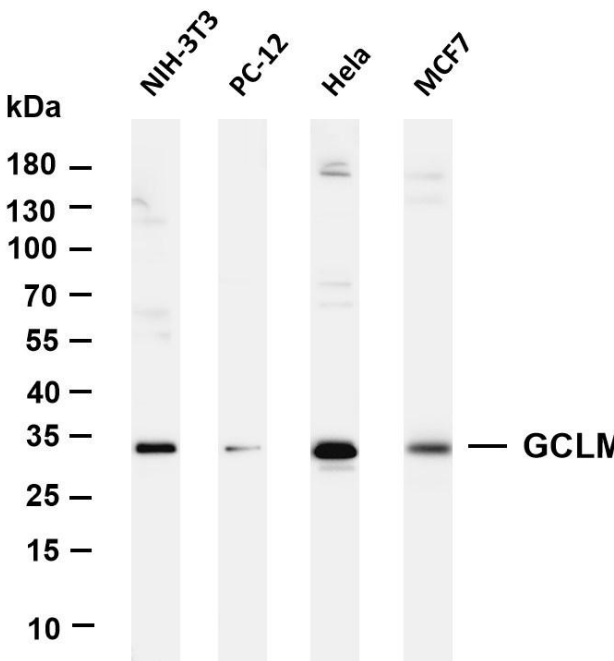
Avoid repeated freezing and thawing!

Usage suggestions

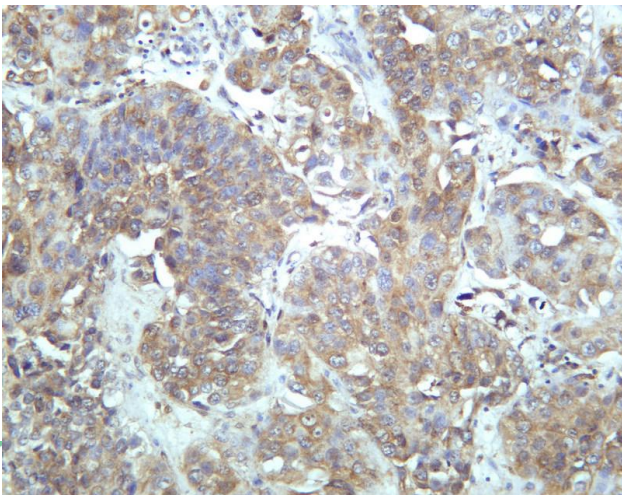
This product can be used in immunological reaction related experiments. For more information, please consult technical personnel.



Various whole cell lysates were separated by 4-20% SDS-PAGE, and the primary antibody was used at 4°C, over night with a 1:2500 dilution. The Dylight 800-conjugated Goat anti-Rabbit antibody



Various whole cell lysates were separated by 4-20% SDS-PAGE, and the membrane was blotted with anti-GCLM antibody. The HRP-conjugated Goat anti-Rabbit IgG(H + L) antibody was used to detect the antibody. Lane 1: NIH-3T3 Lane 2: PC-12 Lane 3: HeLa Lane 4: MCF7 Predicted band size: 31kDa Observed band size: 31kDa



Human bladder carcinoma was stained with Anti-GCLM rabbit antibody

热销产品:

蛋白、一抗、抗体对、ELISA试剂盒、生化试剂盒
CCK8试剂盒、QPCR检测试剂盒

检测服务:

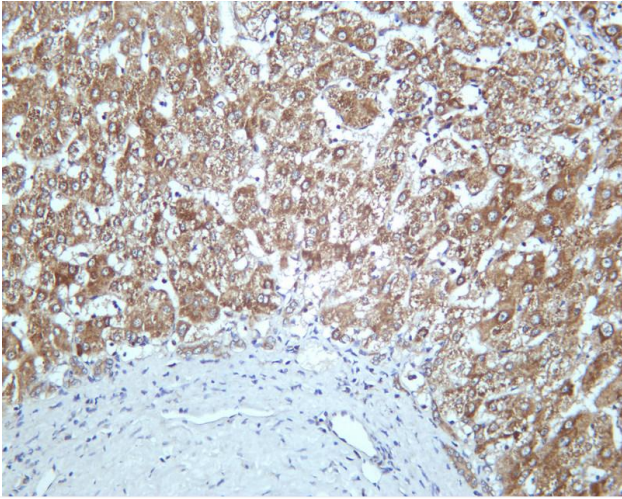
ELISA检测及定制服务 | 生化检测 | PCR、QPCR检测 | WB检测
ICO-IP检测 | 切片 | 染色 | 免疫组化 | 免疫荧光 | 透射电镜全套
| 宏基因组、转录组、基因组、蛋白组、代谢组测序



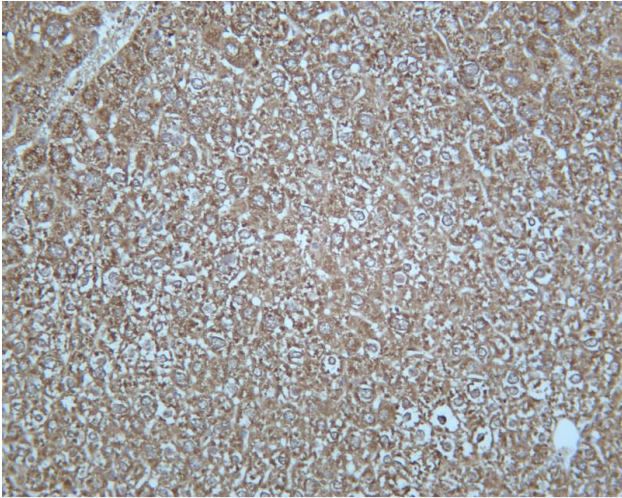
关注官网



关注客服



Human liver was stained with Anti-GCLM rabbit antibody



Mouse liver was stained with Anti-GCLM rabbit antibody

杭州臻优品生物科技有限公司

热销产品:

蛋白、一抗、抗体对、ELISA试剂盒、生化试剂盒
CCK8试剂盒、QPCR检测试剂盒

检测服务:

ELISA检测及定制服务 | 生化检测 | PCR、QPCR检测 | WB检测
ICO-IP检测 | 切片 | 染色 | 免疫组化 | 免疫荧光 | 透射电镜全套
| 宏基因组、转录组、基因组、蛋白组、代谢组测序



关注官网



关注客服