



Rab 5A Rabbit mAb

Catalog No	YP-rAb-18001
Isotype	IgG
Reactivity	Human,Mouse,Rat
Applications	WB,IHC,IF,IP,ELISA
Gene Name	RAB5A
Protein Name	Ras-related protein Rab-5A
Purification Process	Protein A
Specificity	Endogenous
Formulation	PBS, 50% glycerol, 0.05% Proclin 300, 0.05%BSA
Source	Monoclonal, Rabbit,IgG
Dilution	IHC 1:1000-1:4000; WB 1:1000-1:5000; IF 1:200-1:1000; ELISA 1:5000-1:20000; IP 1:50-1:200, Note: For IHC, we suggest antigen retrieval with TE buffer pH 9.0
Concentration	0.5 mg/ml
Purity	≥90%
Storage Stability	-15° C to -25° C/1 year(Do not lower than -25° C)
Synonyms	RAB5A ; RAB5 ; Ras-related protein Rab-5A
Observed Band	24kD
Calculated Molecular Weight	24kD
Cell Pathway	Cytoplasm, Membrane
Tissue Specificity	Brain,Cervix,Cervix carcinoma,Placenta,
Function	enzyme regulation:Regulated by guanine nucleotide exchange factors (GEFs) which promote the exchange of bound GDP for free GTP.,Function:Required for the fusion of plasma membranes and early endosomes.,similarity:Belongs to the small GTPase superfamily. Rab family.,subcellular location:Enriched in stage I melanosomes.,subunit:Binds EEA1. Interacts with RIN1 and GAPVD1, which regulate its pathway, probably by acting as a GEF. Interacts with ALS2CL, UNC84B, ZFYVE20 and RUFY1. Interacts with SGSM1 and SGSM3.,
Background	enzyme regulation:Regulated by guanine nucleotide exchange factors (GEFs) which promote the exchange of bound GDP for free GTP.,function:Required for the fusion of plasma membranes and early endosomes.,similarity:Belongs to the small GTPase superfamily. Rab family.,subcellular location:Enriched in stage I melanosomes.,subunit:Binds EEA1. Interacts with RIN1 and GAPVD1, which





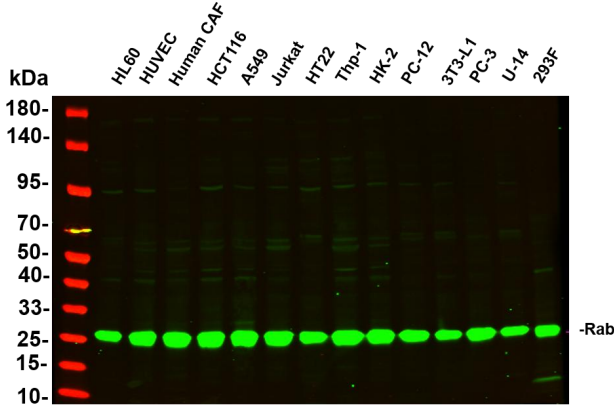
regulate its pathway, probably by acting as a GEF. Interacts with ALS2CL, UNC84B, ZFYVE20 and RUFY1. Interacts with SGSM1 and SGSM3.,

matters needing attention

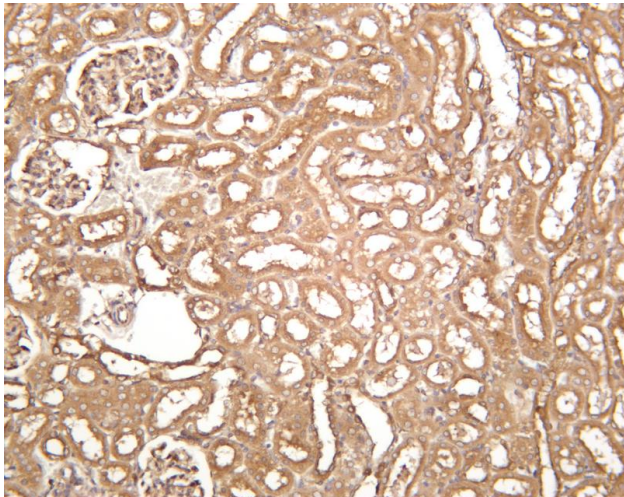
Avoid repeated freezing and thawing!

Usage suggestions

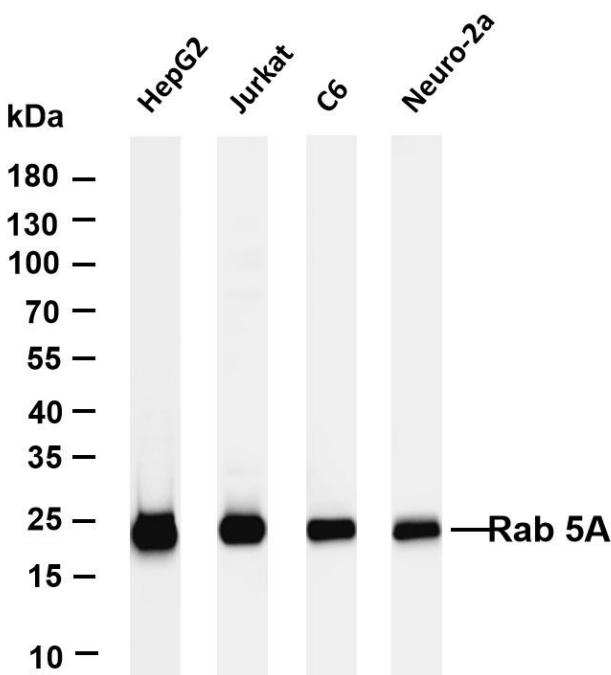
This product can be used in immunological reaction related experiments. For more information, please consult technical personnel.



Various whole cell lysates were separated by 4-20% SDS-PAGE, and the primary antibody was used at 4°C, over night with a 1:2500 dilution. The Dylight 800-conjugated Goat anti-Rabbit antibody



Rat kidney was stained with anti-Rab 5A rabbit antibody



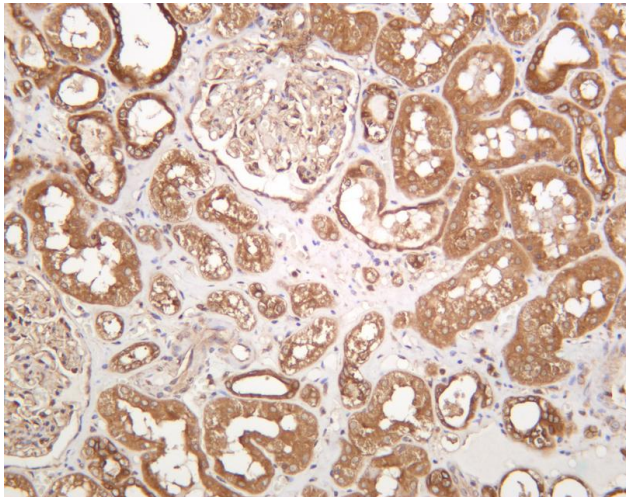
Various whole cell lysates were separated by 4-20% SDS-PAGE, and the membrane was blotted with anti-Rab 5A antibody. The HRP-conjugated Goat anti-Rabbit IgG(H + L) antibody was used to detect the antibody. Lane 1: HepG2 Lane 2: Jurkat Lane 3: C6 Lane 4: Neuro-2a Predicted band size: 24kDa Observed band size: 24kDa



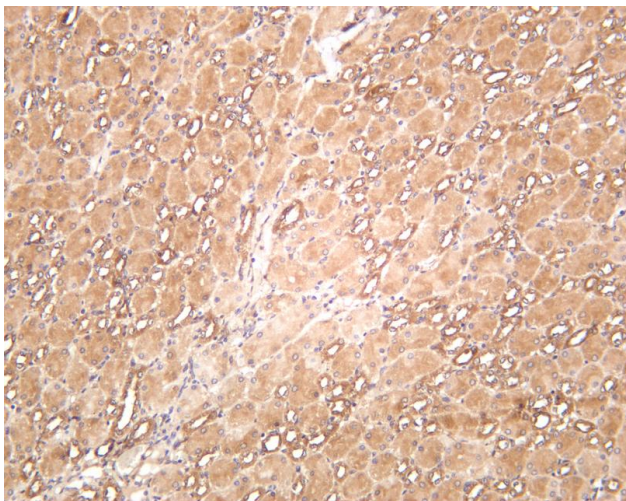
关注官网



关注客服



Human kidney was stained with anti-Rab 5A rabbit antibody



Mouse kidney was stained with anti-Rab 5A rabbit antibody

杭州臻优品生物科技有限公司

热销产品:

蛋白、一抗、抗体对、ELISA试剂盒、生化试剂盒
CCK8试剂盒、QPCR检测试剂盒

检测服务:

ELISA检测及定制服务 | 生化检测 | PCR、QPCR检测 | WB检测
ICO-IP检测 | 切片 | 染色 | 免疫组化 | 免疫荧光 | 透射电镜全套
| 宏基因组、转录组、基因组、蛋白组、代谢组测序



关注官网



关注客服