



# CYP19A1 Rabbit mAb

<b>Catalog No</b>	YP-rAb-17991
<b>Isotype</b>	IgG
<b>Reactivity</b>	Human,Mouse,Rat
<b>Applications</b>	WB,IHC,IF,IP,ELISA
<b>Gene Name</b>	CYP19A1
<b>Protein Name</b>	Cytochrome P450 19A1
<b>Purification Process</b>	Protein A
<b>Specificity</b>	Endogenous
<b>Formulation</b>	PBS, 50% glycerol, 0.05% Proclin 300, 0.05%BSA
<b>Source</b>	Monoclonal, Rabbit,IgG
<b>Dilution</b>	IHC 1:200-1:1000; WB 1:2000-1:10000; IF 1:200-1:1000; ELISA 1:5000-1:20000; IP 1:50-1:200; Note: For IHC, we suggest antigen retrieval with TE buffer pH 9.0
<b>Concentration</b>	0.5 mg/ml
<b>Purity</b>	≥90%
<b>Storage Stability</b>	-15° C to -25° C/1 year(Do not lower than -25° C)
<b>Synonyms</b>	CYP19A1 ; ARO1 ; CYAR ; CYP19 ; Cytochrome P450 19A1 ; Aromatase ; CYPXIX ; Cytochrome P-450AROM ; Estrogen synthase
<b>Observed Band</b>	58kD
<b>Calculated Molecular Weight</b>	58kD
<b>Cell Pathway</b>	Endoplasmic reticulum membrane ; Multi-pass membrane protein . Microsome membrane ; Multi-pass membrane protein .
<b>Tissue Specificity</b>	Widely expressed, including in adult and fetal brain, placenta, skin fibroblasts, adipose tissue and gonads.
<b>Function</b>	Catalytic activity:RH + reduced flavoprotein + O(2) = ROH + oxidized flavoprotein + H(2)O.,cofactor:Heme group.,Disease:Defects in CYP19A1 are a cause of familial gynecomastia [MIM:139300]. This is characterized by an estrogen excess due to an increased aromatase activity.,Disease:Defects in CYP19A1 are the cause of aromatase deficiency (AROD) [MIM:107910]. AROD is a rare disease in which fetal androgens are not converted into estrogens due to placental aromatase deficiency. Thus, pregnant women exhibit a hirsutism, which spontaneously resolves after post-partum. At birth, female babies present with pseudohermaphroditism due to virilization of extern genital organs. In adult females, manifestations include delay of puberty, breast hypoplasia and primary amenorrhoea with multicystic ovaries.,Function:Catalyzes the formation of aromatic C18 estrogens from C19 androgens.,online information:Aromatase

杭州臻优品生物科技有限公司

热销产品:

蛋白、一抗、抗体对、ELISA试剂盒、生化试剂盒  
CCK8试剂盒、QPCR检测试剂盒

检测服务:

ELISA检测及定制服务 | 生化检测 | PCR、QPCR检测 | WB检测  
ICO-IP检测 | 切片 | 染色 | 免疫组化 | 免疫荧光 | 透射电镜全套  
| 宏基因组、转录组、基因组、蛋白组、代谢组测序



关注官网



关注客服



entry,similarity:Belongs to the cytochrome P450 family.,tissue specificity:Brain, placenta and gonads.,

### Background

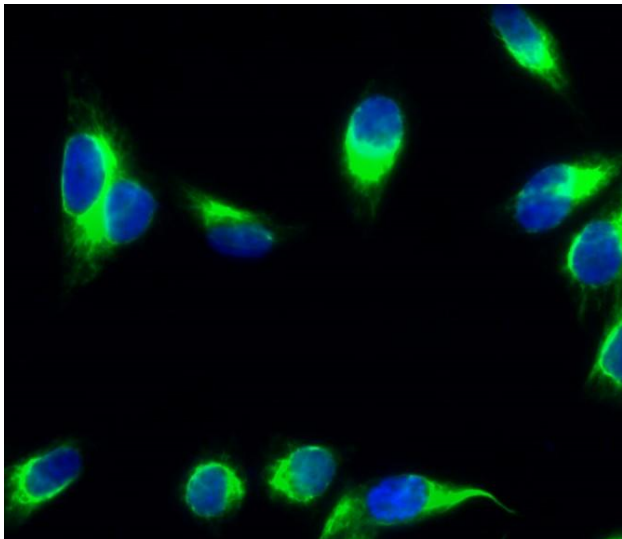
cytochrome P450 family 19 subfamily A member 1(CYP19A1) Homo sapiens This gene encodes a member of the cytochrome P450 superfamily of enzymes. The cytochrome P450 proteins are monooxygenases which catalyze many reactions involved in drug metabolism and synthesis of cholesterol, steroids and other lipids. This protein localizes to the endoplasmic reticulum and catalyzes the last steps of estrogen biosynthesis. Mutations in this gene can result in either increased or decreased aromatase activity; the associated phenotypes suggest that estrogen functions both as a sex steroid hormone and in growth or differentiation. Alternative splicing results in multiple transcript variants. [provided by RefSeq, May 2014],

### matters needing attention

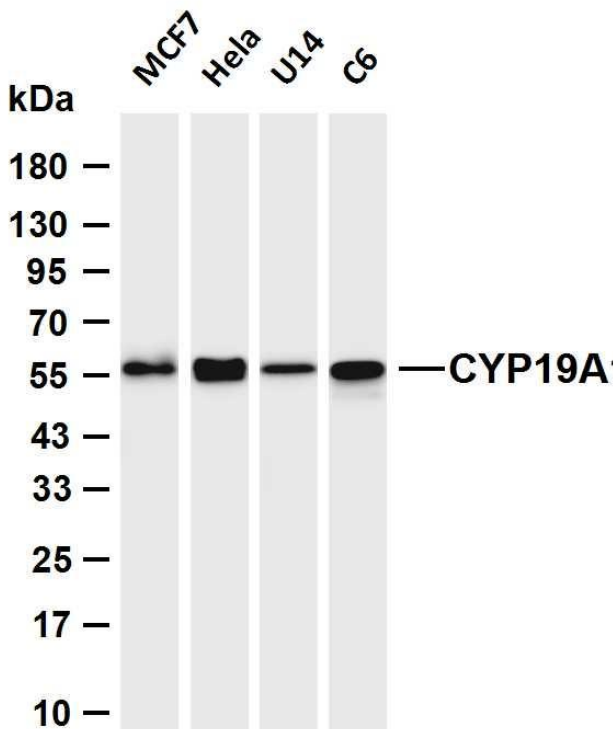
Avoid repeated freezing and thawing!

### Usage suggestions

This product can be used in immunological reaction related experiments. For more information, please consult technical personnel.

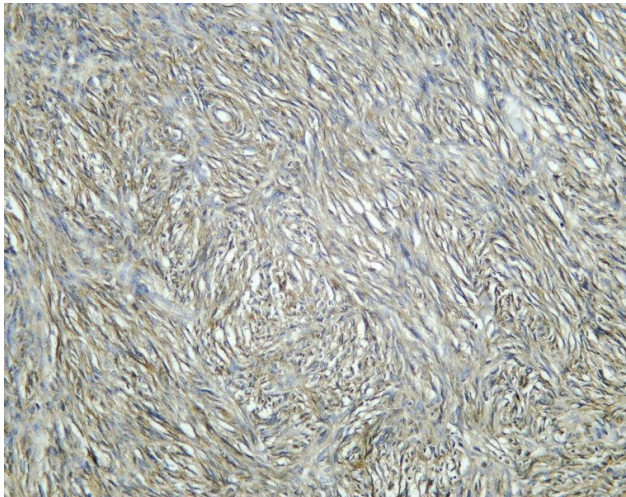


Immunofluorescence analysis of HeLa cell. 1,CYP19A1 Antibody(green) was diluted at 1:200(4° overnight). 2, Goat Anti Rabbit Alexa Fluor 488 Catalog:

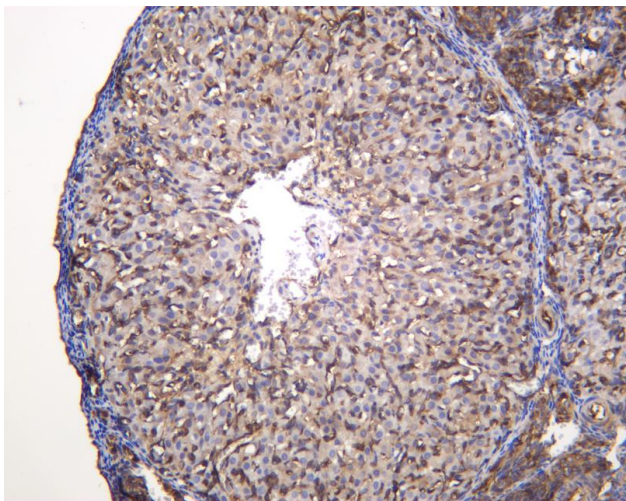


Various whole cell lysates were separated by 4-20% SDS-PAGE, and the membrane was blotted with anti-CYP19A1 antibody. The HRP-conjugated Goat anti-Rabbit IgG (H + L) antibody was used to detect the antibody. Lane 1: MCF7 Lane 2: HeLa Lane 1: U14 Lane 2: C6 Predicted band size: 58kDa Observed band size: 58kDa





Human ovary was stained with anti-CYP19A1 Rabbit antibody



Rat ovary was stained with anti-CYP19A1 Rabbit antibody

