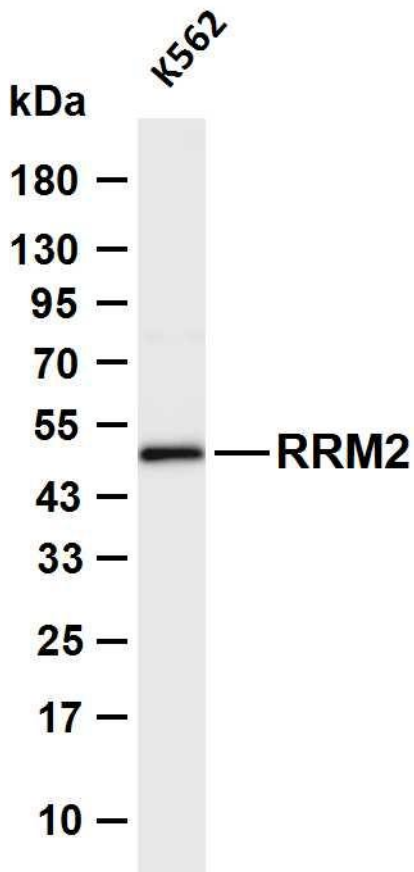




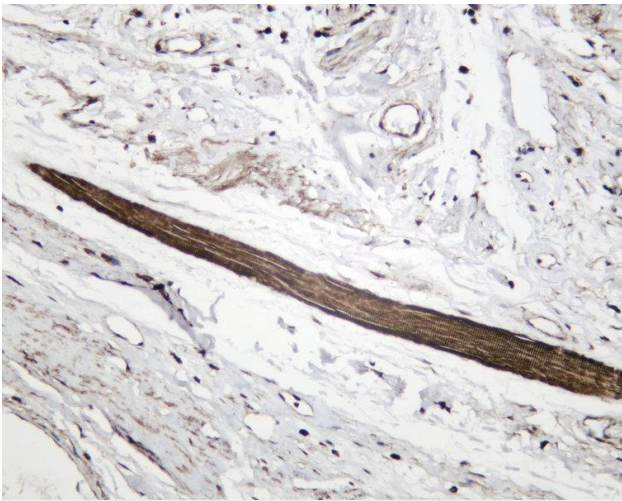
RRM2 Rabbit mAb

Catalog No	YP-rAb-17989
Isotype	IgG
Reactivity	Human
Applications	WB,IHC,IF,IP,ELISA
Gene Name	RRM2 RR2
Protein Name	Ribonucleoside-diphosphate reductase subunit M2
Purification Process	Protein A
Specificity	Endogenous
Formulation	PBS, 50% glycerol, 0.05% Proclin 300, 0.05%BSA
Source	Monoclonal, Rabbit,IgG
Dilution	IHC 1:200-1:1000; WB 1:2000-1:10000; IF 1:200-1:1000; ELISA 1:5000-1:20000; IP 1:50-1:200; Note: For IHC, we suggest antigen retrieval with TE buffer pH 9.0
Concentration	0.5 mg/ml
Purity	≥90%
Storage Stability	-15° C to -25° C/1 year(Do not lower than -25° C)
Synonyms	RIR2 ; Ribonucleoside-diphosphate reductase subunit M2 ; Ribonucleotide reductase small chain ; Ribonucleotide reductase small subunit ;
Observed Band	50kD
Calculated Molecular Weight	45kD
Cell Pathway	Cytoplasm . Nucleus . Localized to the cytoplasm in S phase cells. May localize to the nucleus in G2 phase cells. .
Tissue Specificity	
Function	
Background	
matters needing attention	Avoid repeated freezing and thawing!
Usage suggestions	This product can be used in immunological reaction related experiments. For more information, please consult technical personnel.





Various whole cell lysates were separated by 4-20% SDS-PAGE, and the membrane was blotted with anti-RRM2 antibody. The HRP-conjugated Goat anti-Rabbit IgG (H + L) antibody was used to detect the antibody. Lane 1: K562 Predicted band size: 45kDa Observed band size: 50kDa



Human tonsil was stained with anti-RRM2 Rabbit antibody

