



HGF Rabbit mAb

| | |
|------------------------------------|--|
| Catalog No | YP-rAb-17985 |
| Isotype | IgG |
| Reactivity | Human |
| Applications | WB,IHC,IF,IP,ELISA |
| Gene Name | HGF |
| Protein Name | Hepatocyte growth factor |
| Purification Process | Protein A |
| Specificity | Endogenous |
| Formulation | PBS, 50% glycerol, 0.05% Proclin 300, 0.05%BSA |
| Source | Monoclonal, Rabbit,IgG |
| Dilution | IHC 1:200-1:1000; WB 1:1000-1:5000; IF 1:200-1:1000; ELISA 1:5000-1:20000; IP 1:50-1:200; Note: For IHC, we suggest antigen retrieval with TE buffer pH 9.0 |
| Concentration | 0.5 mg/ml |
| Purity | ≥90% |
| Storage Stability | -15° C to -25° C/1 year(Do not lower than -25° C) |
| Synonyms | HGF ; HPTA ; Hepatocyte growth factor ; Hepatopoietin-A ; Scatter factor ; SF |
| Observed Band | 85kD |
| Calculated Molecular Weight | 83kD |
| Cell Pathway | extracellular region,extracellular space,membrane,platelet alpha granule lumen, |
| Tissue Specificity | Brain,Embryonic fibroblast,Leukocyte,Liver,Lung fibroblast,Placenta, |
| Function | HGF is a potent mitogen for mature parenchymal hepatocyte cells, seems to be an hepatotrophic factor, and acts as growth factor for a broad spectrum of tissues and cell types. It has no detectable protease activity. online information:Hepatocyte growth factor entry,similarity:Belongs to the peptidase S1 family. Plasminogen subfamily.,similarity:Contains 1 PAN domain.,similarity:Contains 1 peptidase S1 domain.,similarity:Contains 4 kringle domains.,subunit:Dimer of an alpha chain and a beta chain linked by a disulfide bond., |
| Background | This gene encodes a protein that binds to the hepatocyte growth factor receptor to regulate cell growth, cell motility and morphogenesis in numerous cell and tissue types. Alternative splicing results in multiple transcript variants, at least one of which encodes a preproprotein that is proteolytically processed to generate alpha |





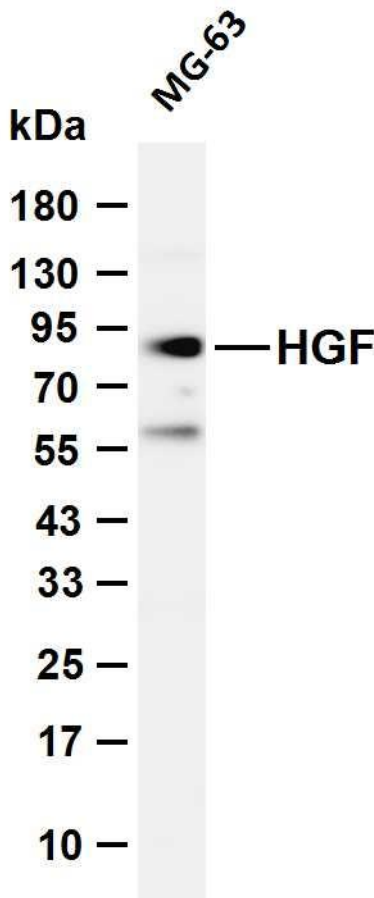
and beta chains, which form the mature heterodimer. This protein is secreted by mesenchymal cells and acts as a multi-functional cytokine on cells of mainly epithelial origin. This protein also plays a role in angiogenesis, tumorigenesis, and tissue regeneration. Although the encoded protein is a member of the peptidase S1 family of serine proteases, it lacks peptidase activity. Mutations in this gene are associated with nonsyndromic hearing loss. [provided by RefSeq, Nov 2015],

matters needing attention

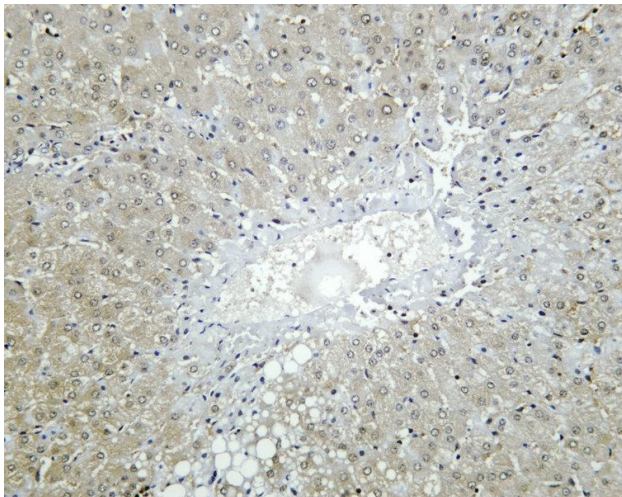
Avoid repeated freezing and thawing!

Usage suggestions

This product can be used in immunological reaction related experiments. For more information, please consult technical personnel.



Various whole cell lysates were separated by 4-20% SDS-PAGE, and the membrane was blotted with anti-HGF antibody. The HRP-conjugated Goat anti-Rabbit IgG (H + L) antibody was used to detect the antibody. Lane 1: MG-63 Predicted band size: 83kDa Observed band size: 85kDa



Human liver was stained with anti-HGF Rabbit antibody

杭州臻优品生物科技有限公司

热销产品:

蛋白、一抗、抗体对、ELISA试剂盒、生化试剂盒
CCK8试剂盒、QPCR检测试剂盒

检测服务:

ELISA检测及定制服务 | 生化检测 | PCR、QPCR检测 | WB检测
ICO-IP检测 | 切片 | 染色 | 免疫组化 | 免疫荧光 | 透射电镜全套
| 宏基因组、转录组、基因组、蛋白组、代谢组测序



关注官网



关注客服