



# NEK2 Rabbit mAb

<b>Catalog No</b>	YP-rAb-17982
<b>Isotype</b>	IgG
<b>Reactivity</b>	Human,Mouse,Rat
<b>Applications</b>	WB,IF,ELISA
<b>Gene Name</b>	NEK2 NEK2A NLK1
<b>Protein Name</b>	Serine/threonine-protein kinase Nek2 (HSPK 21) (Never in mitosis A-related kinase 2) (NimA-related protein kinase 2) (NimA-like protein kinase 1)
<b>Purification Process</b>	Protein A
<b>Specificity</b>	Endogenous
<b>Formulation</b>	PBS, 50% glycerol, 0.05% Proclin 300, 0.05%BSA
<b>Source</b>	Monoclonal, Rabbit,IgG
<b>Dilution</b>	WB 1:2000-1:10000; IF 1:200-1:1000; ELISA 1:5000-1:20000;
<b>Concentration</b>	0.5 mg/ml
<b>Purity</b>	≥90%
<b>Storage Stability</b>	-15° C to -25° C/1 year(Do not lower than -25° C)
<b>Synonyms</b>	
<b>Observed Band</b>	50kD
<b>Calculated Molecular Weight</b>	52kD
<b>Cell Pathway</b>	[Isoform 1]: Nucleus. Nucleus, nucleolus . Cytoplasm. Cytoplasm, cytoskeleton, microtubule organizing center, centrosome . Cytoplasm, cytoskeleton, spindle pole. Chromosome, centromere, kinetochore. Chromosome, centromere . STK3/MST2 and SAV1 are required for its targeting to the centrosome. Colocalizes with SGO1 and MAD1L1 at the kinetochore. Not associated with kinetochore in the interphase but becomes associated with it upon the breakdown of the nuclear envelope. Has a nucleolar targeting/ retention activity via a coiled-coil domain at the C-terminal end.; [Isoform 2]: Cytoplasm. Predominantly cytoplasmic.; [Isoform 4]: Nucleus. Cytoplasm, cytoskeleton, microtubule organizing center, centrosome. Predominantly nuclear.
<b>Tissue Specificity</b>	Isoform 1 and isoform 2 are expressed in peripheral blood T-cells and a wide variety of transformed cell types. Isoform 1 and isoform 4 are expressed in the testis. Up-regulated in various cancer cell lines, as well as primary breast tumors.
<b>Function</b>	Catalytic activity:ATP + a protein = ADP + a phosphoprotein.,cofactor:Magnesium.,developmental stage:Accumulates throughout S phase and shows maximal levels in late G2. This expression pattern is highly reminiscent of that of A and B cyclins. Expression of both isoform 1 and

杭州臻优品生物科技有限公司

热销产品:

蛋白、一抗、抗体对、ELISA试剂盒、生化试剂盒  
CCK8试剂盒、QPCR检测试剂盒

检测服务:

ELISA检测及定制服务 | 生化检测 | PCR、QPCR检测 | WB检测  
ICO-IP检测 | 切片 | 染色 | 免疫组化 | 免疫荧光 | 透射电镜全套  
| 宏基因组、转录组、基因组、蛋白组、代谢组测序



关注官网



关注客服



isoform 2 is low in the G1 phase and increases in the S/G2 phases. Isoform 1 is absent from cells arrested in the G2/M prometaphase, whereas isoform 2 remains present. Function: Protein kinase that is involved in mitotic regulation. May have a role at the G2-M transition. May also play a role in meiosis. Isoform 1 but not isoform 2 appears to play a role in centrosome splitting. Isoform 1 phosphorylates and activates NEK11 in G1/S-arrested cells. Isoform 2, which is not present in the nucleolus, does not. PTM: It is unsure whether Thr-170 or Ser-171 is phosphorylated. Similarity: Belongs to the protein kinase superfamily. NEK Ser/Thr protein kinase family. NIMA subfamily. Similarity: Contains 1 protein kinase domain. Subcellular location: Has a nucleolar targeting/retention activity via a coiled-coil domain at the C-terminal end. Subcellular location: Predominantly cytoplasmic. Subunit: Interacts with TERF1. Isoform 1 and isoform 2 form homo- and heterodimers. Tissue specificity: Isoform 1 and isoform 2 are expressed in peripheral blood T-cells and a wide variety of transformed cell types.

### Background

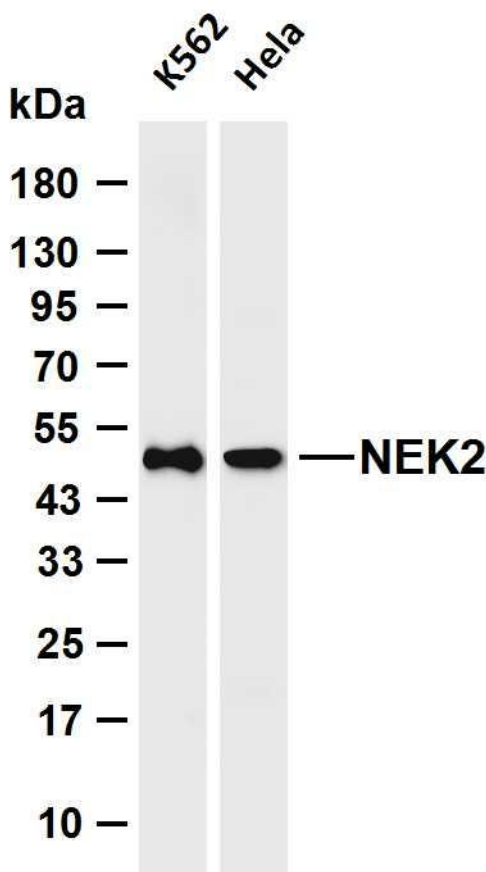
This gene encodes a serine/threonine-protein kinase that is involved in mitotic regulation. This protein is localized to the centrosome, and undetectable during G1 phase, but accumulates progressively throughout the S phase, reaching maximal levels in late G2 phase. Alternatively spliced transcript variants encoding different isoforms with distinct C-termini have been noted for this gene. [provided by RefSeq, Feb 2011],

### matters needing attention

Avoid repeated freezing and thawing!

### Usage suggestions

This product can be used in immunological reaction related experiments. For more information, please consult technical personnel.



Various whole cell lysates were separated by 4-20% SDS-PAGE, and the membrane was blotted with anti-NEK2 antibody. The HRP-conjugated Goat anti-Rabbit IgG (H + L) antibody was used to detect the antibody. Lane 1: K562 Lane 2: HeLa Predicted band size: 52kDa Observed band size: 50kDa

