



GRK1 Rabbit mAb

Catalog No	YP-rAb-17980
Isotype	IgG
Reactivity	Human,Mouse,Rat
Applications	WB,IF,ELISA
Gene Name	GRK1
Protein Name	Rhodopsin kinase
Purification Process	Protein A
Specificity	Endogenous
Formulation	PBS, 50% glycerol, 0.05% Proclin 300, 0.05%BSA
Source	Monoclonal, Rabbit,IgG
Dilution	WB 1:2000-1:10000; IF 1:200-1:1000; ELISA 1:5000-1:20000;
Concentration	0.5 mg/ml
Purity	≥90%
Storage Stability	-15° C to -25° C/1 year(Do not lower than -25° C)
Synonyms	GRK1 ; RHOK ; Rhodopsin kinase ; RK ; G protein-coupled receptor kinase 1
Observed Band	64kD
Calculated Molecular Weight	64kD
Cell Pathway	Membrane ; Lipid-anchor . Cell projection, cilium, photoreceptor outer segment . Subcellular location is not affected by light or dark conditions. .
Tissue Specificity	Retinal-specific. Expressed in rods and cones cells.
Function	Catalytic activity:ATP + [rhodopsin] = ADP + [rhodopsin] phosphate.,Disease:Defects in GRK1 are a cause of congenital stationary night blindness Oguchi type (CSNBO) [MIM:258100]; also known as Oguchi disease. Congenital stationary night blindness is a non-progressive retinal disorder characterized by impaired night vision. CSNBO is an autosomal recessive form associated with fundus discoloration and abnormally slow dark adaptation.,Function:Phosphorylates rhodopsin thereby initiating its deactivation.,online information:Retina International's Scientific Newsletter,PTM:Autophosphorylated.,PTM:Farnesylation is required for full activity.,similarity:Belongs to the protein kinase superfamily. AGC Ser/Thr protein kinase family. GPRK subfamily.,similarity:Contains 1 AGC-kinase C-terminal domain.,similarity:Contains 1 protein kinase domain.,similarity:Contains 1 RGS domain.,tissue specificity:Retina and pineal gland.,





Background

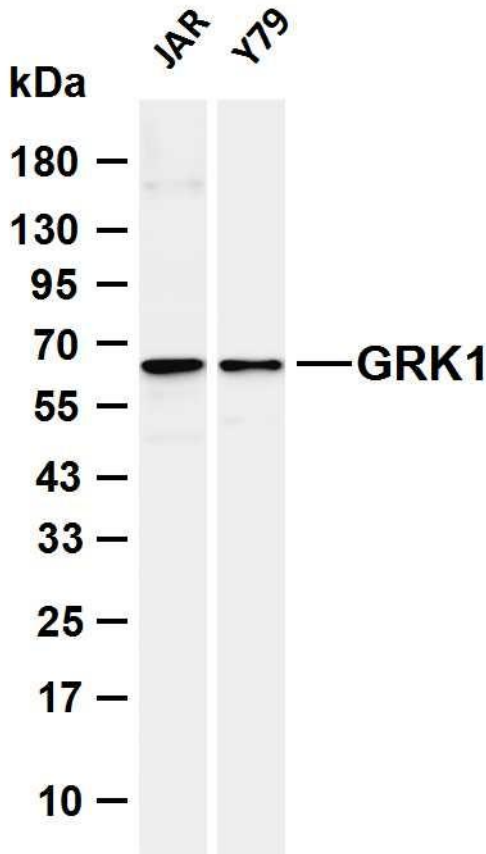
This gene encodes a member of the guanine nucleotide-binding protein (G protein)-coupled receptor kinase subfamily of the Ser/Thr protein kinase family. The protein phosphorylates rhodopsin and initiates its deactivation. Defects in GRK1 are known to cause Oguchi disease 2 (also known as stationary night blindness Oguchi type-2). [provided by RefSeq, Jul 2008],

matters needing attention

Avoid repeated freezing and thawing!

Usage suggestions

This product can be used in immunological reaction related experiments. For more information, please consult technical personnel.



Various whole cell lysates were separated by 4-20% SDS-PAGE, and the membrane was blotted with anti-GRK1 antibody. The HRP-conjugated Goat anti-Rabbit IgG (H + L) antibody was used to detect the antibody. Lane 1: JAR Lane 2: Y79 Predicted band size: 64kDa Observed band size: 64kDa

