



# EpCAM Rabbit mAb

<b>Catalog No</b>	YP-rAb-17976
<b>Isotype</b>	IgG
<b>Reactivity</b>	Human,Mouse,Rat
<b>Applications</b>	WB,IHC,IF,IP,ELISA
<b>Gene Name</b>	EPCAM GA733-2 M1S2 M4S1 MIC18 TACSTD1 TROP1
<b>Protein Name</b>	Epithelial cell adhesion molecule
<b>Purification Process</b>	Protein A
<b>Specificity</b>	Endogenous
<b>Formulation</b>	PBS, 50% glycerol, 0.05% Proclin 300, 0.05%BSA
<b>Source</b>	Monoclonal, Rabbit,IgG
<b>Dilution</b>	IHC 1:200-1:1000; WB 1:1000-1:5000; IF 1:200-1:1000; ELISA 1:5000-1:20000; IP 1:50-1:200, Note: For IHC, we suggest antigen retrieval with TE buffer pH 9.0
<b>Concentration</b>	0.5 mg/ml
<b>Purity</b>	≥90%
<b>Storage Stability</b>	-15° C to -25° C/1 year(Do not lower than -25° C)
<b>Synonyms</b>	EPCAM ; GA733-2 ; M1S2 ; M4S1 ; MIC18 ; TACSTD1 ; TROP1 ; Epithelial cell adhesion molecule ; Ep-CAM ; Adenocarcinoma-associated antigen ; Cell surface glycoprotein Trop-1 ; Epithelial cell surface antigen ; Epithelial glycoprotein ; EGP ; Epithelial gly;CD326
<b>Observed Band</b>	40kD
<b>Calculated Molecular Weight</b>	35kD
<b>Cell Pathway</b>	Membrane
<b>Tissue Specificity</b>	Highly and selectively expressed by undifferentiated rather than differentiated embryonic stem cells (ESC). Levels rapidly diminish as soon as ESC's differentiate (at protein levels). Expressed in almost all epithelial cell membranes but not on mesodermal or neural cell membranes. Found on the surface of adenocarcinoma.
<b>Function</b>	
<b>Background</b>	This gene encodes a carcinoma-associated antigen and is a member of a family that includes at least two type I membrane proteins. This antigen is expressed on most normal epithelial cells and gastrointestinal carcinomas and functions as a homotypic calcium-independent cell adhesion molecule. The antigen is being





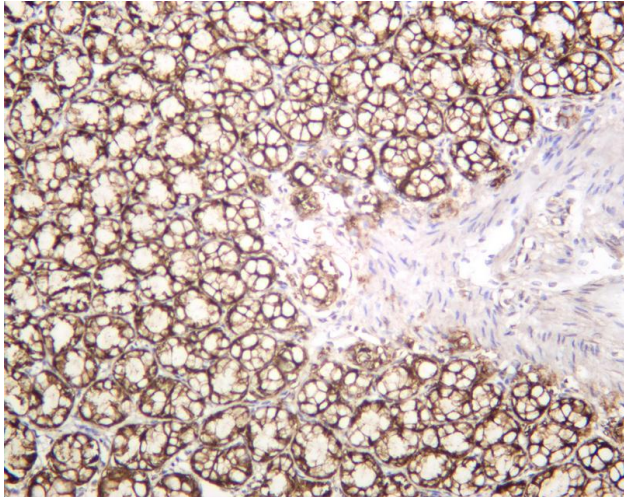
used as a target for immunotherapy treatment of human carcinomas. Mutations in this gene result in congenital tufting enteropathy. [provided by RefSeq, Dec 2008],

**matters needing attention**

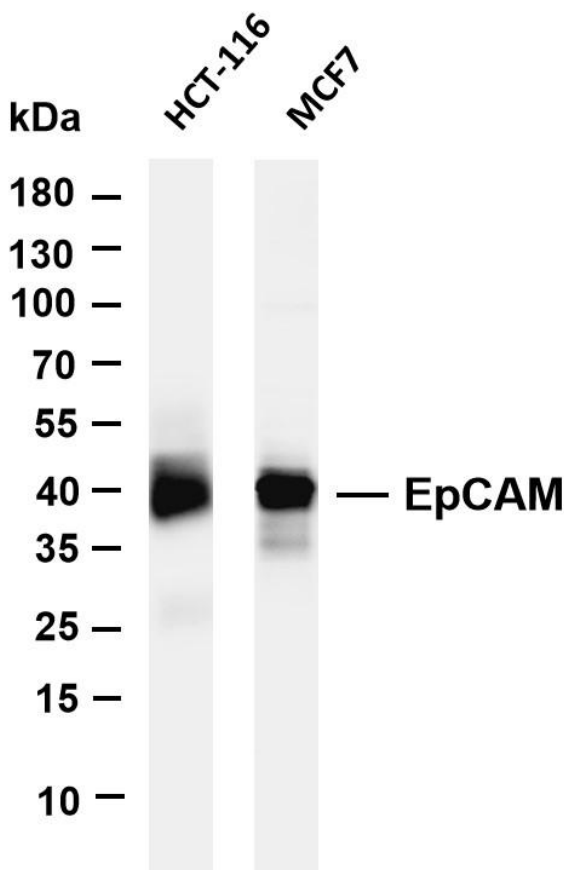
Avoid repeated freezing and thawing!

**Usage suggestions**

This product can be used in immunological reaction related experiments. For more information, please consult technical personnel.

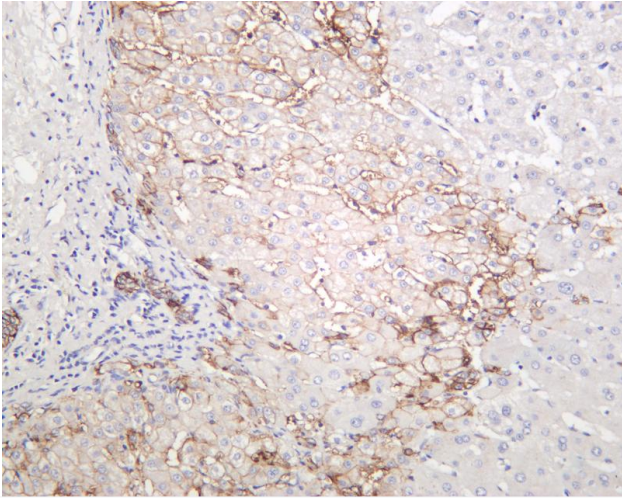


Rat colon was stained with anti-EpCAM rabbit antibody

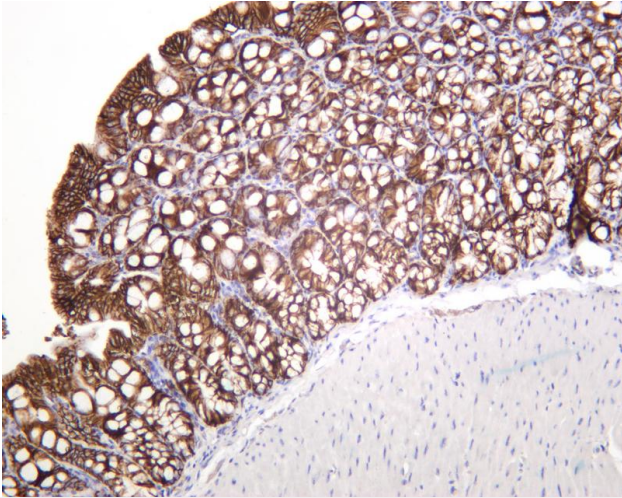


Various whole cell lysates were separated by 4-20% SDS-PAGE, and the membrane was blotted with anti-EpCAM antibody. The HRP-conjugated Goat anti-Rabbit IgG(H + L) antibody was used to detect the antibody. Lane 1: HCT-116 Lane 2: MCF7 Predicted band size: 35kDa Observed band size: 40kDa

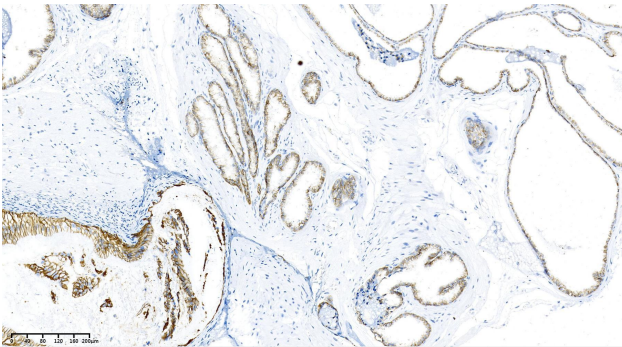




Human liver was stained with anti-EpCAM rabbit antibody



Mouse colon was stained with anti-EpCAM rabbit antibody



Rat prostate was stained with anti-EpCAM Rabbit antibody

## 杭州臻优品生物科技有限公司

### 热销产品:

蛋白、一抗、抗体对、ELISA试剂盒、生化试剂盒  
CCK8试剂盒、QPCR检测试剂盒

### 检测服务:

ELISA检测及定制服务 | 生化检测 | PCR、QPCR检测 | WB检测  
ICO-IP检测 | 切片 | 染色 | 免疫组化 | 免疫荧光 | 透射电镜全套  
| 宏基因组、转录组、基因组、蛋白组、代谢组测序



关注官网



关注客服