



Iba1 Rabbit mAb

Catalog No	YP-rAb-17975
Isotype	IgG
Reactivity	Human,Mouse,Rat
Applications	WB,IHC,IF,IP,ELISA
Gene Name	
Protein Name	AIF1 G1 IBA1
Purification Process	Protein A
Specificity	Endogenous
Formulation	PBS, 50% glycerol, 0.05% Proclin 300, 0.05%BSA
Source	Monoclonal, Rabbit,IgG
Dilution	IHC 1:2000-1:4000; WB 1:1000-1:5000; IF 1:200-1:1000; ELISA 1:5000-1:20000; IP 1:50-1:200, Note: For IHC, we suggest antigen retrieval with TE buffer pH 9.0
Concentration	0.5 mg/ml
Purity	≥90%
Storage Stability	-15° C to -25° C/1 year(Do not lower than -25° C)
Synonyms	AIF 1 ; AIF-1 ; Aif1 ; AIF1 protein ; AIF1_HUMAN ; Allograft inflammatory factor 1 ; Allograft inflammatory factor 1 splice variant G ; allograft inflammatory factor-1 splice variant Hara-1 ; balloon angioplasty responsive transcription ; BART 1 ; G1 ; G1 putative splice variant of allograft inflamatory factor 1 ; IBA 1 ; IBA1 ; interferon gamma responsive transcript ; Interferon responsive transcript 1 ; interferon responsive transcript factor 1 ; Ionized calcium binding adapter molecule 1 ; Ionized calcium-binding adapter molecule 1 ; ionized calcium-binding adapter molecule ; IRT 1 ; IRT1 ; Microglia response factor ; MRF1 ; Protein g1 ;
Observed Band	17kD
Calculated Molecular Weight	17kD
Cell Pathway	Cytoplasm
Tissue Specificity	Detected in T-lymphocytes and peripheral blood mononuclear cells.
Function	May play a role in macrophage activation and function.,PTM:Phosphorylated on serine residues.,similarity:Contains 2 EF-hand domains.,





Background

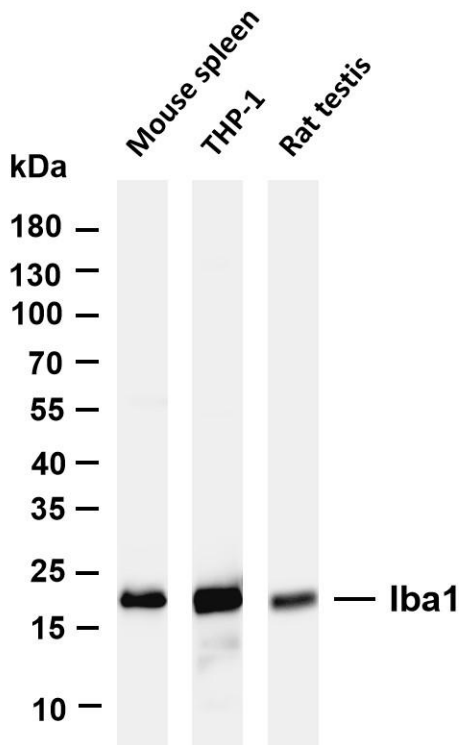
This gene encodes a protein that binds actin and calcium. This gene is induced by cytokines and interferon and may promote macrophage activation and growth of vascular smooth muscle cells and T-lymphocytes. Polymorphisms in this gene may be associated with systemic sclerosis. Alternative splicing results in multiple transcript variants, but the full-length and coding nature of some of these variants is not certain. [provided by RefSeq, Jan 2016],

matters needing attention

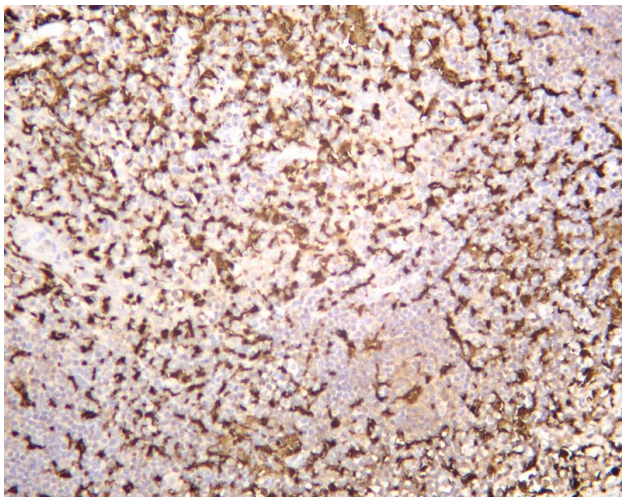
Avoid repeated freezing and thawing!

Usage suggestions

This product can be used in immunological reaction related experiments. For more information, please consult technical personnel.



Various whole cell lysates were separated by 4-20% SDS-PAGE, and the membrane was blotted with anti-Iba1 antibody. The HRP-conjugated Goat anti-Rabbit IgG(H + L) antibody was used to detect the antibody. Lane 1: Mouse spleen Lane 2: THP-1 Lane 3: Rat testis
Predicted band size: 16kDa Observed band size: 16kDa



Human tonsil was stained with anti-Iba1 rabbit antibody

杭州臻优品生物科技有限公司

热销产品:

蛋白、一抗、抗体对、ELISA试剂盒、生化试剂盒
CCK8试剂盒、QPCR检测试剂盒

检测服务:

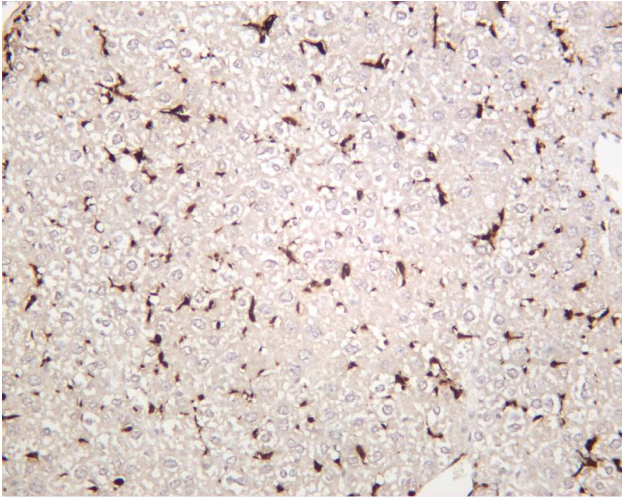
ELISA检测及定制服务 | 生化检测 | PCR、QPCR检测 | WB检测
ICO-IP检测 | 切片 | 染色 | 免疫组化 | 免疫荧光 | 透射电镜全套
| 宏基因组、转录组、基因组、蛋白组、代谢组测序



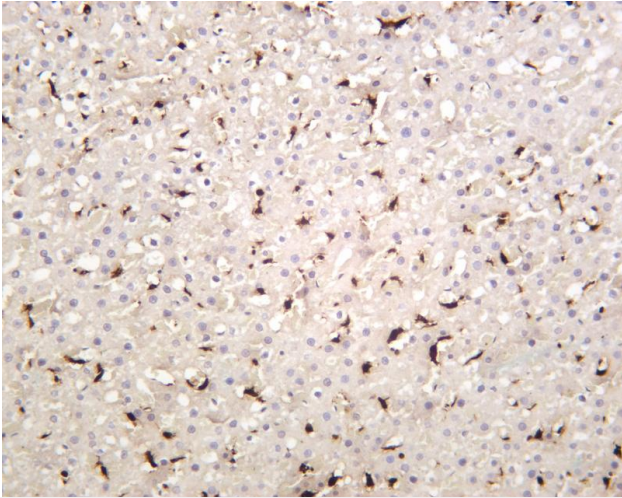
关注官网



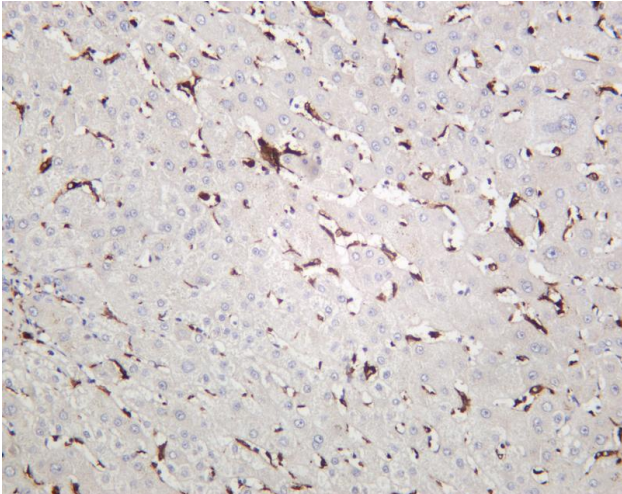
关注客服



Mouse liver was stained with anti-Iba1 rabbit antibody



Rat liver was stained with anti-Iba1 rabbit antibody



Human liver was stained with anti-Iba1 rabbit antibody

