



p70 S6 Kinase Rabbit mAb

Catalog No	YP-rAb-17967
Isotype	IgG
Reactivity	Human,Mouse,Rat,Pig
Applications	WB,IHC,IF,IP,ELISA
Gene Name	RPS6KB1 STK14A P70S6K
Protein Name	Ribosomal protein S6 kinase beta-1
Purification Process	Protein A
Specificity	Endogenous
Formulation	PBS, 50% glycerol, 0.05% Proclin 300, 0.05%BSA
Source	Monoclonal, Rabbit,IgG
Dilution	IHC 1:200-1:1000; WB 1:1000-1:5000; IF 1:200-1:1000; ELISA 1:5000-1:20000; IP 1:50-1:200, Note: For IHC, we suggest antigen retrieval with TE buffer pH 9.0
Concentration	0.5 mg/ml
Purity	≥90%
Storage Stability	-15° C to -25° C/1 year(Do not lower than -25° C)
Synonyms	RPS6KB1 ; STK14A ; Ribosomal protein S6 kinase beta-1 ; S6K-beta-1 ; S6K1 ; 70 kDa ribosomal protein S6 kinase 1 ; P70S6K1 ; p70-S6K 1 ; Ribosomal protein S6 kinase I ; Serine/threonine-protein kinase 14A ; p70 ribosomal S6 kinase alpha ; p70 S6 kinas
Observed Band	70kD
Calculated Molecular Weight	59kD
Cell Pathway	Cytoplasm
Tissue Specificity	Widely expressed.
Function	Catalytic activity:ATP + a protein = ADP + a phosphoprotein.,enzyme regulation:Activation by serine/threonine phosphorylation and protein kinase C, inactivated by type 2A phosphatase.,Function:Phosphorylates specifically ribosomal protein S6 in response to insulin or several classes of mitogens.,similarity:Belongs to the protein kinase superfamily.,similarity:Belongs to the protein kinase superfamily. AGC Ser/Thr protein kinase family. S6 kinase subfamily.,similarity:Contains 1 AGC-kinase C-terminal domain.,similarity:Contains 1 protein kinase domain.,subunit:Interacts with PPP1R9A/neurabin-1.,tissue specificity:Widely expressed.,





Background

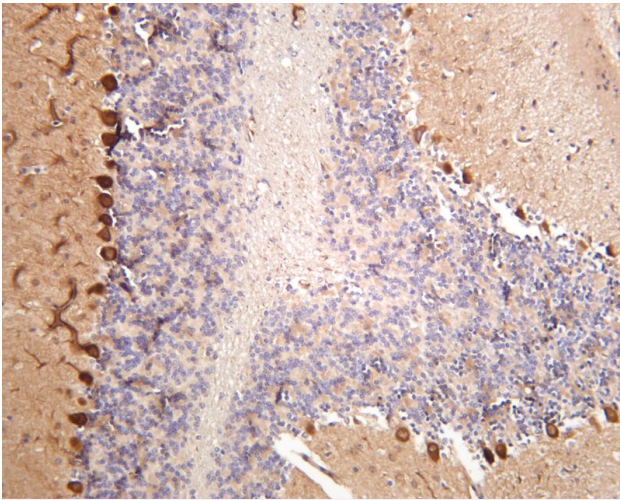
ribosomal protein S6 kinase B1(RPS6KB1) Homo sapiens This gene encodes a member of the ribosomal S6 kinase family of serine/threonine kinases. The encoded protein responds to mTOR (mammalian target of rapamycin) signaling to promote protein synthesis, cell growth, and cell proliferation. Activity of this gene has been associated with human cancer. Alternatively spliced transcript variants have been observed. The use of alternative translation start sites results in isoforms with longer or shorter N-termini which may differ in their subcellular localizations. There are two pseudogenes for this gene on chromosome 17. [provided by RefSeq, Jan 2013],

matters needing attention

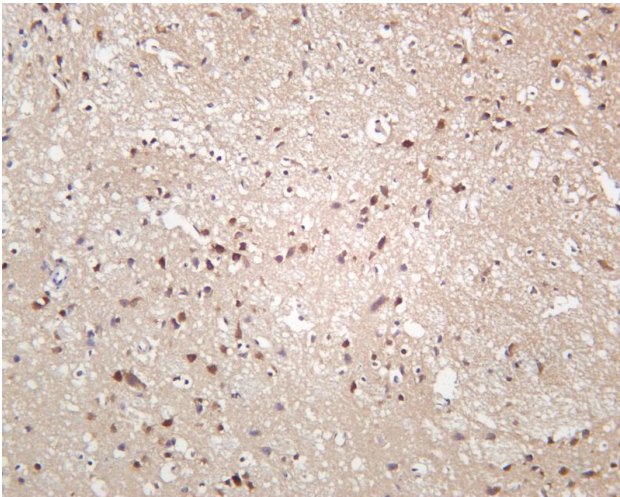
Avoid repeated freezing and thawing!

Usage suggestions

This product can be used in immunological reaction related experiments. For more information, please consult technical personnel.

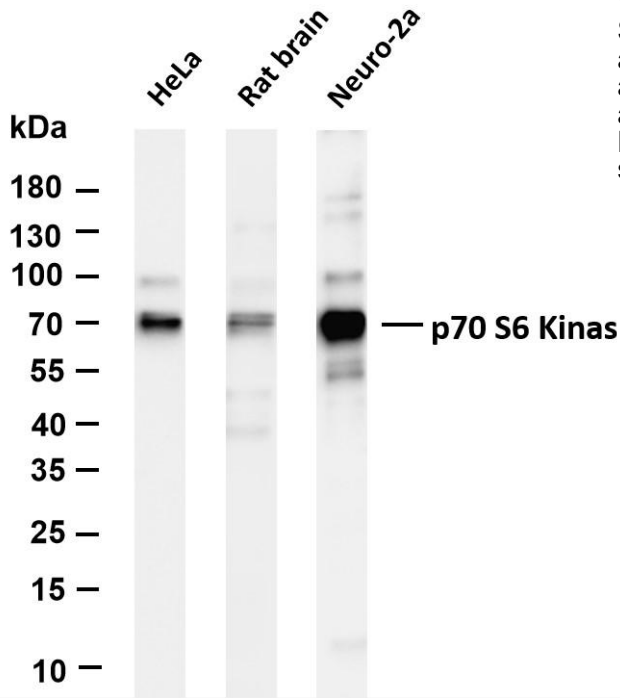


Mouse brain was stained with anti-S6K1 rabbit antibody

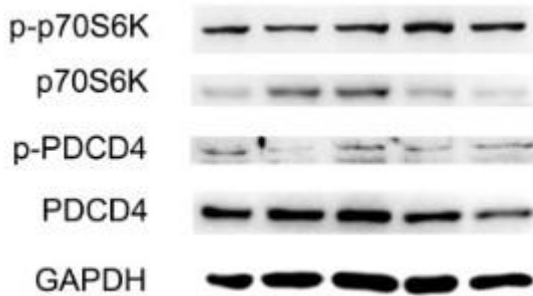


Rat brain was stained with anti-S6K1 rabbit antibody

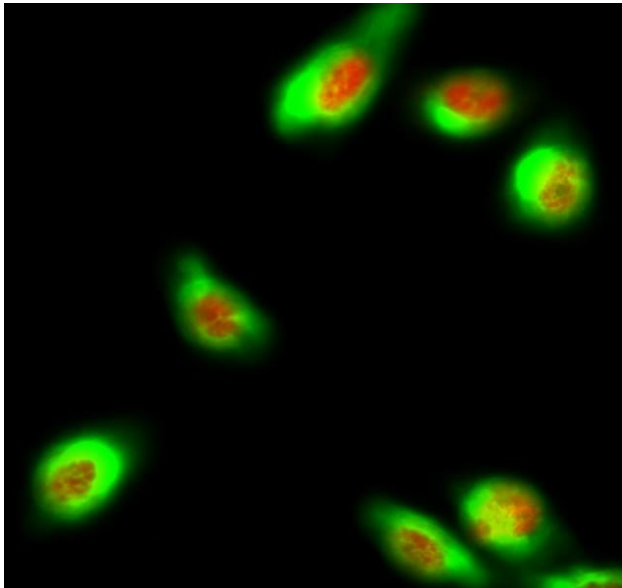




Various whole cell lysates were separated by 4-20% SDS-PAGE, and the membrane was blotted with anti-S6K1 antibody. The HRP-conjugated Goat anti-Rabbit IgG(H + L) antibody was used to detect the antibody. Lane 1: HeLa Lane 2: Rat brain Lane 3: Neuro-2a Predicted band size: 59kDa Observed band size: 70kDa



Ge, Cheng, et al. "Atheroprotective Pulsatile Flow Induces Ubiquitin-Proteasome - Mediated Degradation of Programmed Cell Death 4 in Endothelial Cells." PloS one 9.3 (2014): e91564.



Immunofluorescence analysis of HeLa cell. 1, p70 S6 kinase α Antibody(red) was diluted at 1:200(4^o overnight). CK7 Monoclonal Antibody(12D7)(green) was diluted at 1:200(4^o overnight). 2, Goat Anti Rabbit Alexa Fluor 594 Catalog:RS3611 was diluted at 1:1000(room temperature, 50min). Goat Anti Mouse Alexa Fluor 488 Catalog:RS3208 was diluted at 1:1000(room temperature, 50min).

