



Chromogranin A Rabbit mAb

Catalog No	YP-rAb-17966
Isotype	IgG
Reactivity	Human,Mouse,Rat
Applications	WB,IHC,IF,IP,ELISA
Gene Name	CHGA
Protein Name	beta Granin;betagranin (N-terminal fragment of chromogranin A);catestatin;CgA;CHG A;Chga;chromofungin;Chromogranin A;Chromogranin A parathyroid secretory protein 1;Chromogranin A precursor;ChromograninA;CMGA_HUMAN;ER-37;Pancreastatin;Parastatin;Parathyroid secretory protein 1;Pituitary secretory protein I;Secretory protein I;SP I;SP-I;SP1;SPI;vasostatin 2;Vasostatin;Vasostatin I;Vasostatin II;vasostatin-2
Purification Process	Protein A
Specificity	Endogenous
Formulation	PBS, 50% glycerol, 0.05% Proclin 300, 0.05%BSA
Source	Monoclonal, Rabbit,IgG
Dilution	IHC 1:200-1:1000; WB 1:1000-1:5000; IF 1:200-1:1000; ELISA 1:5000-1:20000; IP 1:50-1:200, Note: For IHC, we suggest antigen retrieval with TE buffer pH 9.0
Concentration	0.5 mg/ml
Purity	≥90%
Storage Stability	-15° C to -25° C/1 year(Do not lower than -25° C)
Synonyms	beta Granin ; betagranin ; N-terminal fragment of chromogranin A ; catestatin ; CgA ; CHG A ; Chga ; chromofungin ; Chromogranin A ; Chromogranin A parathyroid secretory protein 1 ; Chromogranin A precursor ; ChromograninA ; CMGA_HUMAN ; ER-37 ; Pancreastatin ; Parastatin ; Parathyroid secretory protein 1 ; Pituitary secretory protein I ; Secretory protein I ; SP I ; SP-I ; SP1 ; SPI ; vasostatin 2 ; Vasostatin ; Vasostatin I ; Vasostatin II ; vasostatin-2
Observed Band	80kD
Calculated Molecular Weight	51kD
Cell Pathway	Secreted
Tissue Specificity	Pancreas/ stomach
Function	Pancreastatin strongly inhibits glucose induced insulin release from the pancreas.,miscellaneous: Binds calcium with a low-affinity.,PTM:Sulfated on

杭州臻优品生物科技有限公司

热销产品:

蛋白、一抗、抗体对、ELISA试剂盒、生化试剂盒
CCK8试剂盒、QPCR检测试剂盒

检测服务:

ELISA检测及定制服务 | 生化检测 | PCR、QPCR检测 | WB检测
ICO-IP检测 | 切片 | 染色 | 免疫组化 | 免疫荧光 | 透射电镜全套
| 宏基因组、转录组、基因组、蛋白组、代谢组测序



关注官网



关注客服



tyrosine residues and/or contains sulfated glycans.,similarity:Belongs to the chromogranin/secretogranin protein family.,subcellular location:Neuroendocrine and endocrine secretory granules.,

Background

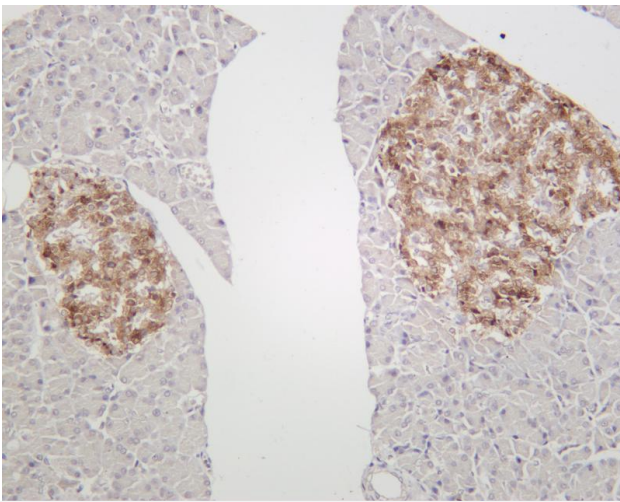
The protein encoded by this gene is a member of the chromogranin/secretogranin family of neuroendocrine secretory proteins. It is found in secretory vesicles of neurons and endocrine cells. This gene product is a precursor to three biologically active peptides; vasostatin, pancreastatin, and parastatin. These peptides act as autocrine or paracrine negative modulators of the neuroendocrine system. Two other peptides, catestatin and chromofungin, have antimicrobial activity and antifungal activity, respectively. Two transcript variants encoding different isoforms have been found for this gene. [provided by RefSeq, Sep 2014],

matters needing attention

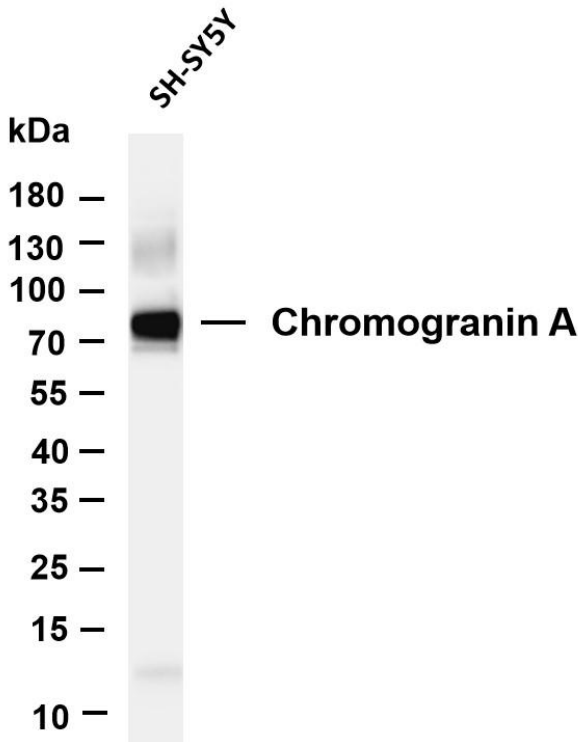
Avoid repeated freezing and thawing!

Usage suggestions

This product can be used in immunological reaction related experiments. For more information, please consult technical personnel.

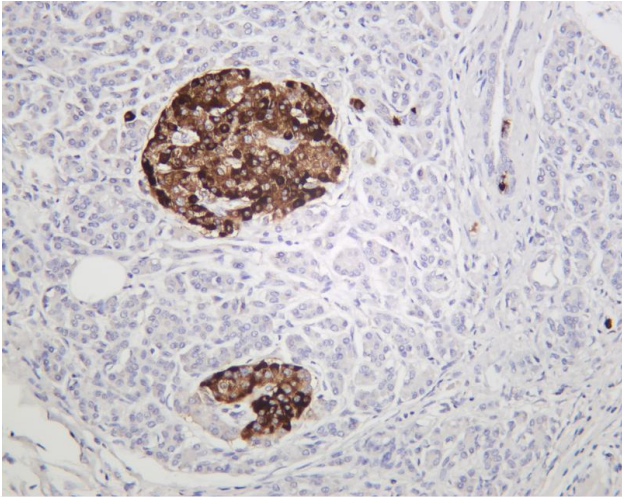


Rat pancreas was stained with anti-Chromogranin A rabbit antibody

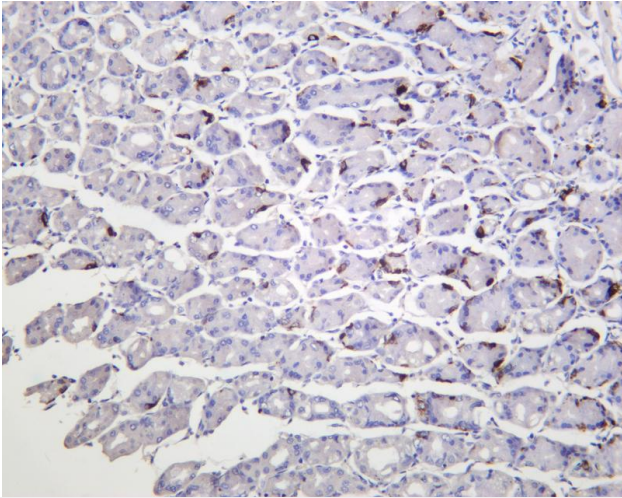


Various whole cell lysates were separated by 4-20% SDS-PAGE, and the membrane was blotted with anti-Chromogranin A antibody. The HRP-conjugated Goat anti-Rabbit IgG(H + L) antibody was used to detect the antibody. Lane 1: SH-SY5Y Predicted band size: 51kDa Observed band size: 80kDa

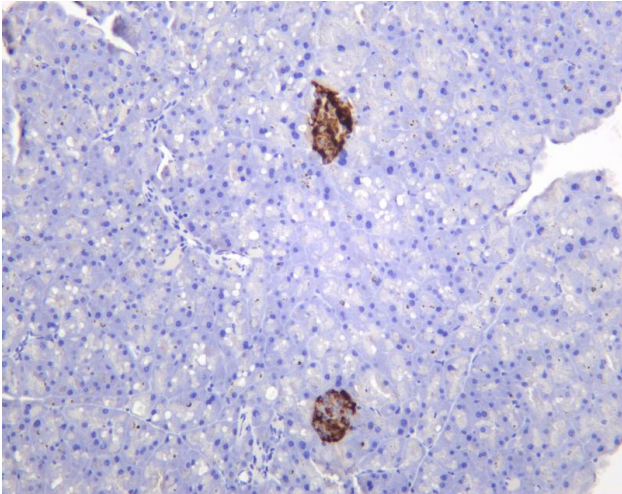




Human pancreas was stained with anti-Chromogranin A rabbit antibody



Human stomach was stained with anti-Chromogranin A rabbit antibody



Mouse pancreas was stained with anti-Chromogranin A rabbit antibody

杭州臻优品生物科技有限公司

热销产品:

蛋白、一抗、抗体对、ELISA试剂盒、生化试剂盒
CCK8试剂盒、QPCR检测试剂盒

检测服务:

ELISA检测及定制服务 | 生化检测 | PCR、QPCR检测 | WB检测
ICO-IP检测 | 切片 | 染色 | 免疫组化 | 免疫荧光 | 透射电镜全套
| 宏基因组、转录组、基因组、蛋白组、代谢组测序



关注官网



关注客服