



Rab7 Rabbit mAb

Catalog No	YP-rAb-17959
Isotype	IgG
Reactivity	Human,Mouse,Rat
Applications	WB,IHC,IF,ELISA
Gene Name	RAB7A RAB7
Protein Name	RAB7A
Purification Process	Protein A
Specificity	Endogenous
Formulation	PBS, 50% glycerol, 0.05% Proclin 300, 0.05%BSA
Source	Monoclonal, Rabbit,IgG
Dilution	IHC 1:200-1:1000; WB 1:1000-1:5000; IF 1:200-1:1000; ELISA 1:5000-1:20000; Note: For IHC, we suggest antigen retrieval with TE buffer pH 9.0
Concentration	0.5 mg/ml
Purity	≥90%
Storage Stability	-15° C to -25° C/1 year(Do not lower than -25° C)
Synonyms	
Observed Band	24kD
Calculated Molecular Weight	24kD
Cell Pathway	Cytoplasm
Tissue Specificity	Widely expressed; high expression found in skeletal muscle.
Function	Disease:Defects in RAB7A are the cause of Charcot-Marie-Tooth disease type 2B (CMT2B) [MIM:600882]; also known as hereditary motor and sensory neuropathy II (HMSN2). CMT2B is a form of Charcot-Marie-Tooth disease, the most common inherited disorder of the peripheral nervous system. Charcot-Marie-Tooth disease is classified in two main groups on the basis of electrophysiologic properties and histopathology: primary peripheral demyelinating neuropathy or CMT1, and primary peripheral axonal neuropathy or CMT2. Neuropathies of the CMT2 group are characterized by signs of axonal regeneration in the absence of obvious myelin alterations, normal or slightly reduced nerve conduction velocities, and progressive distal muscle weakness and atrophy. CMT2B is clinically characterized by marked distal muscle weakness and a high frequency of foot ulcers, infections and amputations of the toes. CMT2B inheritance is autosomal dominant.,Function:Involved in late endocytic transport. Contributes to the





maturation of phagosomes (acidification).,sequence Caution:Wrong choice of frame.,similarity:Belongs to the small GTPase superfamily. Rab family.,subcellular location:Identified by mass spectrometry in melanosome fractions from stage I to stage IV.,subunit:Interacts with RILP.,tissue specificity:Widely expressed; high expression found in skeletal muscle.,

Background

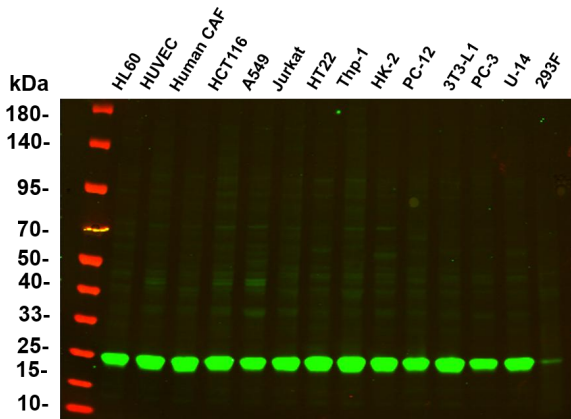
RAB family members are small, RAS-related GTP-binding proteins that are important regulators of vesicular transport. Each RAB protein targets multiple proteins that act in exocytic / endocytic pathways. This gene encodes a RAB family member that regulates vesicle traffic in the late endosomes and also from late endosomes to lysosomes. This encoded protein is also involved in the cellular vacuolation of the VacA cytotoxin of Helicobacter pylori. Mutations at highly conserved amino acid residues in this gene have caused some forms of Charcot-Marie-Tooth (CMT) type 2 neuropathies. [provided by RefSeq, Jul 2008],

matters needing attention

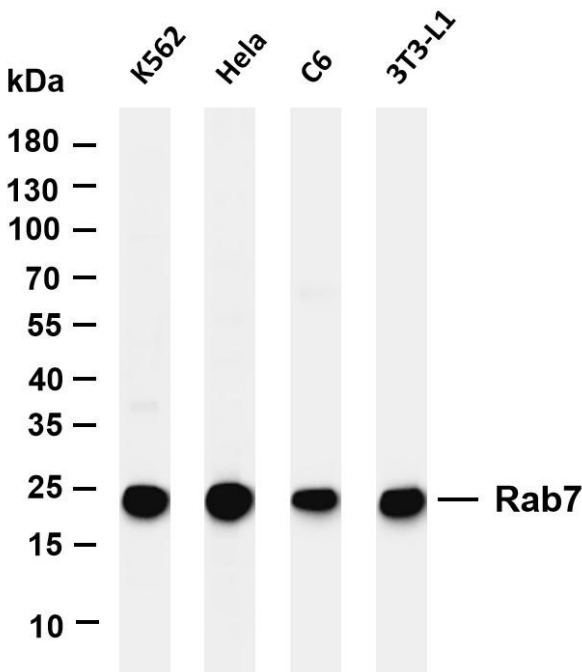
Avoid repeated freezing and thawing!

Usage suggestions

This product can be used in immunological reaction related experiments. For more information, please consult technical personnel.

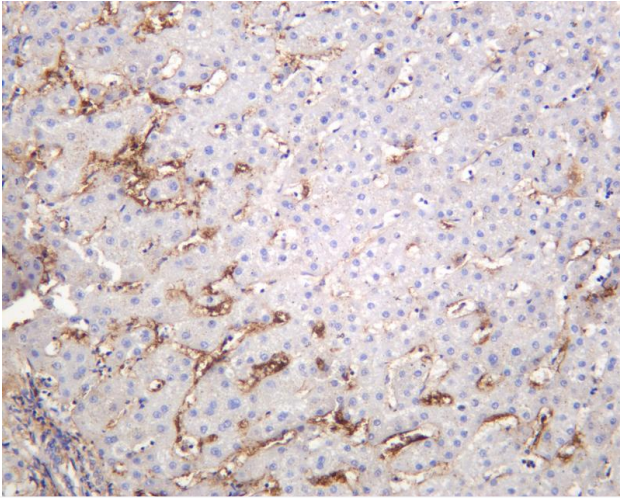


Various whole cell lysates were separated by 4-20% SDS-PAGE, and the primary antibody was used at 4°C, over night with a 1:2500 dilution. The Dylight 800-conjugated Goat anti-Rabbit antibody

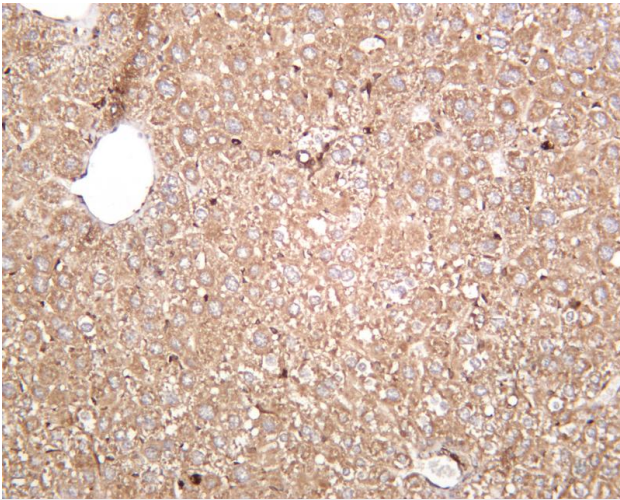


Various whole cell lysates were separated by 4-20% SDS-PAGE, and the membrane was blotted with anti-Rab7 antibody. The HRP-conjugated Goat anti-Rabbit IgG(H + L) antibody was used to detect the antibody. Lane 1: K562 Lane 2: HeLa Lane 3: C6 Lane 4: 3T3-L1 Predicted band size: 24kDa Observed band size: 24kDa

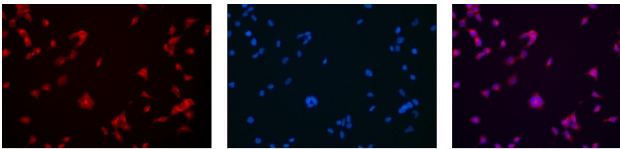




Human liver was stained with anti-Rab7 rabbit antibody



Mouse liver was stained with anti-Rab7 rabbit antibody



Immunofluorescence analysis of HEK293. Picture A: Rab7 antibody (red). Picture B: DAPI (blue). Picture C: Merge of A+B

A

B

C

