



Claudin 1 Rabbit mAb

Catalog No	YP-rAb-17957
Isotype	IgG
Reactivity	Human,Mouse,Rat
Applications	WB,IHC,IF,IP,ELISA
Gene Name	CLDN1
Protein Name	Claudin-1
Purification Process	Protein A
Specificity	Endogenous
Formulation	PBS, 50% glycerol, 0.05% Proclin 300, 0.05%BSA
Source	Monoclonal, Rabbit,IgG
Dilution	IHC 1:200-1:1000; WB 1:1000-1:5000; IF 1:200-1:1000; ELISA 1:5000-1:20000; IP 1:50-1:200, Note: For IHC, we suggest antigen retrieval with TE buffer pH 9.0
Concentration	0.5 mg/ml
Purity	≥90%
Storage Stability	-15° C to -25° C/1 year(Do not lower than -25° C)
Synonyms	CLDN1 ; CLD1 ; SEMP1 ; Claudin-1 ; Senescence-associated epithelial membrane protein
Observed Band	19kD
Calculated Molecular Weight	22kD
Cell Pathway	Membrane
Tissue Specificity	Strongly expressed in liver and kidney. Expressed in heart, brain, spleen, lung and testis.
Function	Disease:Defects in CLDN1 are the cause of ichthyosis-sclerosing cholangitis neonatal syndrome (NISCH) [MIM:607626]; also called ichthyosis with leukocyte vacuoles alopecia and sclerosing cholangitis (ILVASC). NISCH is a rare autosomal recessive complex ichthyosis syndrome characterized by scalp hypotrichosis, scarring alopecia, vulgar type ichthyosis, and sclerosing cholangitis.,Function:Plays a major role in tight junction-specific obliteration of the intercellular space, through calcium-independent cell-adhesion activity (By similarity). Acts as a co-receptor for HCV entry into hepatic cells.,similarity:Belongs to the claudin family.,subunit:Can form homo- and heteropolymers with other CLDN. Homopolymers interact with CLDN3, but not CLDN2, homopolymers. Directly interacts with TJP1/ZO-1, TJP2/ZO-2 and TJP3/ZO-3. Interacts with MPDZ and INADL (By similarity). May interact with HCV





E1 and E2 proteins.,tissue specificity:Strongly expressed in liver and kidney.
Expressed in heart, brain, spleen, lung and testis.,

Background

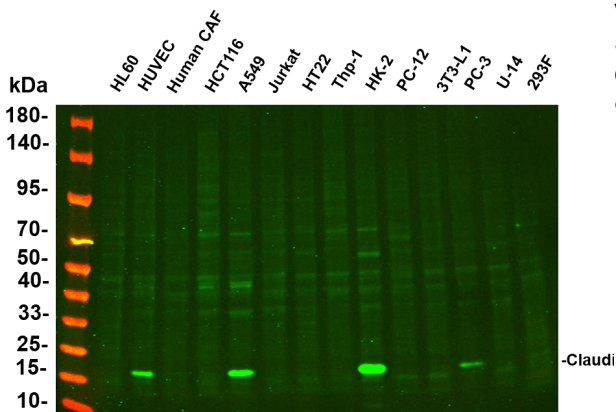
Tight junctions represent one mode of cell-to-cell adhesion in epithelial or endothelial cell sheets, forming continuous seals around cells and serving as a physical barrier to prevent solutes and water from passing freely through the paracellular space. These junctions are comprised of sets of continuous networking strands in the outwardly facing cytoplasmic leaflet, with complementary grooves in the inwardly facing extracytoplasmic leaflet. The protein encoded by this gene, a member of the claudin family, is an integral membrane protein and a component of tight junction strands. Loss of function mutations result in neonatal ichthyosis-sclerosing cholangitis syndrome. [provided by RefSeq, Jul 2008],

matters needing attention

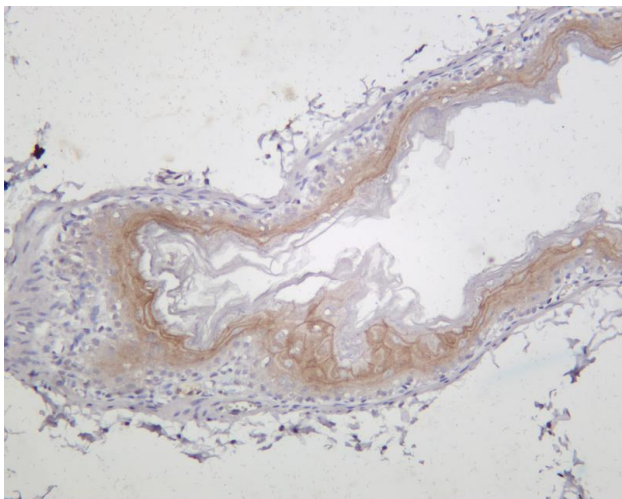
Avoid repeated freezing and thawing!

Usage suggestions

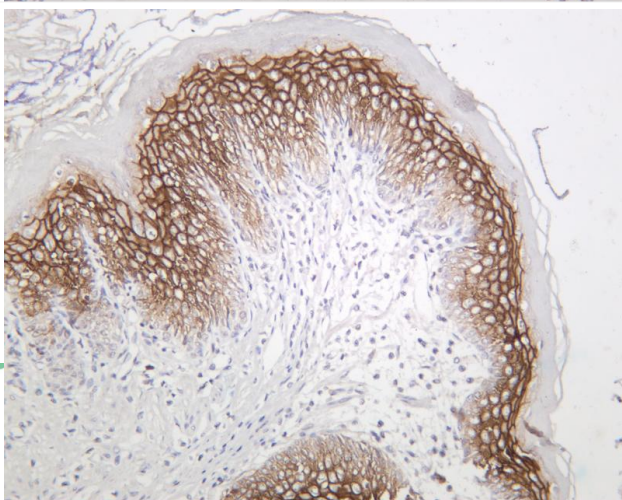
This product can be used in immunological reaction related experiments. For more information, please consult technical personnel.



Various whole cell lysates were separated by 4-20% SDS-PAGE, and the primary antibody was used at 4°C, over night with a 1:2500 dilution . The Dylight 800-conjugated Goat anti-Rabbit antibody

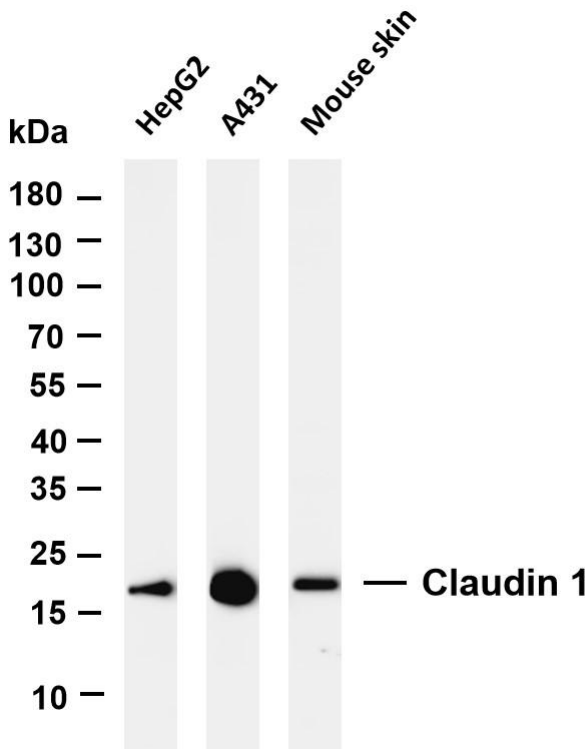


Mouse stomach was stained with anti-Claudin 1 rabbit antibody

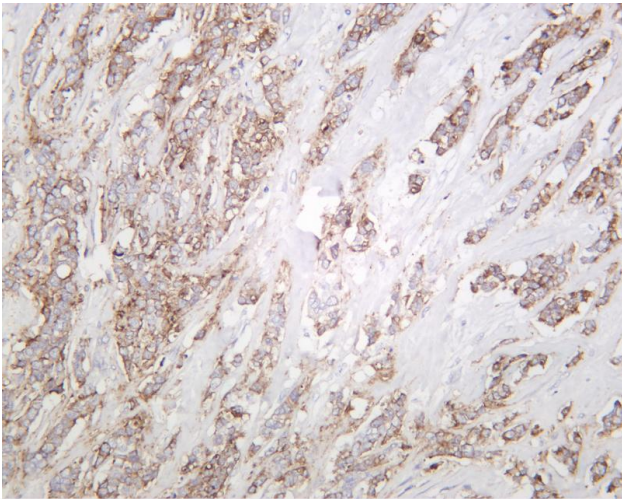


Rat stomach was stained with anti-Claudin 1 rabbit antibody





Various whole cell lysates were separated by 4-20% SDS-PAGE, and the membrane was blotted with anti-Claudin 1 antibody. The HRP-conjugated Goat anti-Rabbit IgG(H + L) antibody was used to detect the antibody. Lane 1: HepG2 Lane 2: A431 Lane 3: Mouse skin Predicted band size: 22kDa Observed band size: 19kDa



Human breast was stained with anti-Claudin 1 rabbit antibody

杭州臻优品生物科技有限公司

热销产品:

蛋白、一抗、抗体对、ELISA试剂盒、生化试剂盒
CCK8试剂盒、QPCR检测试剂盒

检测服务:

ELISA检测及定制服务 | 生化检测 | PCR、QPCR检测 | WB检测
ICO-IP检测 | 切片 | 染色 | 免疫组化 | 免疫荧光 | 透射电镜全套
| 宏基因组、转录组、基因组、蛋白组、代谢组测序



关注官网



关注客服