



# NDUFS3 Rabbit mAb

<b>Catalog No</b>	YP-rAb-17951
<b>Isotype</b>	IgG
<b>Reactivity</b>	Human,Mouse,Rat
<b>Applications</b>	WB,IHC,IF,ELISA
<b>Gene Name</b>	NDUFS3
<b>Protein Name</b>	NADH dehydrogenase [ubiquinone] iron-sulfur protein 3 mitochondrial
<b>Purification Process</b>	Protein A
<b>Specificity</b>	Endogenous
<b>Formulation</b>	PBS, 50% glycerol, 0.05% Proclin 300, 0.05%BSA
<b>Source</b>	Monoclonal, Rabbit,IgG
<b>Dilution</b>	IHC 1:200-1:1000; WB 1:500-1:2000; IF 1:200-1:1000; ELISA 1:5000-1:20000; Note: For IHC, we suggest antigen retrieval with TE buffer pH 9.0
<b>Concentration</b>	0.5 mg/ml
<b>Purity</b>	≥90%
<b>Storage Stability</b>	-15° C to -25° C/1 year(Do not lower than -25° C)
<b>Synonyms</b>	NDUFS3 ; NADH dehydrogenase [ubiquinone] iron-sulfur protein 3 ; mitochondrial ; Complex I-30kD ; CI-30kD ; NADH-ubiquinone oxidoreductase 30 kDa subunit
<b>Observed Band</b>	30kD
<b>Calculated Molecular Weight</b>	30kD
<b>Cell Pathway</b>	Mitochondrion inner membrane
<b>Tissue Specificity</b>	Brain,Cajal-Retzius cell,Pituitary,Skin,Stomach mucosa,Uter
<b>Function</b>	Catalytic activity:NADH + acceptor = NAD(+) + reduced acceptor.,Catalytic activity:NADH + ubiquinone = NAD(+) + ubiquinol.,Function:Core subunit of the mitochondrial membrane respiratory chain NADH dehydrogenase (Complex I) that is believed to belong to the minimal assembly required for catalysis. Complex I functions in the transfer of electrons from NADH to the respiratory chain. The immediate electron acceptor for the enzyme is believed to be ubiquinone.,similarity:Belongs to the complex I 30 kDa subunit family.,subunit:Mammalian complex I is composed of 45 different subunits.,
<b>Background</b>	This gene encodes one of the iron-sulfur protein (IP) components of mitochondrial NADH:ubiquinone oxidoreductase (complex I). Mutations in this gene are associated with Leigh syndrome resulting from mitochondrial complex I deficiency.[provided by RefSeq, Apr 2009],

## 杭州臻优品生物科技有限公司

### 热销产品:

蛋白、一抗、抗体对、ELISA试剂盒、生化试剂盒  
CCK8试剂盒、QPCR检测试剂盒

### 检测服务:

ELISA检测及定制服务 | 生化检测 | PCR、QPCR检测 | WB检测  
| CO-IP检测 | 切片 | 染色 | 免疫组化 | 免疫荧光 | 透射电镜全套  
| 宏基因组、转录组、基因组、蛋白组、代谢组测序



关注官网



关注客服

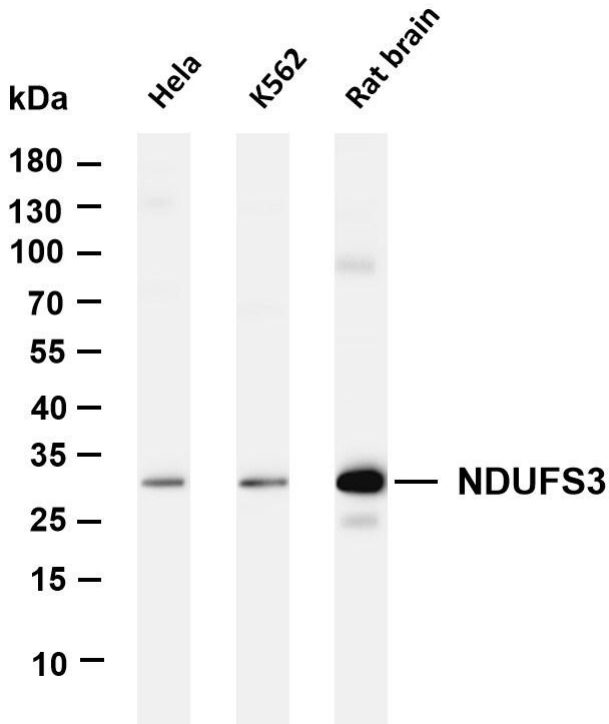


**matters needing attention**

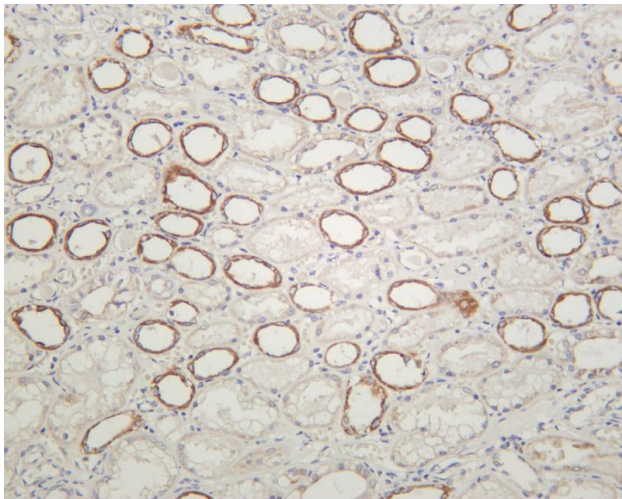
Avoid repeated freezing and thawing!

**Usage suggestions**

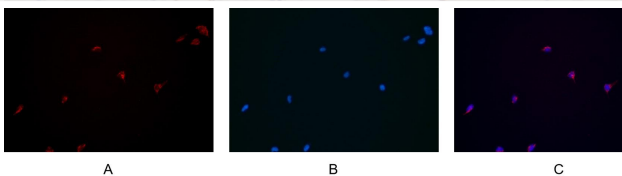
This product can be used in immunological reaction related experiments. For more information, please consult technical personnel.



Various whole cell lysates were separated by 4-20% SDS-PAGE, and the membrane was blotted with anti-NDUFS3 antibody. The HRP-conjugated Goat anti-Rabbit IgG(H + L) antibody was used to detect the antibody. Lane 1: HeLa Lane 2: K562 Lane 3: Rat brain  
Predicted band size: 30kDa Observed band size: 30kDa



Human kidney was stained with anti-NDUFS3 rabbit antibody



Immunofluorescence analysis of HEK293. Picture A: NDUFS3 antibody (red). Picture B: DAPI (blue). Picture C: Merge of A+B

**杭州臻优品生物科技有限公司**

**热销产品:**

蛋白、一抗、抗体对、ELISA试剂盒、生化试剂盒  
CCK8试剂盒、QPCR检测试剂盒

**检测服务:**

ELISA检测及定制服务 | 生化检测 | PCR、QPCR检测 | WB检测  
ICO-IP检测 | 切片 | 染色 | 免疫组化 | 免疫荧光 | 透射电镜全套  
| 宏基因组、转录组、基因组、蛋白组、代谢组测序



关注官网



关注客服