



GRP78/BiP Rabbit mAb

| | |
|------------------------------------|---|
| Catalog No | YP-rAb-17950 |
| Isotype | IgG |
| Reactivity | Human,Mouse,Rat,Fish |
| Applications | WB,IHC,IF,ELISA |
| Gene Name | HSPA5 GRP78 |
| Protein Name | GRP78 BiP |
| Purification Process | Protein A |
| Specificity | Endogenous |
| Formulation | PBS, 50% glycerol, 0.05% Proclin 300, 0.05%BSA |
| Source | Monoclonal, Rabbit,IgG |
| Dilution | IHC 1:200-1:1000; WB 1:1000-1:5000; IF 1:200-1:1000; ELISA 1:5000-1:20000; Note: For IHC, we suggest antigen retrieval with TE buffer pH 9.0 |
| Concentration | 0.5 mg/ml |
| Purity | ≥90% |
| Storage Stability | -15° C to -25° C/1 year(Do not lower than -25° C) |
| Synonyms | 78 kDa glucose-regulated protein ; GRP-78 ; Endoplasmic reticulum luminal Ca ; 2+ ; -binding protein grp78 ; Heat shock 70 kDa protein 5 ; Immunoglobulin heavy chain-binding protein ; BiP ; |
| Observed Band | 78kD |
| Calculated Molecular Weight | 72kD |
| Cell Pathway | Cytoplasm |
| Tissue Specificity | Articular cartilage,Brain,Cajal-Retzius cell,Cervix carcino |
| Function | Disease:Autoantigen in rheumatoid arthritis [MIM:180300].,Function:Probably plays a role in facilitating the assembly of multimeric protein complexes inside the ER.,similarity:Belongs to the heat shock protein 70 family.,subcellular location:Identified by mass spectrometry in melanosome fractions from stage I to stage IV.,subunit:Interacts with DNAJC1 (via J domain) (By similarity). Component of an EIF2 complex at least composed of CUGBP1, CALR, CALR3, EIF2S1, EIF2S2, HSP90B1 and HSPA5. Part a large chaperone multiprotein complex comprising CABP1, DNAJB11, HSP90B1, HSPA5, HYOU, PDIA2, PDIA4, PPIB, SDF2L1, UGT1A1 and very small amounts of ERP29, but not, or at very low levels, CALR nor CANX. Interacts with TMEM132A., |





Background

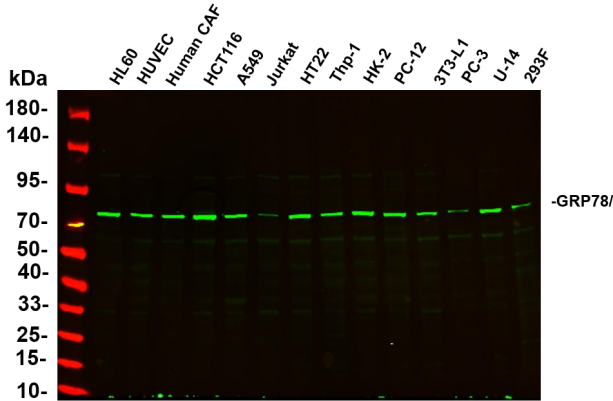
The protein encoded by this gene is a member of the heat shock protein 70 (HSP70) family. It is localized in the lumen of the endoplasmic reticulum (ER), and is involved in the folding and assembly of proteins in the ER. As this protein interacts with many ER proteins, it may play a key role in monitoring protein transport through the cell.[provided by RefSeq, Sep 2010],

matters needing attention

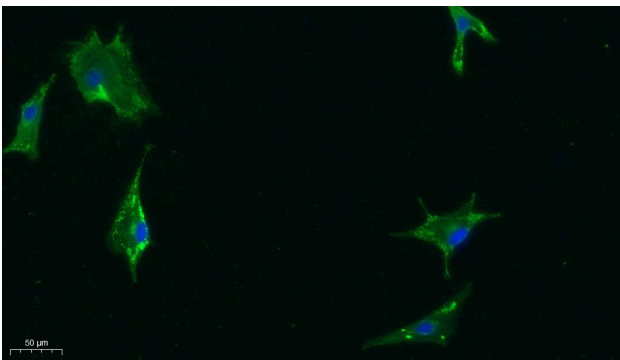
Avoid repeated freezing and thawing!

Usage suggestions

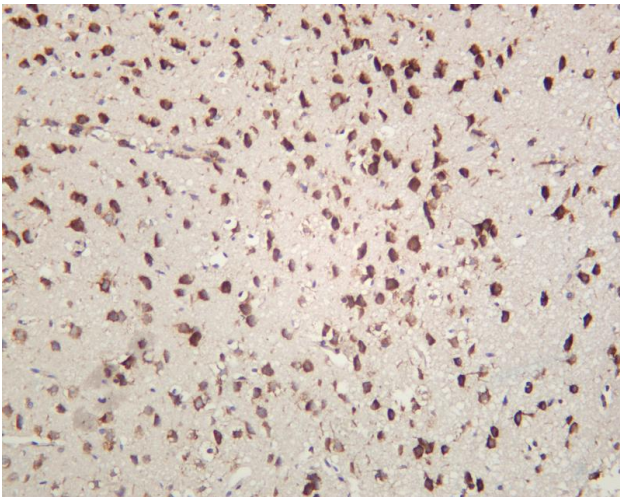
This product can be used in immunological reaction related experiments. For more information, please consult technical personnel.



Various whole cell lysates were separated by 4-20% SDS-PAGE, and the primary antibody was used at 4°C, over night with a 1:2500 dilution. The Dylight 800-conjugated Goat anti-Rabbit antibody

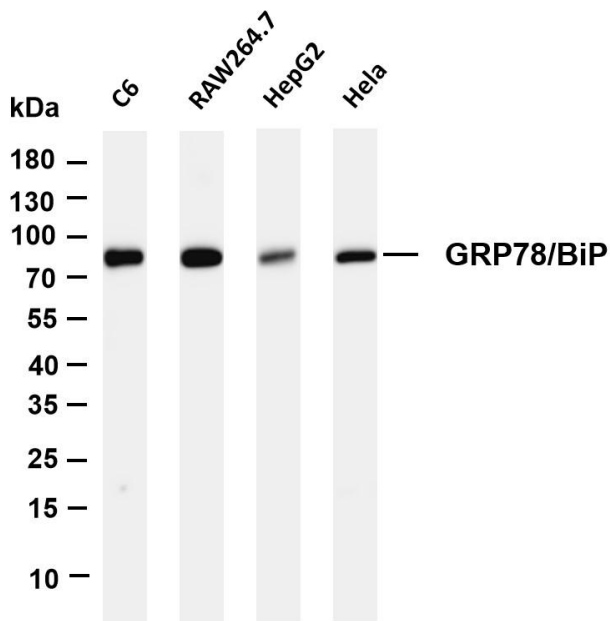


Immunofluorescence analysis of A549. 1,primary Antibody was diluted at 1:200(4°C overnight). 2, Goat Anti Rabbit IgG (H&L) - Alexa Fluor 488 Secondary antibody was diluted at 1:1000(room temperature, 50min).3, DAPI(blue) 10min.

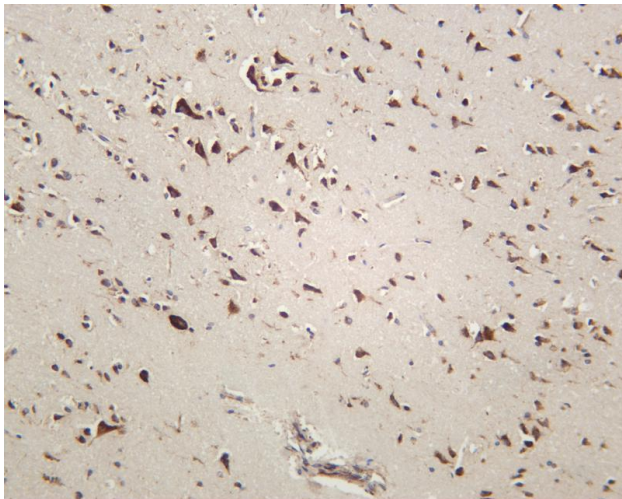


Rat brain was stained with anti-GRP78/BiP rabbit antibody





Various whole cell lysates were separated by 4-20% SDS-PAGE, and the membrane was blotted with anti-GRP78/BiP antibody. The HRP-conjugated Goat anti-Rabbit IgG(H + L) antibody was used to detect the antibody. Lane 1: C6 Lane 2: RAW264.7 Lane 3: HepG2 Lane 4: HeLa Predicted band size: 72kDa Observed band size: 78kDa



Human brain was stained with anti-GRP78/BiP rabbit antibody

