



# Cytokeratin 8 Rabbit mAb

<b>Catalog No</b>	YP-rAb-17943
<b>Isotype</b>	IgG
<b>Reactivity</b>	Human,Mouse,Rat
<b>Applications</b>	WB,IHC,IF,IP,ELISA
<b>Gene Name</b>	KRT8 CYK8
<b>Protein Name</b>	CARD2;CK 8;CK-8;CK8;CYK8;CYKER;Cytokeratin endo A;Cytokeratin-8;DreK8;EndoA;K2C8;K2C8_HUMAN;K8;Keratin 8;Keratin type II cytoskeletal 8;Keratin, type II cytoskeletal 8;Keratin-8;KO;Krt 2.8;KRT8;MGC118110;MGC174782;MGC53564;MGC85764;sb:cb186;Type-II keratin Kb8
<b>Purification Process</b>	Protein A
<b>Specificity</b>	Endogenous
<b>Formulation</b>	PBS, 50% glycerol, 0.05% Proclin 300, 0.05%BSA
<b>Source</b>	Monoclonal, Rabbit,IgG
<b>Dilution</b>	IHC 1:200-1:1000; WB 1:1000-1:5000; IF 1:200-1:1000; ELISA 1:5000-1:20000; IP 1:50-1:200, Note: For IHC, we suggest antigen retrieval with TE buffer pH 9.0
<b>Concentration</b>	0.5 mg/ml
<b>Purity</b>	≥90%
<b>Storage Stability</b>	-15° C to -25° C/1 year(Do not lower than -25° C)
<b>Synonyms</b>	CARD2 ; CK 8 ; CK-8 ; CK8 ; CYK8 ; CYKER ; Cytokeratin endo A ; Cytokeratin-8 ; DreK8 ; EndoA ; K2C8 ; K2C8_HUMAN ; K8 ; Keratin 8 ; Keratin type II cytoskeletal 8 ; Keratin, type II cytoskeletal 8 ; Keratin-8 ; KO ; Krt 2.8 ; KRT8 ; MGC118110 ; MGC174782 ; MGC53564 ; MGC85764 ; sb:cb186 ; Type-II keratin Kb8
<b>Observed Band</b>	54kD
<b>Calculated Molecular Weight</b>	54kD
<b>Cell Pathway</b>	Cytoplasm . Nucleus, nucleoplasm . Nucleus matrix .
<b>Tissue Specificity</b>	Observed in muscle fibers accumulating in the costameres of myoplasm at the sarcolemma membrane in structures that contain dystrophin and spectrin. Expressed in gingival mucosa and hard palate of the oral cavity.
<b>Function</b>	Disease:Defects in KRT8 are a cause of cryptogenic cirrhosis [MIM:215600].,Function:Together with KRT19, helps to link the contractile apparatus to dystrophin at the costameres of striated muscle.,miscellaneous:There are two types of cytoskeletal and microfibrillar

杭州臻优品生物科技有限公司

热销产品:

蛋白、一抗、抗体对、ELISA试剂盒、生化试剂盒  
CCK8试剂盒、QPCR检测试剂盒

检测服务:

ELISA检测及定制服务 | 生化检测 | PCR、QPCR检测 | WB检测  
ICO-IP检测 | 切片 | 染色 | 免疫组化 | 免疫荧光 | 透射电镜全套  
| 宏基因组、转录组、基因组、蛋白组、代谢组测序



关注官网



关注客服



keratin: I (acidic; 40-55 kDa) and II (neutral to basic; 56-70 kDa).,PTM:O-glycosylated at multiple sites; glycans consist of single N-acetylglucosamine residues.,PTM:Phosphorylation on serine residues is enhanced during EGF stimulation and mitosis. Ser-74 phosphorylation plays an important role in keratin filament reorganization.,similarity:Belongs to the intermediate filament family.,subunit:Heterotetramer of two type I and two type II keratins. keratin-8 associates with keratin-18. Associates with KRT20. Interacts with HCV core protein and PNN. When associated with KRT19, interacts with DMD. Interacts with TCHP.,tissue specificity:Observed in muscle fibers accumulating in the costameres of myoplasm at the sarcolemma membrane in structures that contain dystrophin and spectrin. Expressed in gingival mucosa and hard palate of the oral cavity.,

### Background

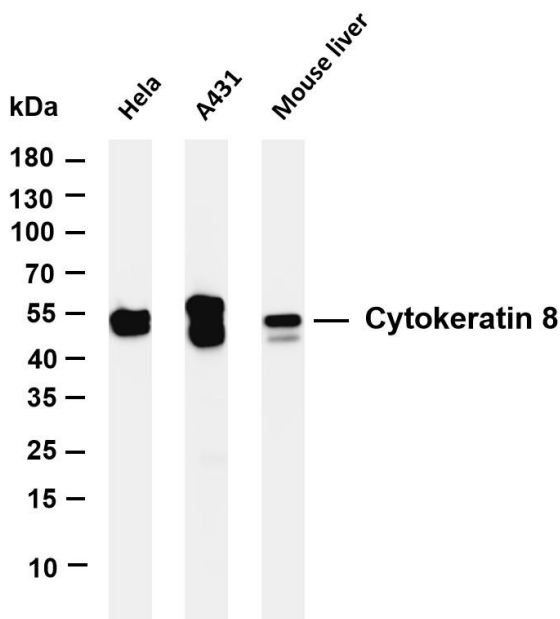
keratin 8(KRT8) Homo sapiens This gene is a member of the type II keratin family clustered on the long arm of chromosome 12. Type I and type II keratins heteropolymerize to form intermediate-sized filaments in the cytoplasm of epithelial cells. The product of this gene typically dimerizes with keratin 18 to form an intermediate filament in simple single-layered epithelial cells. This protein plays a role in maintaining cellular structural integrity and also functions in signal transduction and cellular differentiation. Mutations in this gene cause cryptogenic cirrhosis. Alternatively spliced transcript variants have been found for this gene. [provided by RefSeq, Jan 2012],

### matters needing attention

Avoid repeated freezing and thawing!

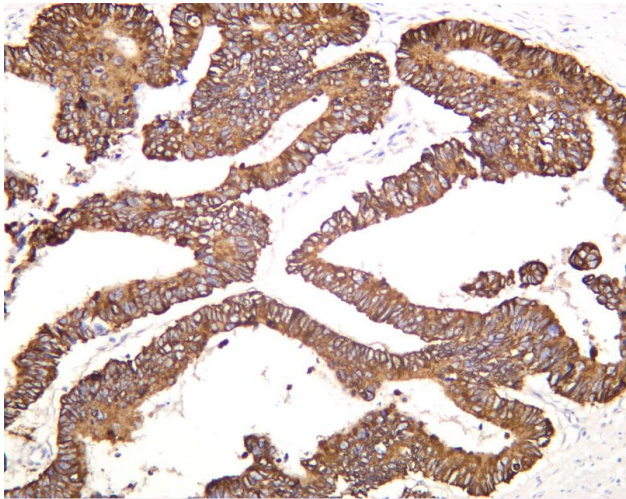
### Usage suggestions

This product can be used in immunological reaction related experiments. For more information, please consult technical personnel.

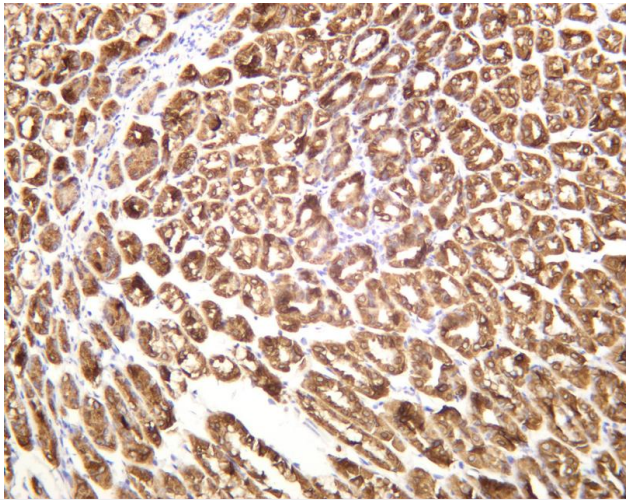


Various whole cell lysates were separated by 4-20% SDS-PAGE, and the membrane was blotted with anti-Cytokeratin 8 antibody. The HRP-conjugated Goat anti-Rabbit IgG(H + L) antibody was used to detect the antibody. Lane 1: HeLa Lane 2: A431 Lane 3: Mouse liver Predicted band size: 54kDa Observed band size: 54kDa

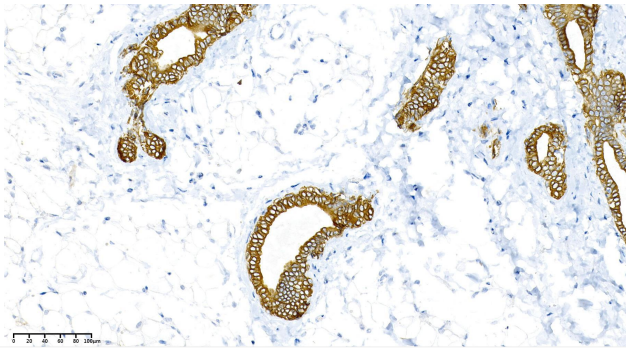




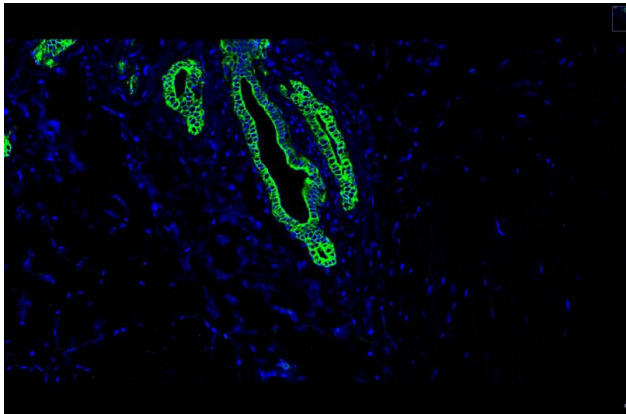
Human colon carcinoma was stained with anti-Cytokeratin 8 rabbit antibody



Mouse stomach was stained with anti-Cytokeratin 8 rabbit antibody



Mouse mammary gland was stained with anti-Cytokeratin 8 Rabbit antibody



Mouse mammary gland was stained with anti-Cytokeratin 8 Rabbit antibody

## 杭州臻优品生物科技有限公司

### 热销产品:

蛋白、一抗、抗体对、ELISA试剂盒、生化试剂盒  
CCK8试剂盒、QPCR检测试剂盒

### 检测服务:

ELISA检测及定制服务 | 生化检测 | PCR、QPCR检测 | WB检测  
ICO-IP检测 | 切片 | 染色 | 免疫组化 | 免疫荧光 | 透射电镜全套  
| 宏基因组、转录组、基因组、蛋白组、代谢组测序



关注官网



关注客服