



# SOD2 Rabbit mAb

<b>Catalog No</b>	YP-rAb-17940
<b>Isotype</b>	IgG
<b>Reactivity</b>	Human,Mouse,Rat
<b>Applications</b>	WB,IHC,IF,ELISA
<b>Gene Name</b>	SOD2
<b>Protein Name</b>	Superoxide dismutase [Mn] mitochondrial
<b>Purification Process</b>	Protein A
<b>Specificity</b>	Endogenous
<b>Formulation</b>	PBS, 50% glycerol, 0.05% Proclin 300, 0.05%BSA
<b>Source</b>	Monoclonal, Rabbit,IgG
<b>Dilution</b>	IHC 1:200-1:1000; WB 1:1000-1:5000; IF 1:200-1:1000; ELISA 1:5000-1:20000; Note: For IHC, we suggest antigen retrieval with TE buffer pH 9.0
<b>Concentration</b>	0.5 mg/ml
<b>Purity</b>	≥90%
<b>Storage Stability</b>	-15° C to -25° C/1 year(Do not lower than -25° C)
<b>Synonyms</b>	SOD2 ; Superoxide dismutase [Mn], mitochondrial
<b>Observed Band</b>	22kD
<b>Calculated Molecular Weight</b>	25kD
<b>Cell Pathway</b>	Mitochondrion matrix
<b>Tissue Specificity</b>	Brain,Colon,Heart,Liver,Lung,Mammary carcinoma,Tongue,
<b>Function</b>	Catalytic activity:2 superoxide + 2 H(+) = O(2) + H(2)O(2)..cofactor:Binds 1 manganese ion per subunit.,Disease:Genetic variation in SOD2 is associated with susceptibility to diabetic nephropathy [MIM:612634]; also called susceptibility to microvascular complications of diabetes type 6 (MVCD6). Diabetic nephropathy is a kidney disease and resultant kidney function impairment due to the long standing effects of diabetes on the microvasculature (glomerulus) of the kidney. Features include increased urine protein and declining kidney function.,Function:Destroys radicals which are normally produced within the cells and which are toxic to biological systems.,online information:Superoxide dismutase entry,online information:The Singapore human mutation and polymorphism database,PTM:Nitrated under oxidative stress. Nitration coupled with oxidation inhibits the catalytic activity.,similarity:Belongs to the iron/manganese superoxide dismutase family.,subunit:Homotetramer.,

## 杭州臻优品生物科技有限公司

### 热销产品:

蛋白、一抗、抗体对、ELISA试剂盒、生化试剂盒  
CCK8试剂盒、QPCR检测试剂盒

### 检测服务:

ELISA检测及定制服务 | 生化检测 | PCR、QPCR检测 | WB检测  
| CO-IP检测 | 切片 | 染色 | 免疫组化 | 免疫荧光 | 透射电镜全套  
| 宏基因组、转录组、基因组、蛋白组、代谢组测序



关注官网



关注客服



## Background

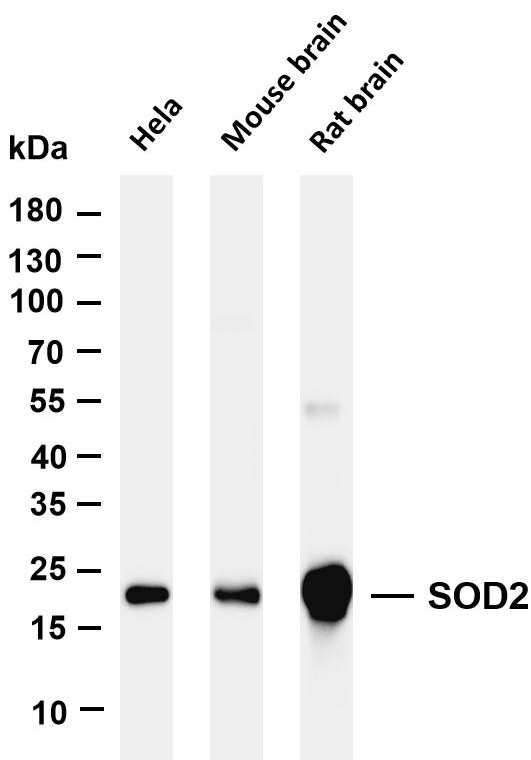
This gene is a member of the iron/manganese superoxide dismutase family. It encodes a mitochondrial protein that forms a homotetramer and binds one manganese ion per subunit. This protein binds to the superoxide byproducts of oxidative phosphorylation and converts them to hydrogen peroxide and diatomic oxygen. Mutations in this gene have been associated with idiopathic cardiomyopathy (IDC), premature aging, sporadic motor neuron disease, and cancer. Alternative splicing of this gene results in multiple transcript variants. A related pseudogene has been identified on chromosome 1. [provided by RefSeq, Apr 2016],

## matters needing attention

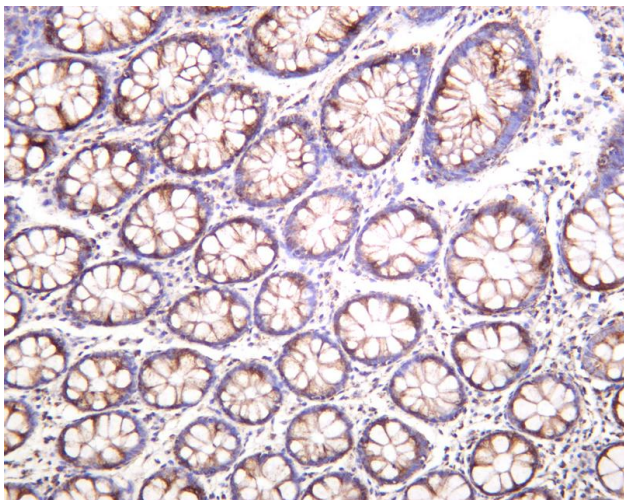
Avoid repeated freezing and thawing!

## Usage suggestions

This product can be used in immunological reaction related experiments. For more information, please consult technical personnel.



Various whole cell lysates were separated by 4-20% SDS-PAGE, and the membrane was blotted with anti-SOD2 antibody. The HRP-conjugated Goat anti-Rabbit IgG(H + L) antibody was used to detect the antibody. Lane 1: HeLa Lane 2: Mouse brain Lane 3: Rat brain Predicted band size: 25kDa Observed band size: 22kDa



Human colon was stained with anti-SOD2 rabbit antibody

## 杭州臻优品生物科技有限公司

### 热销产品:

蛋白、一抗、抗体对、ELISA试剂盒、生化试剂盒  
CCK8试剂盒、QPCR检测试剂盒

### 检测服务:

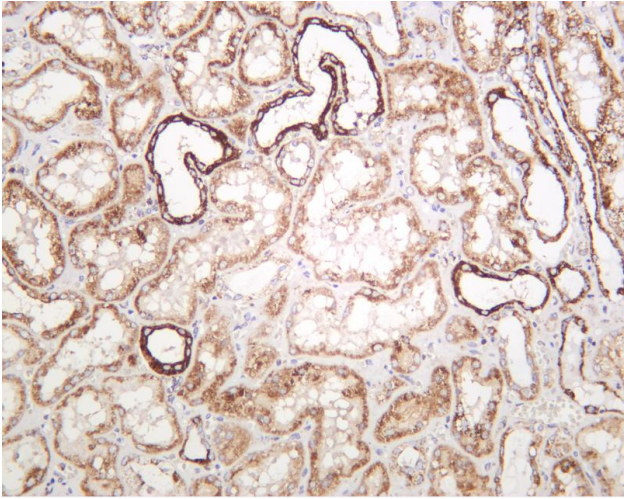
ELISA检测及定制服务 | 生化检测 | PCR、QPCR检测 | WB检测  
ICO-IP检测 | 切片 | 染色 | 免疫组化 | 免疫荧光 | 透射电镜全套  
| 宏基因组、转录组、基因组、蛋白组、代谢组测序



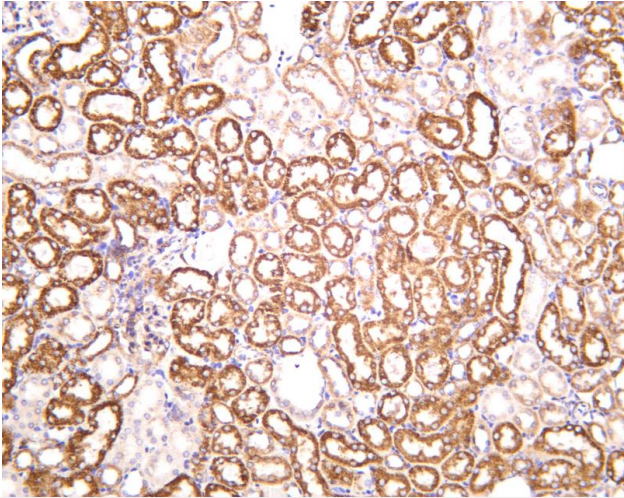
关注官网



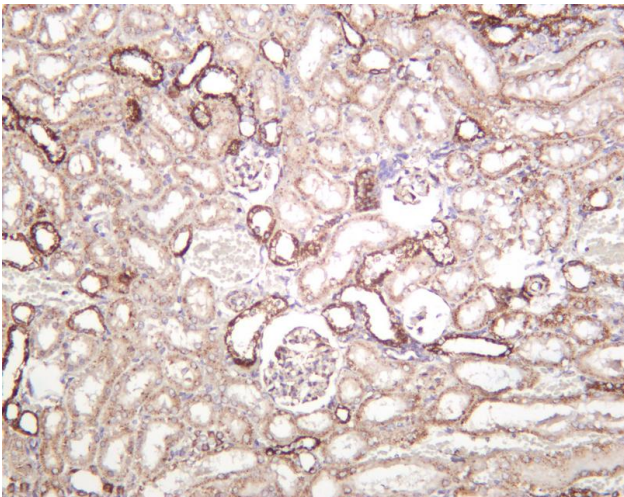
关注客服



Human kidney was stained with anti-SOD2 rabbit antibody



Mouse kidney was stained with anti-SOD2 rabbit antibody



Rat kidney was stained with anti-SOD2 rabbit antibody

