



# FTO Rabbit mAb

<b>Catalog No</b>	YP-rAb-17935
<b>Isotype</b>	IgG
<b>Reactivity</b>	Human,Mouse,Rat
<b>Applications</b>	WB,IHC,IF,ELISA
<b>Gene Name</b>	FTO
<b>Protein Name</b>	Alpha-ketoglutarate-dependent dioxygenase FTO
<b>Purification Process</b>	Protein A
<b>Specificity</b>	Endogenous
<b>Formulation</b>	PBS, 50% glycerol, 0.05% Proclin 300, 0.05%BSA
<b>Source</b>	Monoclonal, Rabbit,IgG
<b>Dilution</b>	IHC 1:3000-1:20000; WB 1:1000-1:5000; IF 1:200-1:1000; ELISA 1:5000-1:20000; Note: For IHC, we suggest antigen retrieval with TE buffer pH 9.0
<b>Concentration</b>	0.5 mg/ml
<b>Purity</b>	≥90%
<b>Storage Stability</b>	-15° C to -25° C/1 year(Do not lower than -25° C)
<b>Synonyms</b>	FTO ; KIAA1752 ; Alpha-ketoglutarate-dependent dioxygenase FTO ; Fat mass and obesity-associated protein
<b>Observed Band</b>	58kD
<b>Calculated Molecular Weight</b>	58kD
<b>Cell Pathway</b>	Cytoplasm, Nucleus
<b>Tissue Specificity</b>	Ubiquitously expressed, with relatively high expression in adrenal glands and brain; especially in hypothalamus and pituitary (PubMed:17434869, PubMed:17496892). Highly expressed in highly expressed in acute myeloid leukemias (AML) with t(11;11)(q23;23) with KMT2A/MLL1 rearrangements, t(15;17)(q21;q21)/PML-RARA, FLT3-ITD, and/or NPM1 mutations (PubMed:28017614).
<b>Function</b>	The precise function of this protein remains to be determined.,polymorphism:At least one intronic variation within the gene predisposes to childhood and adult obesity.,similarity:Belongs to the fto family.,tissue specificity:Ubiquitously expressed, with relatively high expression in adrenal glands and brain; especially in hypothalamus and pituitary.,





## Background

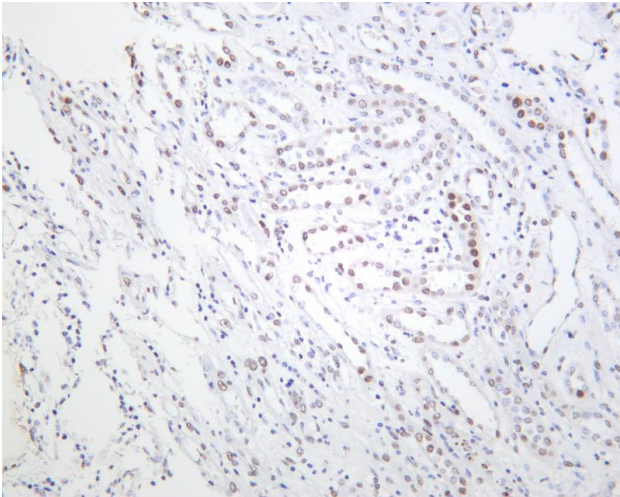
This gene is a nuclear protein of the AlkB related non-haem iron and 2-oxoglutarate-dependent oxygenase superfamily but the exact physiological function of this gene is not known. Other non-heme iron enzymes function to reverse alkylated DNA and RNA damage by oxidative demethylation. Studies in mice and humans indicate a role in nervous and cardiovascular systems and a strong association with body mass index, obesity risk, and type 2 diabetes. [provided by RefSeq, Jul 2011],

## matters needing attention

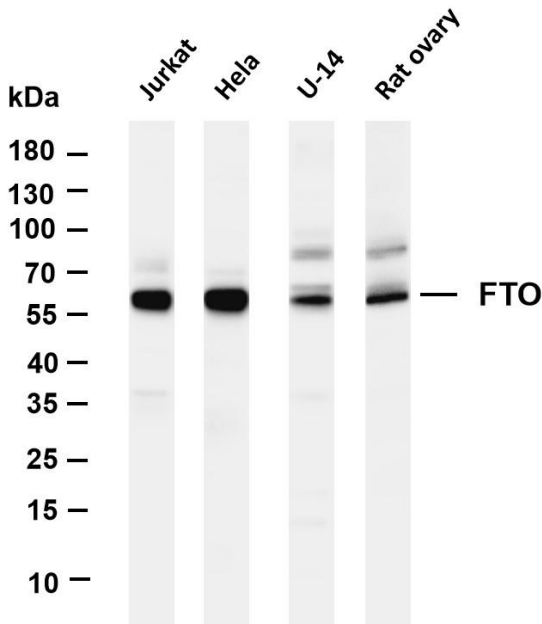
Avoid repeated freezing and thawing!

## Usage suggestions

This product can be used in immunological reaction related experiments. For more information, please consult technical personnel.



Human kidney was stained with anti-FTO rabbit antibody



Various whole cell lysates were separated by 4-20% SDS-PAGE, and the membrane was blotted with anti-FTO antibody. The HRP-conjugated Goat anti-Rabbit IgG(H + L) antibody was used to detect the antibody. Lane 1: Jurkat Lane 2: HeLa Lane 3: U-14 Lane 4: Rat ovary Predicted band size: 58kDa Observed band size: 58kDa

