



# HLA-DRA Rabbit mAb

<b>Catalog No</b>	YP-rAb-17927
<b>Isotype</b>	IgG
<b>Reactivity</b>	Human,Rat
<b>Applications</b>	WB,IHC,IF,ELISA
<b>Gene Name</b>	HLA-DRA HLA-DRA1
<b>Protein Name</b>	HLA class II histocompatibility antigen, DR alpha chain (MHC class II antigen DRA)
<b>Purification Process</b>	Protein A
<b>Specificity</b>	Endogenous
<b>Formulation</b>	PBS, 50% glycerol, 0.05% Proclin 300, 0.05%BSA
<b>Source</b>	Monoclonal, Rabbit,IgG
<b>Dilution</b>	IHC 1:1000-1:4000; WB 1:1000-1:5000; IF 1:200-1:1000; ELISA 1:5000-1:20000; Note: For IHC, we suggest antigen retrieval with TE buffer pH 9.0
<b>Concentration</b>	0.5 mg/ml
<b>Purity</b>	≥90%
<b>Storage Stability</b>	-15° C to -25° C/1 year(Do not lower than -25° C)
<b>Synonyms</b>	
<b>Observed Band</b>	37kD
<b>Calculated Molecular Weight</b>	29kD
<b>Cell Pathway</b>	Membrane
<b>Tissue Specificity</b>	Expressed in professional APCs: macrophages, dendritic cells and B cells (at protein level) (PubMed:31495665, PubMed:15322540, PubMed:23783831). Expressed in thymic epithelial cells (at protein level) (PubMed:23783831).
<b>Function</b>	Disease:Genetic variations in HLA-DRA are associated with susceptibility to hepatitis B virus infection (HBV infection) [MIM:610424]. Approximately one third of all cases of cirrhosis and half of all cases of hepatocellular carcinoma can be attributed to chronic HBV infection. HBV infection may result in subclinical or asymptomatic infection, acute self-limited hepatitis, or fulminant hepatitis requiring liver transplantation.,polymorphism:The following alleles of DRA are known: DRA*0101 and DRA*0102. The sequence shown is that of DRA*0101.,similarity:Belongs to the MHC class II family.,similarity:Contains 1 Ig-like C1-type (immunoglobulin-like) domain.,subunit:Heterodimer of an alpha chain and a beta chain.,





## Background

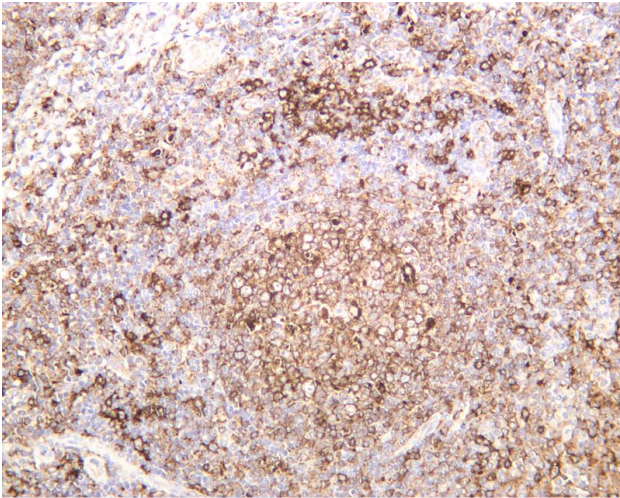
HLA-DRA is one of the HLA class II alpha chain paralogues. This class II molecule is a heterodimer consisting of an alpha and a beta chain, both anchored in the membrane. It plays a central role in the immune system by presenting peptides derived from extracellular proteins. Class II molecules are expressed in antigen presenting cells (APC: B lymphocytes, dendritic cells, macrophages). The alpha chain is approximately 33-35 kDa and its gene contains 5 exons. Exon 1 encodes the leader peptide, exons 2 and 3 encode the two extracellular domains, and exon 4 encodes the transmembrane domain and the cytoplasmic tail. DRA does not have polymorphisms in the peptide binding part and acts as the sole alpha chain for DRB1, DRB3, DRB4 and DRB5. [provided by RefSeq, Jul 2008],

## matters needing attention

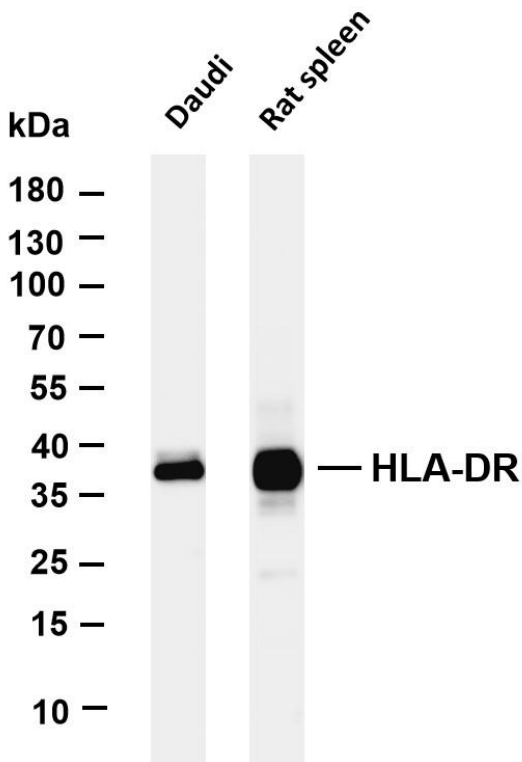
Avoid repeated freezing and thawing!

## Usage suggestions

This product can be used in immunological reaction related experiments. For more information, please consult technical personnel.



Human tonsil was stained with anti-HLA-DR rabbit antibody



Various whole cell lysates were separated by 4-20% SDS-PAGE, and the membrane was blotted with anti-HLA-DR antibody. The HRP-conjugated Goat anti-Rabbit IgG(H + L) antibody was used to detect the antibody. Lane 1: Daudi Lane 2: Rat spleen Predicted band size: 29kDa Observed band size: 37kDa

## 杭州臻优品生物科技有限公司

### 热销产品:

蛋白、一抗、抗体对、ELISA试剂盒、生化试剂盒  
CCK8试剂盒、QPCR检测试剂盒

### 检测服务:

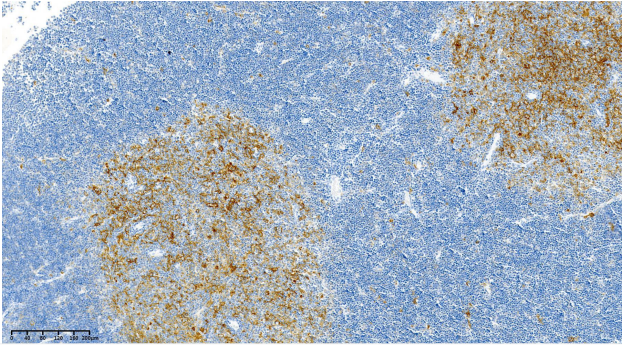
ELISA检测及定制服务 | 生化检测 | PCR、QPCR检测 | WB检测  
ICO-IP检测 | 切片 | 染色 | 免疫组化 | 免疫荧光 | 透射电镜全套  
| 宏基因组、转录组、基因组、蛋白组、代谢组测序



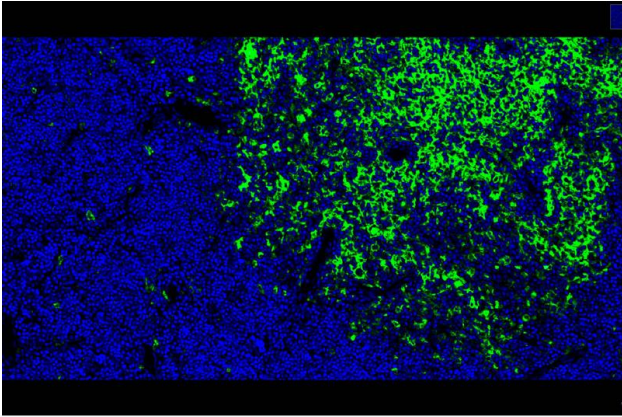
关注官网



关注客服



Rat thymus was stained with anti-HLA-DR Rabbit antibody



Rat thymus was stained with anti-HLA-DR Rabbit antibody

## 杭州臻优品生物科技有限公司

### 热销产品:

蛋白、一抗、抗体对、ELISA试剂盒、生化试剂盒  
CCK8试剂盒、QPCR检测试剂盒

### 检测服务:

ELISA检测及定制服务 | 生化检测 | PCR、QPCR检测 | WB检测  
ICO-IP检测 | 切片 | 染色 | 免疫组化 | 免疫荧光 | 透射电镜全套  
| 宏基因组、转录组、基因组、蛋白组、代谢组测序



关注官网



关注客服