



Cytokeratin 7 Rabbit mAb

Catalog No	YP-rAb-17925
Isotype	IgG
Reactivity	Human,Mouse,Rat
Applications	WB,IHC,IF,ELISA
Gene Name	KRT7 SCL
Protein Name	CK 7;CK-7;CK7;Cytokeratin 7;Cytokeratin-7;D15Wsu77e;K2C7;K2C7_HUMAN;K7;Keratin 7;Keratin 7, type II;Keratin type II cytoskeletal 7;Keratin, 55K type II cytoskeletal;Keratin, simple epithelial;Keratin, simple epithelial type I, K7;Keratin, type II cytoskeletal 7;Keratin-7;Krt2-7;KRT7;MGC11625;MGC129731;MGC3625;Sarcolectin;SCL;Type II mesothelial keratin K7;Type-II keratin Kb7
Purification Process	Protein A
Specificity	Endogenous
Formulation	PBS, 50% glycerol, 0.05% Proclin 300, 0.05%BSA
Source	Monoclonal, Rabbit,IgG
Dilution	IHC 1:1000-1:2000; WB 1:1000-1:5000; IF 1:200-1:1000; ELISA 1:5000-1:20000; Note: For IHC, we suggest antigen retrieval with TE buffer pH 9.0
Concentration	0.5 mg/ml
Purity	≥90%
Storage Stability	-15° C to -25° C/1 year(Do not lower than -25° C)
Synonyms	CK 7 ; CK-7 ; CK7 ; Cytokeratin 7 ; Cytokeratin-7 ; D15Wsu77e ; K2C7 ; K2C7_HUMAN ; K7 ; Keratin 7 ; Keratin 7, type II ; Keratin type II cytoskeletal 7 ; Keratin, 55K type II cytoskeletal ; Keratin, simple epithelial ; Keratin, simple epithelial type I, K7 ; Keratin, type II cytoskeletal 7 ; Keratin-7 ; Krt2-7 ; KRT7 ; MGC11625 ; MGC129731 ; MGC3625 ; Sarcolectin ; SCL ; Type II mesothelial keratin K7 ; Type-II keratin Kb7
Observed Band	55kD
Calculated Molecular Weight	51kD
Cell Pathway	Cytoplasm
Tissue Specificity	Pancreas
Function	Blocks interferon-dependent interphase and stimulates DNA synthesis in cells. Involved in the translational regulation of the human papillomavirus type 16 E7





mRNA (HPV16 E7), induction: Up-regulated by retinoic acid, mass spectrometry: PubMed:11840567, miscellaneous: There are two types of cytoskeletal and microfibrillar keratin: I (acidic; 40-55 kDa) and II (neutral to basic; 56-70 kDa), PTM: Arg-20 is dimethylated, probably to asymmetric dimethylarginine, similarity: Belongs to the intermediate filament family, subunit: Heterotetramer of two type I and two type II keratins. Interacts with eukaryotic translation initiator factor 3 (eIF3) subunit EIF3S10 and with HPV16 E7, tissue specificity: Expressed in cultured epidermal, bronchial and mesothelial cells but absent in colon, ectocervix and liver. Observed throughout the glandular cells in the junction between stomach and esophagus but is absent in the esophagus.

Background

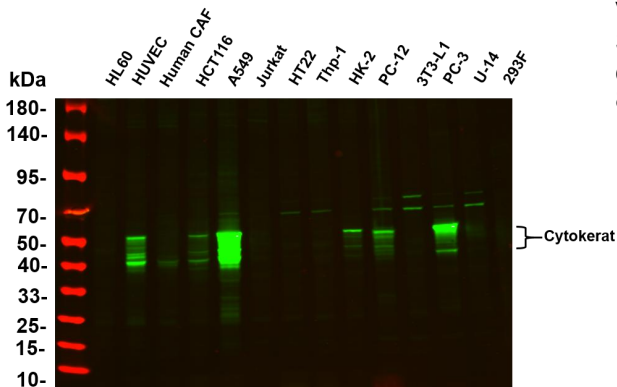
keratin 7(KRT7) Homo sapiens The protein encoded by this gene is a member of the keratin gene family. The type II cytokeratins consist of basic or neutral proteins which are arranged in pairs of heterotypic keratin chains coexpressed during differentiation of simple and stratified epithelial tissues. This type II cytokeratin is specifically expressed in the simple epithelia lining the cavities of the internal organs and in the gland ducts and blood vessels. The genes encoding the type II cytokeratins are clustered in a region of chromosome 12q12-q13. Alternative splicing may result in several transcript variants; however, not all variants have been fully described. [provided by RefSeq, Jul 2008],

matters needing attention

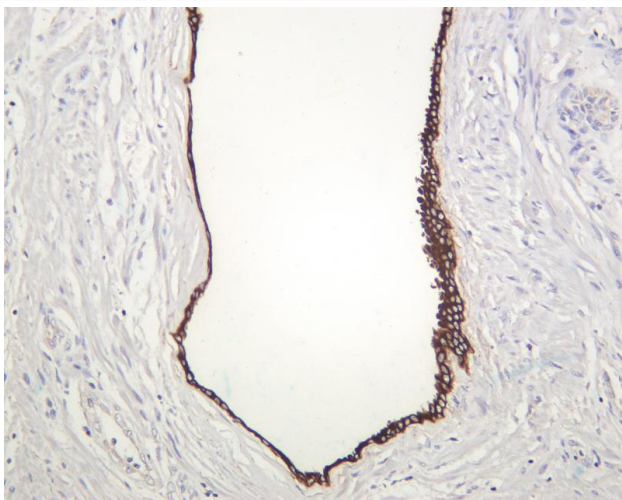
Avoid repeated freezing and thawing!

Usage suggestions

This product can be used in immunological reaction related experiments. For more information, please consult technical personnel.

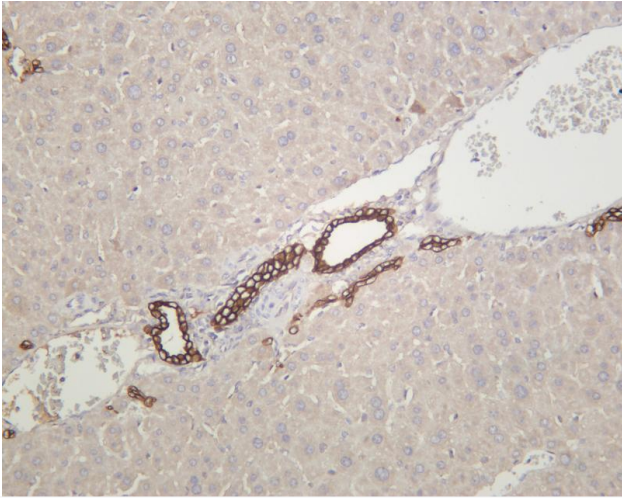


Various whole cell lysates were separated by 4-20% SDS-PAGE, and the primary antibody was used at 4°C, over night with a 1:2500 dilution. The Dylight 800-conjugated Goat anti-Rabbit antibody

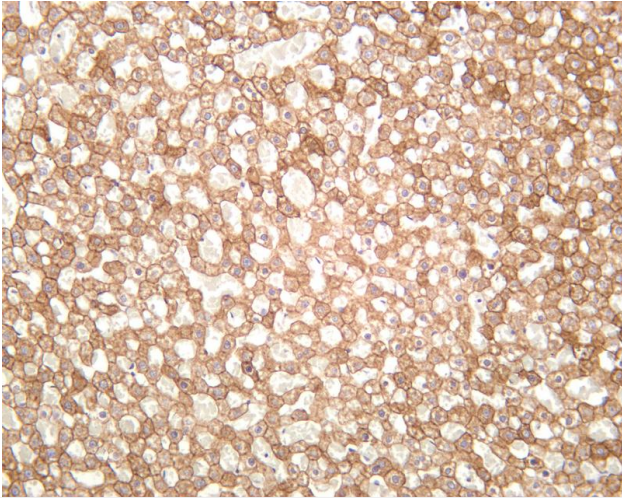


Human prostate was stained with anti-Cytokeratin 7 rabbit antibody

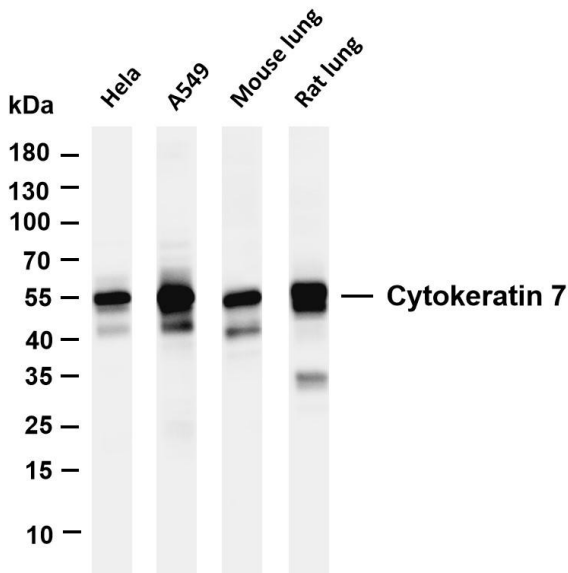




Mouse liver was stained with anti-Cytokeratin 7 rabbit antibody



Rat liver was stained with anti-Cytokeratin 7 rabbit antibody



Various whole cell lysates were separated by 4-20% SDS-PAGE, and the membrane was blotted with anti-Cytokeratin 7 antibody. The HRP-conjugated Goat anti-Rabbit IgG(H + L) antibody was used to detect the antibody. Lane 1: HeLa Lane 2: A549 Lane 3: Mouse lung Lane 4: Rat lung Predicted band size: 51kDa Observed band size: 55kDa

