



# HP1 $\alpha$ Rabbit mAb

<b>Catalog No</b>	YP-rAb-17923
<b>Isotype</b>	IgG
<b>Reactivity</b>	Human,Mouse,Rat
<b>Applications</b>	WB,IHC,IF,IP,ELISA
<b>Gene Name</b>	CBX5 HP1A
<b>Protein Name</b>	Chromobox protein homolog 5 (Antigen p25) (Heterochromatin protein 1 homolog alpha) (HP1 alpha)
<b>Purification Process</b>	Protein A
<b>Specificity</b>	Endogenous
<b>Formulation</b>	PBS, 50% glycerol, 0.05% Proclin 300, 0.05%BSA
<b>Source</b>	Monoclonal, Rabbit,IgG
<b>Dilution</b>	IHC 1:400-1:2000; WB 1:1000-1:5000; IF 1:200-1:1000; ELISA 1:5000-1:20000; IP 1:50-1:200, Note: For IHC, we suggest antigen retrieval with TE buffer pH 9.0
<b>Concentration</b>	0.5 mg/ml
<b>Purity</b>	$\geq 90\%$
<b>Storage Stability</b>	$-15^{\circ}\text{C}$ to $-25^{\circ}\text{C}$ /1 year(Do not lower than $-25^{\circ}\text{C}$ )
<b>Synonyms</b>	CBX5 ; HP1A ; Chromobox protein homolog 5 ; Antigen p25 ; Heterochromatin protein 1 homolog alpha ; HP1 alpha
<b>Observed Band</b>	22kD
<b>Calculated Molecular Weight</b>	22kD
<b>Cell Pathway</b>	Nucleus
<b>Tissue Specificity</b>	Epithelium,Fetal brain cortex,Placenta,
<b>Function</b>	Component of heterochromatin. Recognizes and binds histone H3 tails methylated at 'Lys-9', leading to epigenetic repression. Can interact with lamin B receptor (LBR). This interaction can contribute to the association of the heterochromatin with the inner nuclear membrane. Involved in the formation of functional kinetochore through interaction with MIS12 complex proteins.,PTM:Phosphorylation of HP1 and LBR may be responsible for some of the alterations in chromatin organization and nuclear structure which occur at various times during the cell cycle (By similarity). Phosphorylated during interphase and possibly hyper-phosphorylated during mitosis.,similarity:Contains 2 chromo domains.,subcellular location:Component of centromeric and pericentromeric heterochromatin. Associates with chromosomes during mitosis. Associates specifically with chromatin during metaphase and

杭州臻优品生物科技有限公司

热销产品:

蛋白、一抗、抗体对、ELISA试剂盒、生化试剂盒  
CCK8试剂盒、QPCR检测试剂盒

检测服务:

ELISA检测及定制服务 | 生化检测 | PCR、QPCR检测 | WB检测  
ICO-IP检测 | 切片 | 染色 | 免疫组化 | 免疫荧光 | 透射电镜全套  
| 宏基因组、转录组、基因组、蛋白组、代谢组测序



关注官网



关注客服



anaphase.,subunit:Interacts with SUV420H1 and SUV420H2 (By similarity). Interacts directly with ATRX, CHAF1A, LBR, NIPBL, SP100, STAM2 and TRIM28 via the chromoshadow domain. Can interact directly with CBX3 via the chromoshadow domain. Interacts with histone H3 methylated at 'Lys-9'. Interacts with MIS12 and C20orf127. Interacts with HP1BP3.,

### Background

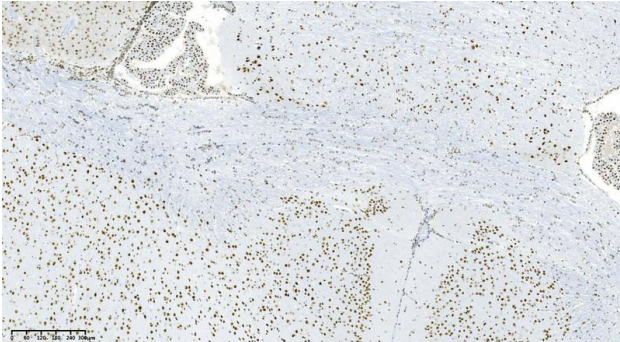
This gene encodes a highly conserved nonhistone protein, which is a member of the heterochromatin protein family. The protein is enriched in the heterochromatin and associated with centromeres. The protein has a single N-terminal chromodomain which can bind to histone proteins via methylated lysine residues, and a C-terminal chromo shadow-domain (CSD) which is responsible for the homodimerization and interaction with a number of chromatin-associated nonhistone proteins. The encoded product is involved in the formation of functional kinetochore through interaction with essential kinetochore proteins. The gene has a pseudogene located on chromosome 3. Multiple alternatively spliced variants, encoding the same protein, have been identified. [provided by RefSeq, Jul 2008],

### matters needing attention

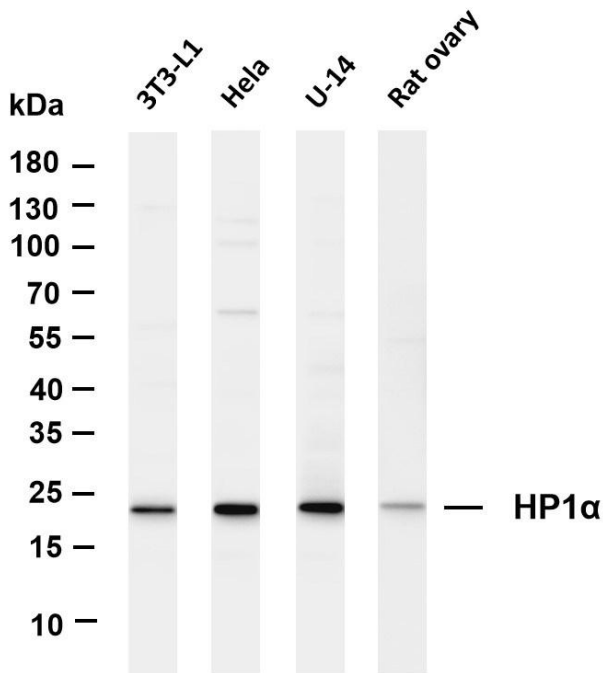
Avoid repeated freezing and thawing!

### Usage suggestions

This product can be used in immunological reaction related experiments. For more information, please consult technical personnel.

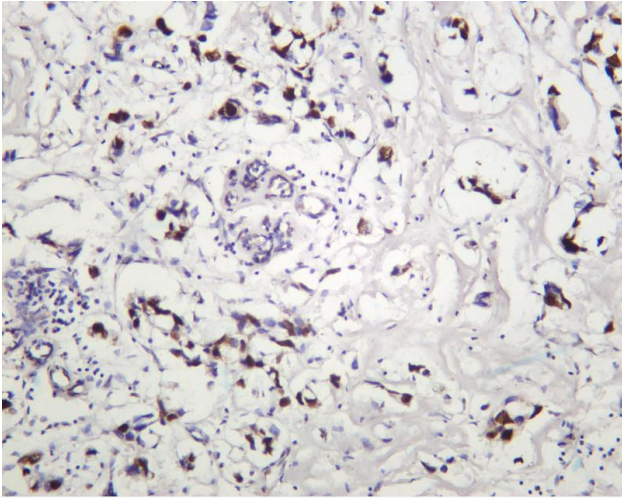


Mouse brain was stained with anti-HP1 $\alpha$  Rabbit antibody

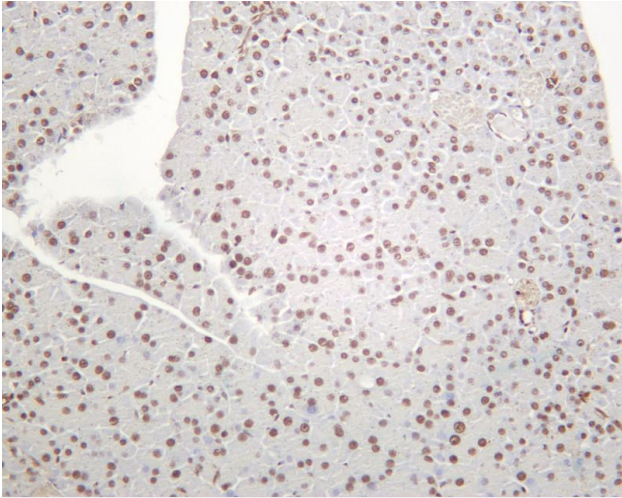


Various whole cell lysates were separated by 4-20% SDS-PAGE, and the membrane was blotted with anti-HP1 $\alpha$  antibody. The HRP-conjugated Goat anti-Rabbit IgG(H + L) antibody was used to detect the antibody. Lane 1: 3T3-L1 Lane 2: HeLa Lane 3: U-14 Lane 4: Rat ovary  
Predicted band size: 22kDa Observed band size: 22kDa

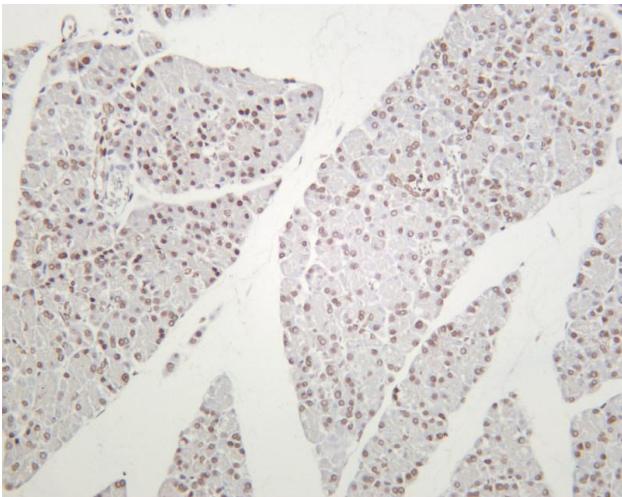




Human breast carcinoma was stained with anti-HP1  $\alpha$  rabbit antibody



Mouse pancreas was stained with anti-HP1  $\alpha$  rabbit antibody



Rat pancreas was stained with anti-HP1  $\alpha$  rabbit antibody

